



THE
Orchid

COLLECTION 2023

By RENÉ OF PARIS™

New Blooms for a



Niki

Jodie

New Year

Get ready to experience beauty like never before with our stunning new 2023 Orchid Collection!

With 5 stylish options (Marion, Jodie, Jan, Niki, and Kirby), you can always find a sensational style no matter what your mood might be.

Be bold one day; be subtle another; change things up as often as you like – we've got everything covered with this remarkable collection.

Join us on this journey now and discover just how amazing beauty can truly be!



Jan



Kirby



Marion

THE Orchid

COLLECTION 2023

By RENÉ of PARIS™

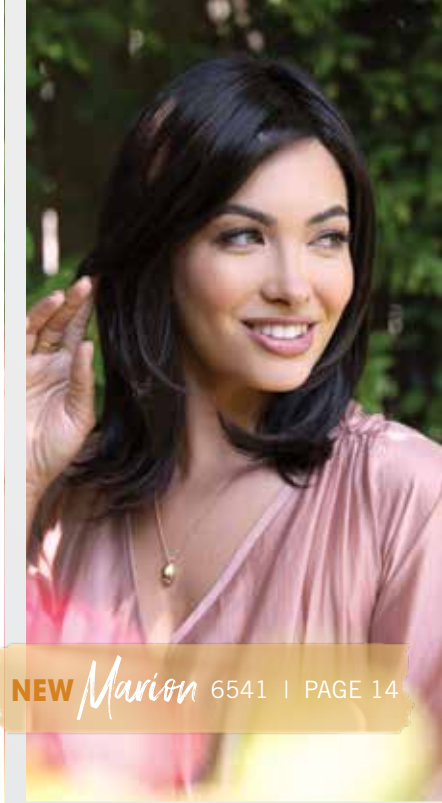
Main: Jodie in Chocolate Pretzel | Top inset: Jan in Caffè Macchiato
Bottom insets, left to right: Niki in Salt & Pepper, Marion in Champagne Blush, Kirby in Frozen Mulberry



NEW *Jan* 6539 | PAGE 8



NEW *Kirby* 4114 | PAGE 12



NEW *Marion* 6541 | PAGE 14



NEW *Jodie* 6540 | PAGE 10



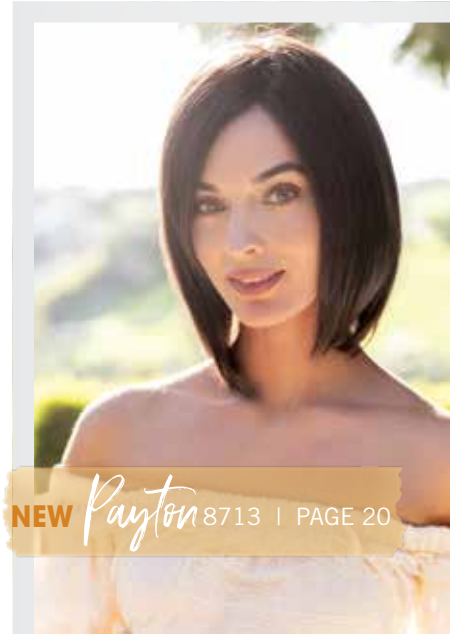
NEW *Niki* 6542 | PAGE 16



NEW *Alina* 8712 | PAGE 18



NEW *Olivia* 8714 | PAGE 19

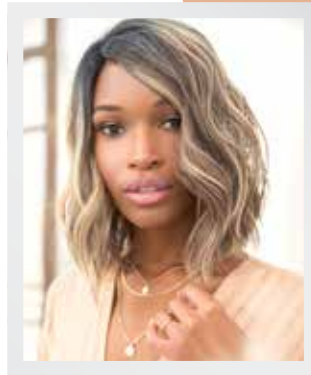


NEW *Payton* 8713 | PAGE 20

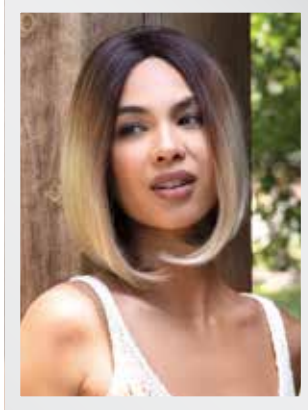
TABLE OF Contents

High Heat Styles

- 21 ATTITUDE 4107
- 22 DESTINY 4112
- 23 DIVA 4104
- 23 ENVIOUS 4109
- 24 FLAWLESS 4108
- 24 POSH 4110
- 25 SASSY 4111
- 26 SEDUCTION 4106
- 27 SPELLBOUND 4102



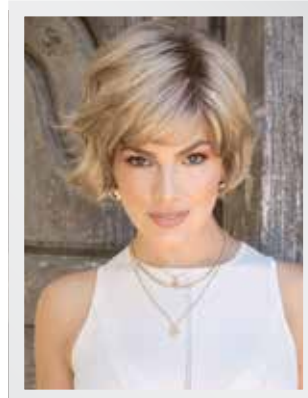
ENVIOUS 4109 | PAGE 23



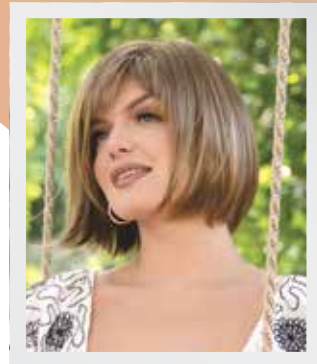
POSH 4110 | PAGE 24



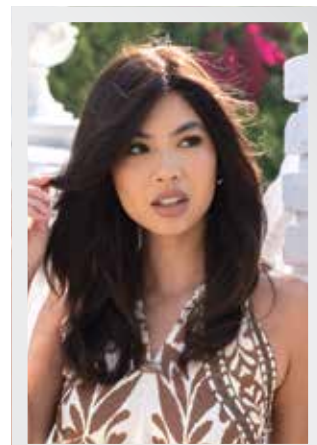
SEDUCTION 4106 | PAGE 26



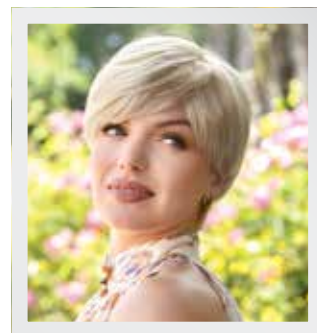
BRITT 6535 | PAGE 29



SCORPIO 5020 | PAGE 37



DISCREET TOPPER 8703 | PAGE 39



KRIS 8704 | PAGE 40



LILY 8705 | PAGE 40

Synthetic Styles

- 28 ADELLE 5021
- 29 BRITT 6535
- 30 CARTER 6528
- 31 ELLA 6537
- 32 ENSLEY 6531
- 32 ENSLEY TP 6534
- 33 HALLIE 6536
- 33 JUNE 6533
- 34 LIANA 6538
- 35 LACEY 5023
- 36 PETITE PORTIA 5022
- 36 SERENA 5025
- 37 SCORPIO 5020
- 37 SCORPIO PM 5024
- 38 SYDNEY 5026
- 38 VALENTINA 5027

Human Hair Styles

- 39 DISCREET TOPPER 8703
- 40 KRIS 8704
- 40 LILY 8705
- 41 ORCHID HH TP 9" 4113

42 Accessories

High Heat

Synthetic

BRUNETTES



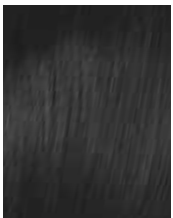
Cafe Ole



Hot Chocolate



Molten Amber



Nocturnal



Sepia

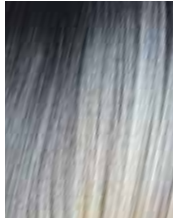


Marble Brown

BLONDS



Blonde Ambition



Crème de Coco



Cream Velvet



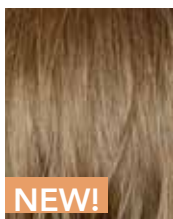
Sunkiss



Creamy Toffee



Mocha Truffle



NEW!

Caramel Biscotti

GRAYS

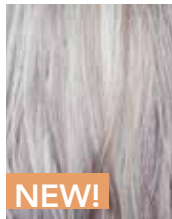


Canyon Stone



Silver Mist

VIBRANT COLORS



NEW!

Frozen Mulberry



Midnight Iris



Plum Dandy



Aqua Paradise

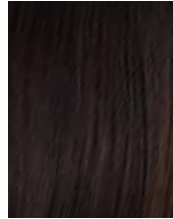


Royal Emerald

BRUNETTES



Chestnut



Coffee Bean



Pecan

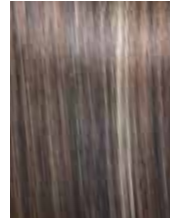


Walnut

TRANSITION COLORS



Java Blast



Chocolate Swirl



Fudge Ripple

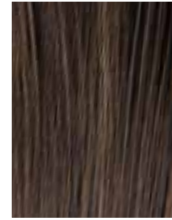


Sepia



Toasted Shine

HYBRANT BRUNETTES



Brown Sugar



Chocolate Frost-R



Chocolate Pretzel

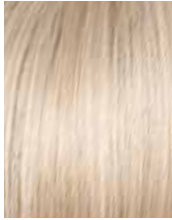


Coffee Latte-R



Marble Brown-R

BLONDS



Creamy Blond



Buttered Toast



Honey Wheat



Pralines & Cream



Sunny Spice



Champagne Blush

AVAILABLE *Colors*

HYBRANT BLONDS



Frosti Blond



Caffe Macchiato



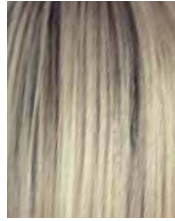
Creamy Dolce



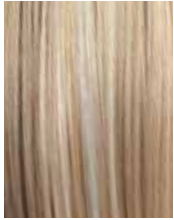
Mochaccino



Coco Cream



Crème Brulee



Sugar Cookie



Creamy Toffee-R



Peanutbutter Swirl



Satin Pearl



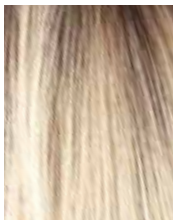
Nutmeg-F



Sandy Mink

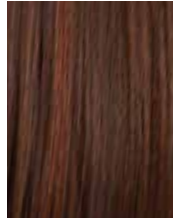


Shadowed Custard

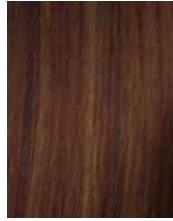


Champagne-R

REDS



Cherry Cola



Cinnamon Swirl



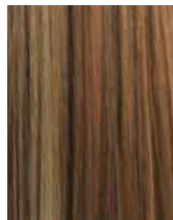
Cherry Merlot



Tomato Bisque

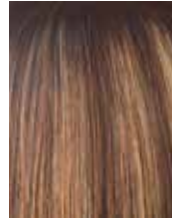


Rum Raisin

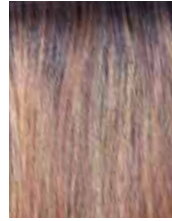


Ginger Snap

HYBRANT REDS



Auburn Sugar-R



Shaded Amber

GRAYS

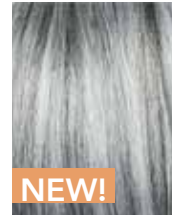


Sandy Silver



Silver Frost

HYBRANT GRAYS



Salt & Pepper



Illumina-R



Moonstone

BRUNETTES



Brown Spice



Cappuccino



Coffee Noir



Dark Chocolate



Honey Brown



Almond Toast

BLONDS



Golden Wheat



Marigold



Sunlit Sand

HYBRANT BLONDS



Moonlight Blonde Root

JAN

6539

COLORS SHOWN:
Caffe Macchiato (main, left insets)
Cherry Cola (right insets)

Cap: Machine Made
Fringe: 4.5" (11.5 cm)
Crown: 8.5" (21.5 cm)
Nape: 9" (22.8 cm)
Weight: 3.6 oz (102 g)

BRUNETTES:
Coffee Bean
Pecan
Walnut

HYBRANT BRUNETTES:
Chocolate Pretzel

BLONDS:
Champagne Blush

HYBRANT BLONDS:
Caffe Macchiato
Creamy Dolce
Crème Brulee
Peanutbutter Swirl
Sandy Mink
Shadowed Custard

REDS:
Cherry Cola

GRAYS:
Silver Frost

HYBRANT GRAYS:
Moonstone
Salt & Pepper **NEW!**

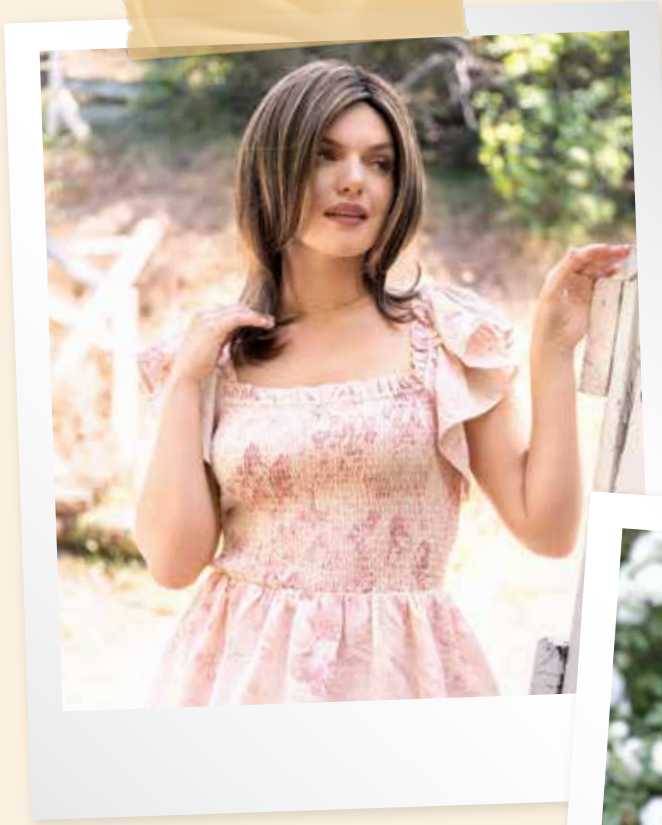




NEW | SYNTHETIC
9

NEW | SYNTHETIC

10





NEW | SYNTHETIC

JODIE

6540

COLORS SHOWN:
Chocolate Pretzel (top inset)
Salt & Pepper (bottom insets) **NEW!**
Peanutbutter Swirl (main)

Cap: Lace Front
Fringe: 9.5" (24 cm)
Crown: 8" (20.3 cm)
Nape: 10" (25.4 cm)
Weight: 3.6 oz (102 g)

BRUNETTES:
Coffee Bean
Pecan
Walnut

HYBRANT BRUNETTES:
Chocolate Pretzel

BLONDS:
Champagne Blush

HYBRANT BLONDS:
Caffe Macchiato
Creamy Dolce
Crème Brulee
Peanutbutter Swirl
Sandy Mink
Shadowed Custard

REDS:
Cherry Cola

GRAYS:
Silver Frost

HYBRANT GRAYS:
Moonstone
Salt & Pepper **NEW!**





KIRBY

4114

HIGH HEAT

COLORS SHOWN:
Frozen Mulberry (left) **NEW!**
Marble Brown (right)

Cap: Lace Front / Lace Part /
Soft Net

Fringe: 7.5" (19 cm)
Crown: 15" (38.1 cm)
Nape: 11" (28 cm)
Weight: 5.92 oz (168 g)

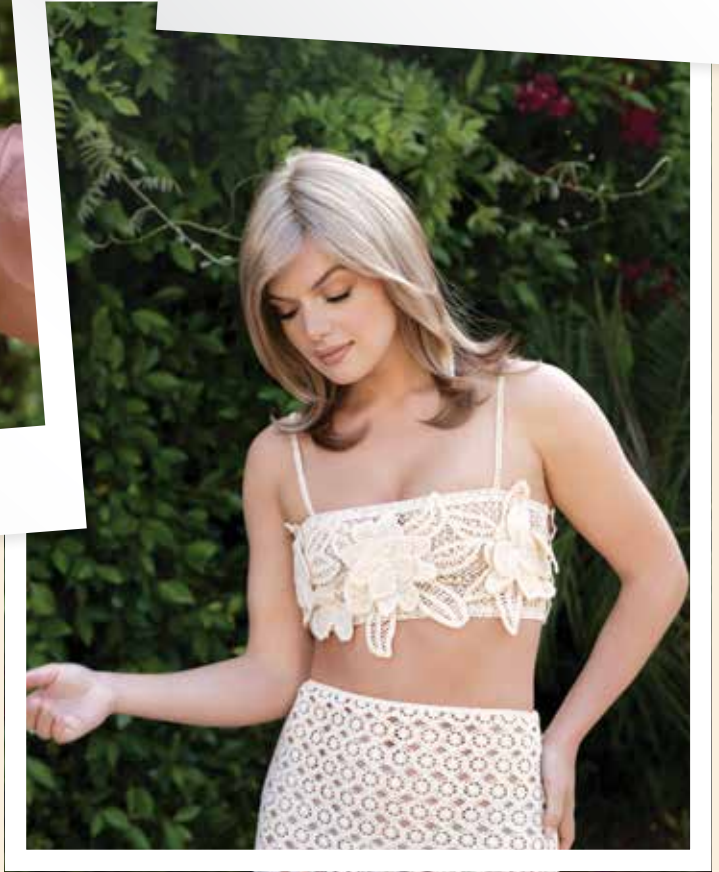
BRUNETTES:
Hot Chocolate
Marble Brown
Molten Amber
Nocturnal

BLONDS:
Caramel Biscotti **NEW!**
Cream Velvet
Creamy Toffee
Creme de Coco
Mocha Truffle

GRAYS:
Canyon Stone
Silver Mist

VIBRANT COLORS
Frozen Mulberry **NEW!**







MARION

6541

COLORS SHOWN:
Champagne Blush (main,
bottom right inset)
Salt & Pepper (top insets) **NEW!**
Coffee Bean (bottom left inset)

Cap: Partial Lace Front / Lace Part
Fringe: 4.5" (11.5 cm)
Crown: 11" (28 cm)
Nape: 10.5" (26.6 cm)
Weight: 4.69 oz (133 g)

BRUNETTES:
Coffee Bean
Pecan
Walnut

HYBRANT BRUNETTES:
Chocolate Pretzel

BLONDS:
Champagne Blush

HYBRANT BLONDS
Caffe Macchiato
Creamy Dolce
Crème Brulee
Peanutbutter Swirl
Sandy Mink
Shadowed Custard

REDS:
Cherry Cola

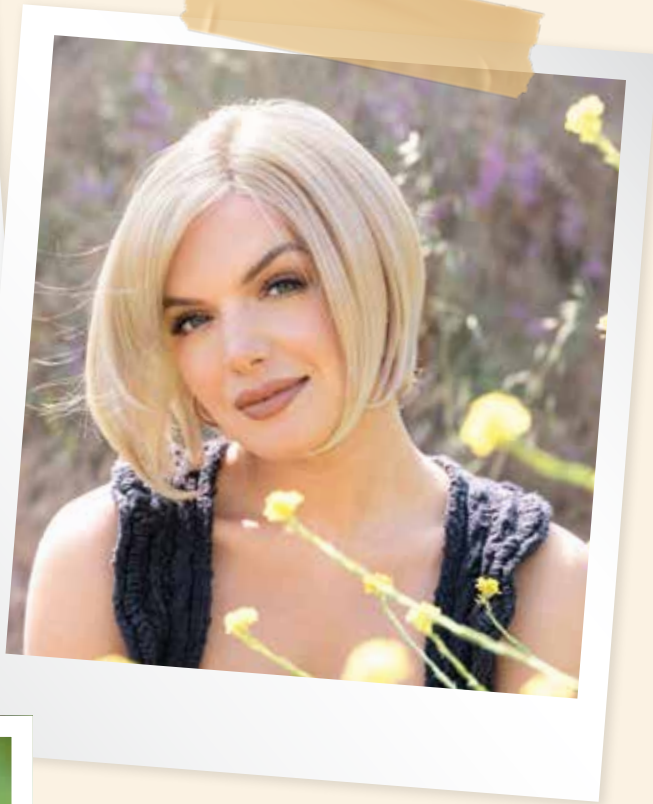
GRAYS:
Silver Frost

HYBRANT GRAYS:
Moonstone
Salt & Pepper **NEW!**

NEW | SYNTHETIC

16





NIKI

6542

COLORS SHOWN:
Creamy Toffee (main)
Salt & Pepper (left insets) **NEW!**
Creamy Blond (right insets)

Cap: Lace Front / Lace Part
Fringe: 4.5" (11.5 cm)
Crown: 8" (20.3 cm)
Nape: 2.5" (6.3 cm)
Weight: 3.1 oz (90 g)

BRUNETTES:
Coffee Latte
Dark Chocolate
Ginger Brown
Marble Brown

HYBRANT BRUNETTES:
Chocolate Frost-R

BLONDS:
Creamy Blond
Creamy Toffee

HYBRANT BLONDS:
Champagne-R

HYBRANT REDS:
Auburn Sugar-R
Razberry Ice-R

GRAYS:
Silver Stone

HYBRANT GRAYS:
Moonstone
Salt & Pepper **NEW!**



ALINA

8712

This bob style is incredibly versatile and frames the face beautifully.

COLOR SHOWN:
Sunlit Sand

Cap: Ear to ear lace front, PU patches ear tabs, monofilament top, fully hand-tied in softnet back
Fringe: 8" (20.3cm)
Crown: 8" (20.3cm)
Nape: 3" (7.6cm)
Weight: 3.68oz (95.5g)

BRUNETTES:
Almond Toast
Coffee Noir
Cappuccino

BLONDS:
Marigold
Sunlit Sand



OLIVIA

8714

Timeless style that offers a balance between sophistication and ease.

COLOR SHOWN:
Coffee Noir

Cap: Lace front, monofilament top,
machine wefted softnet back
Weight: 6.3oz (179g)
Fringe: 7" (17.7cm)
Crown: 10" (25.4cm)
Nape: 12.5" (31.7cm)

BRUNETTES:
Almond Toast
Coffee Noir
Cappuccino

BLONDS:
Marigold
Sunlit Sand



PAYTON

8713

Flowing locks that extend past the shoulders, provides a glamorous and natural look

COLOR SHOWN:
Cappuccino

Cap: Lace front, monofilament top, silicon strips, machine wefted softnet back
Weight: 4.9oz (138g)
Fringe: 6" (15.2cm)
Crown: 10" (25.4cm)
Nape: 5" (12.7cm)

BRUNETTES:
Almond Toast
Coffee Noir
Cappuccino

BLONDS:
Marigold
Sunlit Sand



ATTITUDE

4107

This mid-length style with loose wavy curls will definitely give your attitude a boost of confidence.

COLOR SHOWN:
Hot Chocolate

Cap: Lace Front
Fringe: 7.5" (19.05 cm)
Crown: 6" - 7.75" (15.24 cm - 19.68 cm)
Nape: 6" (15.24 cm)
Weight: 4.67 oz (132.5 g)

BRUNETTES:
Cafe Ole
Hot Chocolate
Molten Amber
Nocturnal
Sepia

BLONDS:
Blonde Ambition
Crème de Coco
Sunkiss

GRAYS:
Silver Mist

VIBRANT COLORS:
Midnight Iris
Plum Dandy
Royal Emerald





COLOR SHOWN:
Canyon Stone (main)
Mocha Truffle (inset)

Cap: Lace Front / Lace Part
Fringe: 3.5 - 4.5" (8.8cm - 11.4 cm)
Crown: 3.5 - 4.5" (8.8cm - 11.4 cm)
Nape: 1.75" (4.4 cm)
Weight: 2.53 oz (71.5 g)

BRUNETTES:
Hot Chocolate
Marble Brown
Molten Amber
Nocturnal

BLONDS:
Mocha Truffle
Cream Velvet
Creme de Coco
Creamy Toffee

GRAYS:
Canyon Stone
Silver Mist

DESTINY

4112

A gorgeous short crop with longer side fringe makes Destiny highly versatile to be worn many ways. The defined shape is beautifully cut to showcase your best features.





DIVA

4104

Make a statement in this sexy mane of tight, touchable ringlets that fall shoulder length. Featuring a lace front!

COLOR SHOWN:
Crème de Coco

Cap: Lace Front
Fringe: 16-17" (40.64 cm - 43.18 cm)
Crown: 17" (43.18 cm)
Nape: 14-15.5" (35.56 cm - 39.37 cm)
Weight: 7.69 oz (218 g)

BRUNETTES:
Cafe Ole
Hot Chocolate
Molten Amber
Nocturnal

BLONDES:
Blonde Ambition
Crème de Coco
Sunkiss

VIBRANT COLORS:
Midnight Iris
Plum Dandy



ENVIIOUS

4109

Effortless beach waves in an instant will surely make everyone ENVIIOUS.

COLOR SHOWN:
Blonde Ambition

Cap: Lace Front / U-Part
Fringe: 12" (30.48 cm)
Crown: 6" - 8.5" (15.24 cm - 21.59 cm)
Nape: 6" (15.24 cm)
Weight: 4.03 oz (114.5 g)

BRUNETTES:
Cafe Ole
Hot Chocolate
Molten Amber
Nocturnal
Sepia

GRAYS:
Silver Mist

BLONDES:
Blonde Ambition
Crème de Coco
Sunkiss

VIBRANT COLORS:
Midnight Iris
Plum Dandy
Royal Emerald



FLAWLESS

4108

This sleek cut will transform your everyday look to a fashion forward style that will make heads turn.

COLOR SHOWN:
Royal Emerald

Cap: Lace Front / U-Part
Fringe: 10" - 12" (25.4 cm - 30.48 cm)
Crown: 7.5" - 11" (19.05 cm - 27.94 cm)
Nape: 6.5" (16.51 cm)
Weight: 4.63 oz (131.5 g)

BRUNETTES:
Cafe Ole
Hot Chocolate
Molten Amber
Nocturnal
Sepia

BLONDS:
Blonde Ambition
Crème de Coco
Sunkiss

GRAYS:
Silver Mist

VIBRANT COLORS:
Midnight Iris
Plum Dandy
Royal Emerald



POSH

4110

This classic Heat Friendly bob will create a trendy and sophisticated look.

COLOR SHOWN:
Blonde Ambition

Cap: Lace Front / Lace Part
Fringe: 11" (27.94 cm)
Crown: 11.5" (29.21 cm)
Nape: 4" (10.16 cm)
Weight: 4.4 oz (125 g)

BRUNETTES:
Cafe Ole
Molten Amber

BLONDS:
Blonde Ambition
Crème de Coco
Sunkiss

GRAYS:
Silver Mist

VIBRANT COLORS:
Aqua Paradise
Plum Dandy



COLOR SHOWN:
 Plum Dandy (Left)
 Cream Velvet (Right)

Cap: Machine Made
 Fringe: 7" (17.78 cm)
 Crown: 9" (22.86 cm)
 Back: 8" (20.32 cm)
 Weight: 4.58 oz (130 g)

BRUNETTES:
 Cafe Ole
 Hot Chocolate
 Molten Amber

BLONDS:
 Crème de Coco
 Cream Velvet
 Sunkiss

GRAYS:
 Canyon Stone
 Silver Mist

VIBRANT COLORS:
 Plum Dandy

SASSY

4111

This simple yet sophisticated mid length bob has soft layers that give it movement to enable you to wear it in multiple ways. It can be worn casual or dressed up.



SEDUCTION

4106

Curvaceous loose curls that fall mid-back will surely turn heads. Featuring crown skin top cap.

COLOR SHOWN:
Molten Amber

Cap: Skin Crown Cap
Fringe: 3.5" (8.89 cm)
Crown: 15" (38.1 cm)
Nape: 16" - 18" (40.64 cm - 45.72 cm)
Weight: 2.47 oz (70 g)

BRUNETTES:
Cafe Ole
Hot Chocolate
Molten Amber
Nocturnal
Sepia

BLONDS:
Blonde Ambition
Crème de Coco
Sunkiss

VIBRANT COLORS:
Midnight Iris
Plum Dandy



SPELLBOUND

4102

Long, flowing layers and heavy fringe frame the face of this captivating style.

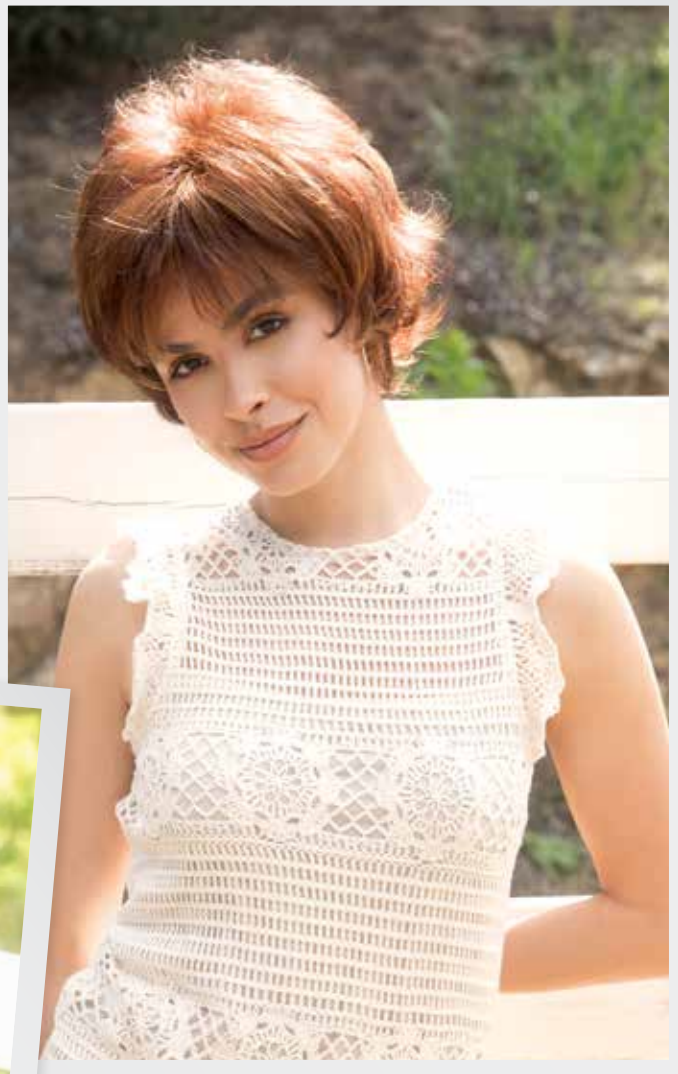
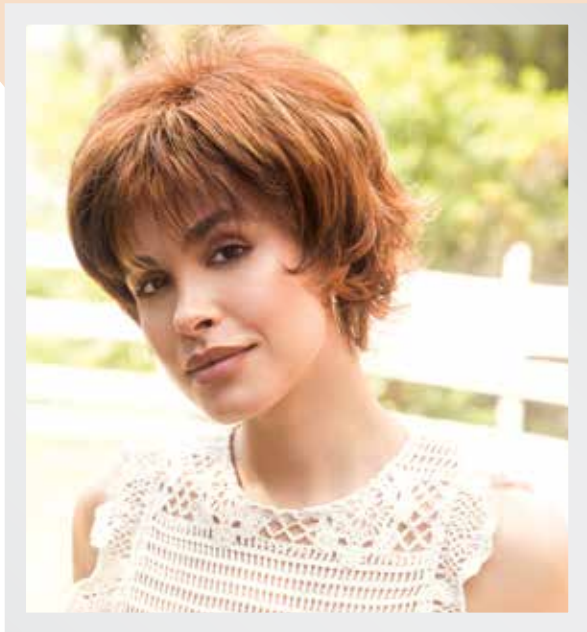
COLOR SHOWN:
Blonde Ambition

Cap: Machine Made
Fringe: 3.5" (8.89 cm)
Crown: 9.5" (24.13 cm)
Nape: 12" (30.48 cm)
Weight: 6.84 oz (194 g)

BRUNETTES:
Cafe Ole
Hot Chocolate
Molten Amber
Nocturnal

BLONDS:
Blonde Ambition
Crème de Coco
Sunkiss

VIBRANT COLORS:
Midnight Iris
Plum Dandy



ADELLE

5021

This shake-and-go style features razored edges creating a modern, trendy look.

COLOR SHOWN:
Tomato Bisque

Cap: Machine Made
Fringe: 4.25" (10.8 cm)
Crown: 4.25" (10.8 cm)
Nape: 3.5" (9 cm)
Weight: 2.6 oz (73 g)

BRUNETTES:

Pecan
Chocolate Swirl
Chestnut
Coffee Bean
Pecan
Walnut

HYBRANT BRUNETTES:

Chocolate Frost-R
Coffee Latte-R
Marble Brown-R

BLONDS:

Buttered Toast
Creamy Blond
Honey Wheat
Mochaccino
Pralines & Cream

HYBRANT BLONDS:

Champagne-R
Coco Cream
Creamy Toffee-R
Nutmeg-F

GRAYS:

Sandy Silver

HYBRANT GRAYS:

Illumina-R

REDS:

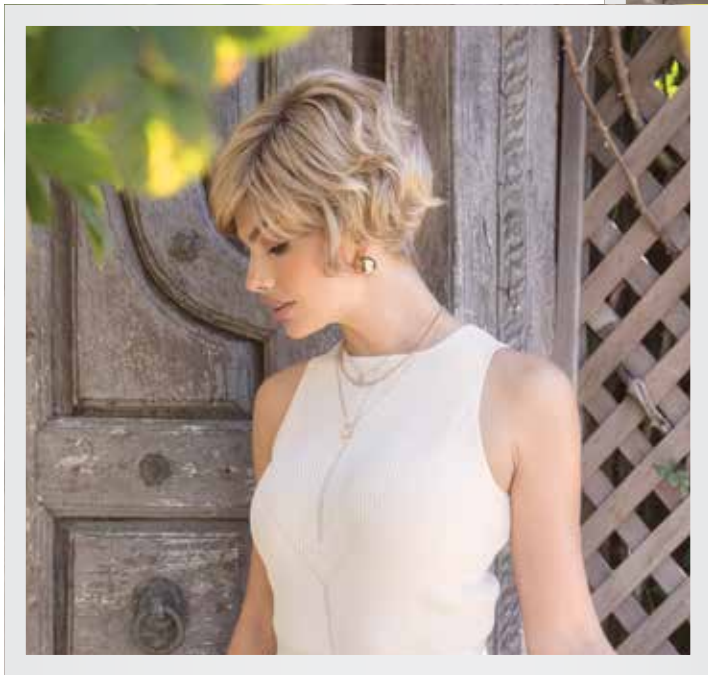
Tomato Bisque
Cinnamon Swirl
Cherry Cola
Rum Raisin

HYBRANT REDS:

Auburn Sugar-R

TRANSITION COLORS:

Toasted Shine



BRITT

6535

This short shag with feathered layers is what you need if you love volume. This style is effortless and so versatile.

COLOR SHOWN:
Sandy Mink

Cap: Machine Made
Fringe: 4.5" (11.43 cm)
Crown: 6.5" (16.5 cm)
Nape: 1.5" (3.81 cm)
Weight: 2.5 oz (73 g)

BRUNETTES:
Coffee Bean
Pecan

HYBRANT BRUNETTES:
Chocolate Pretzel

BLONDS:
Champagne Blush

HYBRANT BLONDS:
Caffe Macchiato
Creamy Dolce
Crème Brulee
Peanutbutter Swirl
Sandy Mink
Shadowed Custard

REDS:
Cherry Cola

GRAYS:
Silver Frost

HYBRANT GRAYS:
Moonstone



CARTER

6528

Lacefront pixie cut with side swept bangs and tapered nape.

COLOR SHOWN:
Walnut

Cap: Lace Front / Lace Part
Fringe: 4.75" (12.06 cm)
Crown: 5" (12.7 cm)
Nape: 1.75" (4.44 cm)
Weight: 1.97 oz (56 g)

BRUNETTES:
Pecan
Walnut

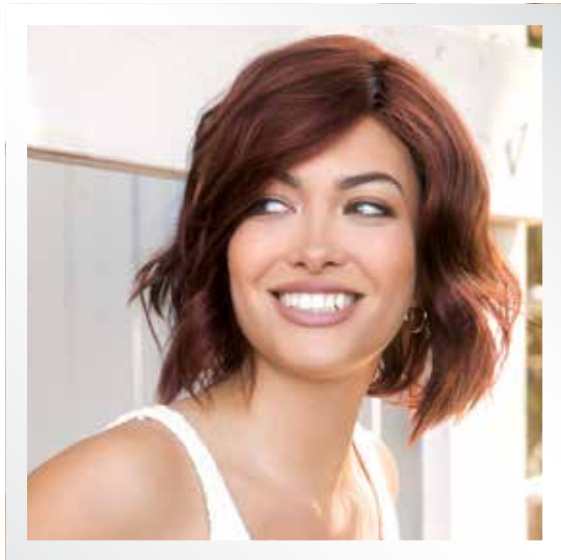
HYBRANT BRUNETTES:
Chocolate Pretzel

HYBRANT BLONDS:
Caffe Macchiato
Creamy Dolce
Peanutbutter Swirl
Shadowed Custard

HYBRANT REDS:
Shaded Amber

GRAYS:
Silver Frost

HYBRANT GRAYS:
Moonstone



ELLA

6537

This beach wave bob is simply breathtaking. The feathered-cut layers shows artistic precision whilst also being playful and fun.

COLOR SHOWN:
Cherry Merlot (top left inset)
Satin Pearl (bottom left inset)
Caffe Macchiato (ight)

Cap: Lace Front / Lace Part
Fringe: 9" (22.8 cm)
Crown: 8" (20.3 cm)
Nape: 3.5" (8.8 cm)
Weight: 3.1 oz (90 g)

BRUNETTES:
Coffee Bean
Walnut

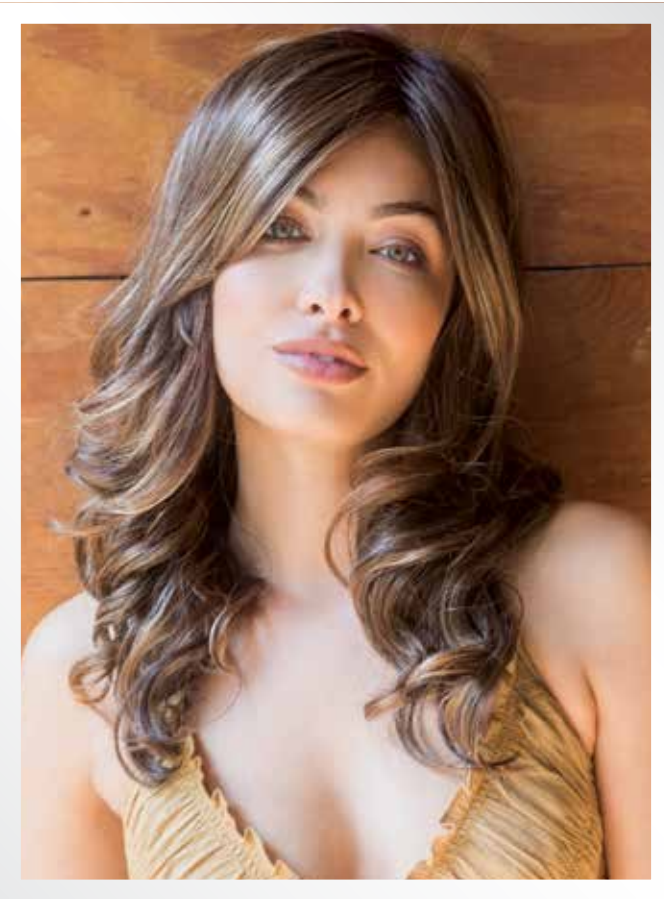
BLENDS:
Satin Pearl

HYBRANT BLONDS:
Caffe Macchiato
Creamy Dolce
Shadowed Custard
Sandy Mink

REDS:
Cherry Merlot

GRAYS:
Silver Frost

HYBRANT GRAYS:
Moonstone



ENSLEY

6531

Salon blow-out inspired style with long side swept bangs and soft curls.

COLOR SHOWN:
Chocolate Pretzel

Cap: Lace Front / Lace Part
Fringe: 6" (15.24 cm)
Crown: 13" (33.02 cm)
Nape: 14" (35.569 cm)
Weight: 5.64 oz (160 g)

BRUNETTES:
Sepia

HYBRANT BRUNETTES:
Brown Sugar
Chocolate Pretzel

HYBRANT BLONDS:
Caffe Macchiato
Creamy Dolce
Peanutbutter Swirl
Shadowed Custard

HYBRANT REDS:
Shaded Amber

GRAYS:
Silver Frost

HYBRANT GRAYS:
Moonstone



ENSLEY TP

6534

This top piece features a beautiful curl pattern and a left part. This will increase volume and will blend naturally with your hair.

COLOR SHOWN:
Walnut

Cap: Lace Front / Lace Part
Fringe: 6.75" (17.14 cm)
Crown: 6.5" (16.5 cm)
Back: 15" (38.1 cm)
Weight: 3.52 oz (100 g)

BRUNETTES:
Coffee Bean
Pecan
Walnut

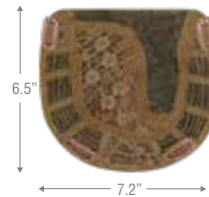
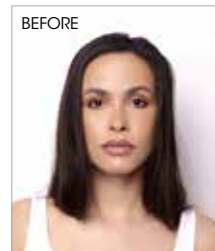
HYBRANT BRUNETTES:
Chocolate Pretzel

BLONDS:
Buttered Toast
Champagne Blush

HYBRANT BLONDS:
Caffe Macchiato
Crème Brulee
Peanutbutter Swirl
Sandy Mink
Shadowed Custard

GRAYS:
Silver Frost

HYBRANT GRAYS:
Moonstone

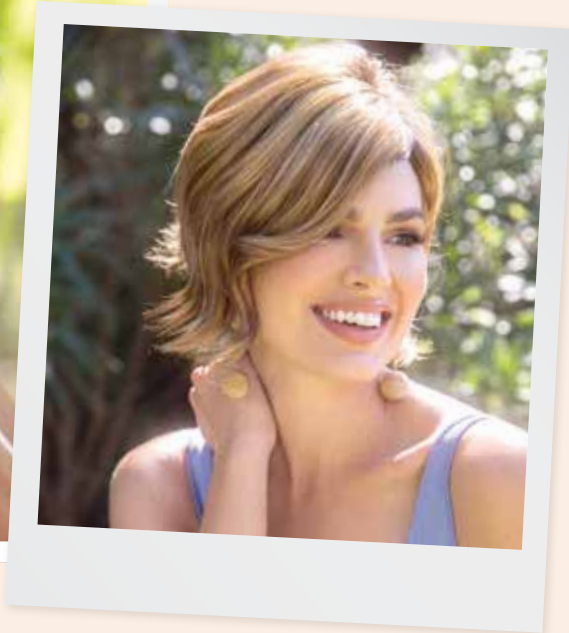




HALLIE

6536

This short wavy bob hairstyle is incredible. The side part with layers that reach the chin line gives this short wavy hair a cool beachy look.



COLOR SHOWN:
Moonstone (Left)
Peanutbutter Swirl (Right)

Cap: Lace Front
Fringe: 9" (22.86 cm)
Crown: 6.5" (16.5 cm)
Nape: 2" (5.08 cm)
Weight: 2.82 oz (80 g)

BRUNETTES:
Coffee Bean
Pecan

HYBRANT BRUNETTES:
Chocolate Pretzel

BLONDS:
Champagne Blush

HYBRANT BLONDS:
Caffe Macchiato
Creamy Dolce
Crème Brulee
Peanutbutter Swirl
Sandy Mink
Shadowed Custard

REDS:
Cherry Cola

GRAYS:
Silver Frost

HYBRANT GRAYS:
Moonstone



JUNE

6533

Short multi-layered style with swept fringe.

COLOR SHOWN:
Sandy Mink

Cap: Machine Made
Fringe: 5.5" (13.9 cm)
Crown: 5.5" (13.9 cm)
Nape: 1.5" (3.8 cm)
Weight: 2.5 oz (72 g)

BRUNETTES:
Pecan

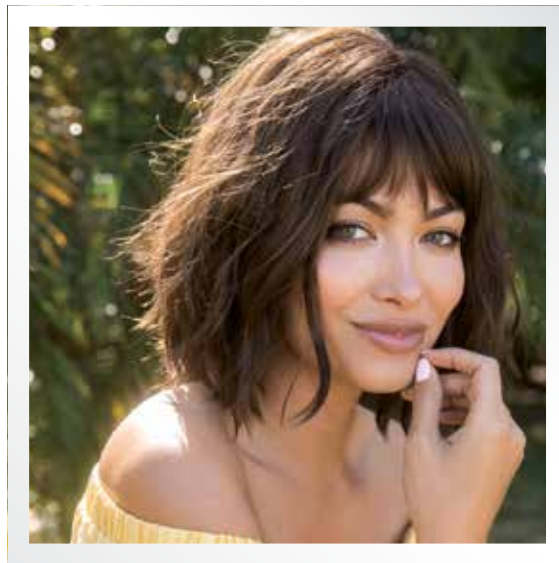
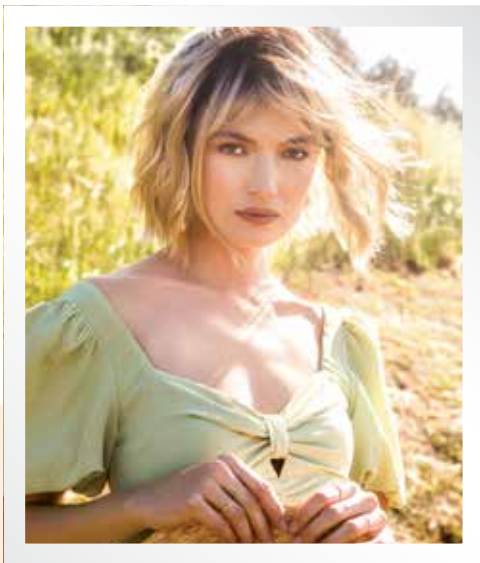
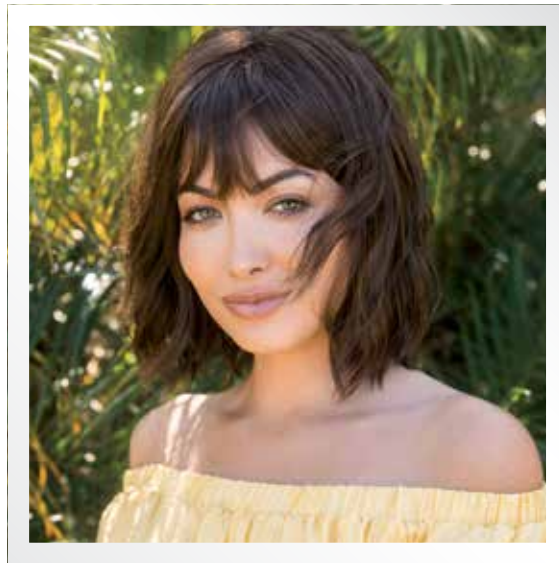
HYBRANT BRUNETTES:
Chocolate Pretzel

BLONDS:
Sandy Mink

HYBRANT BLONDS:
Creamy Dolce
Shadowed Custard

GRAYS:
Silver Frost

HYBRANT GRAYS:
Moonstone



LIANA

6538

A stunning bob with bangs and soft, shattered waves. This salon-inspired style with a sleek full fringe is both bold and beautiful.

COLOR SHOWN:
 Cherry Merlot (top left inset)
 Shadowed Custard (bottom left inset)
 Walnut (right insets)

Cap: Machine Made
 Fringe: 3.5" (8.8 cm)
 Crown: 11" (27.9 cm)
 Nape: 6" (15.2 cm)
 Weight: 3.4 oz (98 g)

BRUNETTES:
 Coffee Bean
 Walnut

BLONDS:
 Satin Pearl

HYBRANT BLONDS:
 Caffè Macchiato
 Creamy Dolce
 Shadowed Custard
 Sandy Mink

REDS:
 Cherry Merlot

GRAYS:
 Silver Frost

HYBRANT GRAYS:
 Moonstone



LACEY

5023

Gorgeous, long style with a center skin part for a very natural appearance.

COLOR SHOWN:
Sunny Spice

Cap: Center Skin Top
Fringe: 3.5" (8.9 cm)
Crown: 15" - 15.75" (38.1 - 40 cm)
Nape: 14.5" (36.8 cm)
Weight: 5 oz (142 g)

BRUNETTES:
Chestnut
Chocolate Swirl
Coffee Bean
Fudge Ripple
Sepia
Walnut

HYBRANT BRUNETTES:
Chocolate Frost-R
Coffee Latte-R
Marble Brown-R

BLONDS:
Buttered Toast
Champagne Blush
Creamy Blond
Frosti Blond
Honey Wheat
Mochaccino
Pralines & Cream
Sugar Cookie
Sunny Spice

HYBRANT BLONDS:
Champagne-R
Creamy Toffee-R
Crème Brulee

REDS:
Cherry Cola
Cinnamon Swirl
Ginger Snap
Rum Raisin
Tomato Bisque

GRAYS:
Sandy Silver

HYBRANT GRAYS:
Illumina-R

TRANSITION COLORS:
Java Blast
Toasted Shine



PETITE PORTIA

5022

A sleek and sexy bob that features a natural monofilament part.

COLOR SHOWN:
Cherry Cola

Cap: Mono Part Petite
Fringe: 4" (10.16 cm)
Crown: 11" (28 cm)
Nape: 4" (10.16 cm)
Weight: 3.4 oz (96 g)

BRUNETTES:
Chestnut
Chocolate Swirl
Coffee Bean
Pecan
Sepia

HYBRANT BRUNETTES:
Chocolate Frost-R
Coffee Latte-R

BLONDS:
Buttered Toast
Champagne Blush
Creamy Blond
Frosti Blond
Honey Wheat
Pralines & Cream
Sugar Cookie
Sunny Spice

HYBRANT BLONDS:
Champagne-R
Coco Cream
Creamy Toffee-R
Crème Brulee

REDS:
Cherry Cola
Ginger Snap
Rum Raisin
Tomato Bisque

HYBRANT REDS:
Auburn Sugar-R

GRAYS:
Sandy Silver

HYBRANT GRAYS:
Illumina-R

TRANSITION COLORS:
Java Blast



SERENA

5025

Gorgeous shag style with razored layers that frame the face.

COLOR SHOWN:
Sugar Cookie

Cap: Machine Made
Fringe: 4.25" (11 cm)
Crown: 5.75" (14.5 cm)
Nape: 13.25" (33.5 cm)
Weight: 3.9 oz (110 g)

BRUNETTES:
Chestnut
Chocolate Swirl
Coffee Bean
Pecan
Sepia
Walnut

HYBRANT BRUNETTES:
Marble Brown-R

BLONDS:
Champagne Blush
Creamy Blond
Frosti Blond
Pralines & Cream
Sunny Spice

HYBRANT BLONDS:
Champagne-R
Coco Cream
Creamy Toffee-R

REDS:
Cinnamon Swirl
Tomato Bisque

HYBRANT REDS:
Auburn Sugar-R

GRAYS:
Sandy Silver

HYBRANT GRAYS:
Illumina-R
Moonstone



SCORPIO

5020

*Chin-length bob with wispy bangs.
One of our most popular styles!*

COLOR SHOWN:
Mochaccino

Cap: Machine Made
Fringe: 3.5" (8.9 cm)
Crown: 6.25" - 9.75"
(15.9 cm - 24.8 cm)
Nape: 2.25" (5.5 cm)
Weight: 3 oz (85 g)

BRUNETTES:
Chestnut
Coffee Bean
Fudge Ripple
Pecan
Sepia
Walnut

HYBRANT BRUNETTES:
Chocolate Frost-R
Coffee Latte-R
Marble Brown-R

BLONDS:
Buttered Toast
Champagne Blush
Creamy Blond
Honey Wheat
Mochaccino
Pralines & Cream
Sugar Cookie
Sunny Spice

HYBRANT BLONDS:
Caffe Macchiato
Champagne-R
Coco Cream
Creamy Toffee-R
Crème Brulee
Nutmeg-F

REDS:
Cherry Cola
Cinnamon Swirl
Ginger Snap
Rum Raisin

HYBRANT REDS:
Auburn Sugar-R

GRAYS:
Sandy Silver

HYBRANT GRAYS:
Illumina-R
Moonstone

TRANSITION COLORS:
Java Blast



SCORPIO PM

5024

*Our most popular style now in a lace
front with monofilament part.*

COLOR SHOWN:
Coffee Latte-R

Cap: Lace Front / Mono Part
Fringe: 3.5" (8.9 cm)
Crown: 6.25" - 9.75" (15.9 cm - 24.8 cm)
Nape: 2.25" (5.5 cm)
Weight: 3 oz (85 g)

BRUNETTES:
Coffee Bean
Fudge Ripple
Pecan
Sepia
Walnut

HYBRANT BRUNETTES:
Chocolate Frost-R
Coffee Latte-R
Marble Brown-R

BLONDS:
Champagne Blush
Creamy Blond
Frosti Blond
Honey Wheat
Mochaccino
Pralines & Cream
Sugar Cookie

HYBRANT BLONDS:
Caffe Macchiato
Champagne-R
Coco Cream
Creamy Toffee-R
Crème Brulee
Nutmeg-F

REDS:
Cinnamon Swirl
Tomato Bisque

HYBRANT REDS:
Auburn Sugar-R

GRAYS:
Sandy Silver

HYBRANT GRAYS:
Illumina-R

TRANSITION COLORS:
Java Blast
Toasted Shine



SYDNEY

5026

A breathable and natural looking back 3/4 partial wig that will blend with your own hairline.

COLOR SHOWN:
Coffee Bean

Cap: 3/4 Fall
Fringe: 10.5" (26.7 cm)
Crown: 12.5"-14" (31.8 cm- 35.6 cm)
Nape: 17.5" (44 cm)
Weight: 5.1 oz (144 g)

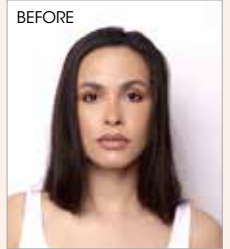
BRUNETTES:
Chestnut
Coffee Bean
Fudge Ripple
Pecan
Sepia
Walnut

BLONDS:
Buttered Toast
Champagne Blush
Sugar Cookie

HYBRANT BLONDS:
Coco Cream
Crème Brulee

REDS:
Cherry Cola
Ginger Snap
Rum Raisin

TRANSITION COLORS:
Java Blast
Toasted Shine



VALENTINA

5027

Sultry boy cut with all-over layering for light body and volume.

COLOR SHOWN:
Sugar Cookie

Cap: Monofilament
Fringe: 2.75" (6.7 cm)
Crown: 3.5" (8.9 cm)
Nape: 2" (5 cm)
Weight: 1.9 oz (53 g)

BRUNETTES:
Chestnut
Coffee Bean
Fudge Ripple
Pecan
Sepia
Walnut

HYBRANT BRUNETTES:
Brown Sugar

BLONDS:
Buttered Toast
Champagne Blush
Pralines & Cream
Sugar Cookie
Sunny Spice

HYBRANT BLONDS:
Coco Cream
Crème Brulee

REDS:
Cherry Cola
Ginger Snap
Rum Raisin
Tomato Bisque

TRANSITION COLORS:
Java Blast
Toasted Shine



DISCREET TOPPER

8703

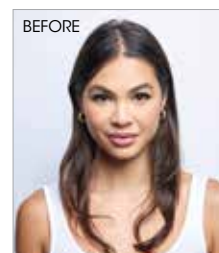
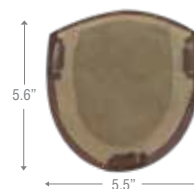
*Medium-length,
monofilament top piece
made with human hair.*

COLOR SHOWN:
Cappuccino

Cap: Monofilament
Base Size: 5.6" - 5.5" (14.3 cm - 14 cm)
Hair Length: 6" - 12" (12.2 cm - 30.5 cm)
Weight: 5.5 oz (157 g)

BRUNETTES:
Brown Spice
Cappuccino
Dark Chocolate
Honey Brown

HYBRANT BLONDS:
Moonlight Blonde Root





KRIS

8704

This sophisticated, tapered style features a monofilament top for a natural look.

COLOR SHOWN:
Golden Wheat

Cap: Monofilament
Fringe: 4" (10.16 cm)
Crown: 4" (10.16 cm)
Nape: 2.5" (6.4 cm)
Weight: 2.6 oz (73 g)

BRUNETTES:
Brown Spice
Cappuccino
Dark Chocolate
Honey Brown

BLONDS:
Golden Wheat

HYBRANT BLONDS:
Moonlight Blonde Root



LILY

8705

A monofilament top wig with a chic side fringe creates a modern, classy look.

COLOR SHOWN:
Honey Brown

Cap: Monofilament
Fringe: 7" - 8" (17.8 cm - 20.3 cm)
Crown: 9" - 13" (23 cm - 33 cm)
Nape: 13" (33 cm)
Weight: 5.5 oz (157 g)

BRUNETTES:
Brown Spice
Cappuccino
Dark Chocolate
Honey Brown

BLONDS:
Golden Wheat

HYBRANT BLONDS:
Moonlight Blonde Root



ORCHID HH TP 9"

4113

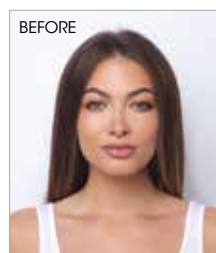
This stylish human hair topper is a simple way to add density and coverage to your hair.

COLOR SHOWN:
Marigold (left insets)
Almond Toast (right)

Cap: Monofilament
Fringe: 7.5" (19 cm)
Crown: 9 (22.8 cm)
Weight: 2.4 oz (68 g)

BRUNETTES
Almond Toast
Coffee Noir
Cappuccino

BLONDS
Marigold
Sunlit Sand



Accessories



8119
17" MANNEQUIN



8123
21" MANNEQUIN



9580
WIG CAP
Available Colors:
Beige, Black,
and Brown



9581
WIG LINER
OPEN MESH
Available Colors:
Beige, Black,
and Brown



9593 2-SIDED
VELVET GRIP
Available Colors:
Beige, Brown



9592
VELVET GRIP
WITH SHORT LACE
Available Colors:
Brown, Beige



9586
BULK BEIGE
WIG CAP
Sold in 12 pcs



8128
18" WHITE
MANNEQUIN
no logo



8129
18" GRAY
MANNEQUIN
with logo



8130
18" BLACK
MANNEQUIN
with logo



8131
18" WHITE
MANNEQUIN
with logo



9584
ROP WIG
STAND



9560
STYROFOAM HEAD
12pc package



8113 MANNEQUIN
HOOK

9582
WIG STAND
PACKAGE
3pc package
contains colors:
Black, Blue & Gray
Sold separately: 9583
Black, Blue, Gray
Convenient "snap
together" stand for wig
storage or service.



9585
SILVER COMB CLIP
Sold in 12 pcs



9587
ROP WIG LIFT COMB



9561
RENE OF PARIS FLAT IRON



9591
ROP FOLDING BRUSH



965
WIRE BRUSH

5019
SWATCHES

The color swatches
let you see your
perfect hair match.



THE
Orchid
By RENÉ OF PARIS™

RENÉ OF PARIS™

MAINTENANCE TOOLS



ROP Prepare Shampoo 9950 8 oz. 9954 2 oz.	ROP Light Conditioner 9953 8 oz. 9955 2 oz.	ROP Protect Holding Spray 9952 8 oz. 9956 2 oz.	ROP Revive Liquid Enhancement 9951 8 oz.
------------------------------------------------------------	--------------------------------------------------------------	------------------------------------------------------------------	------------------------------------------------------

Rene of Paris Prepare Shampoo

This luxurious shampoo is formulated with the ultimate in moisture replenishing cleansers. Rene of Paris Prepare Shampoo helps maintain the smoothness, strength and polish of your wig/hairpiece.

The gentle combination of plant and vegetable extracts, along with natural essential oils and vitamins, provides a gentle but thorough cleansing of your wig/hairpiece. The results will revolutionize how you feel.

Rene of Paris Light Conditioner

Rene of Paris Conditioner for synthetic wigs revitalizes dull hair leaving it softer, shinier and easy to manage.

Rene of Paris Protect Holding Spray

The final stop in maintaining and styling your wig/hairpiece. This holding spray adds shine while gently, yet firmly, holding your desired style.

Rene of Paris Revive Liquid Enhancement

The finest advanced liquid developed for synthetic fiber hair. Rene of Paris Revive Liquid Enhancement will revive your wig/hairpiece and give it the brand new feel.

Not only helps eliminate frizz while adding luster, texture and volume, but also protects your wig/hairpiece from the daily stresses.

We are delighted that you have chosen to become one of our valued customers. We appreciate your business as well as any inquiries regarding the following:

APPLICABILITY:

1. The following terms and conditions ("Terms") are the only terms which govern the sale of the goods ("Goods") by Aderans Hair Goods, Inc. ("AHG") to its customers (each referred to hereafter as "Buyer," or "You"). Notwithstanding anything herein to the contrary, if a written contract signed by both parties is in existence covering the sale of the Goods covered hereby, the terms and conditions of said contract shall prevail to the extent they are inconsistent with these Terms.

2. These Terms, together with the applicable invoice and the Statement of Policy defined below (collectively, this "Agreement"), comprise the entire agreement between the parties, and supersede all prior or contemporaneous understandings, agreements, negotiations, representations and warranties, and communications, both written and oral. These Terms prevail over any of Buyer's general terms and conditions of purchase regardless whether or when Buyer has submitted its purchase order or such terms. Acceptance of Buyer's purchase order or fulfillment of Buyer's order does not constitute acceptance of any of Buyer's terms and conditions and does not serve to modify or amend these Terms.

ACCEPTANCE OF PURCHASE ORDER. AHG has the right, in its sole discretion, to accept or reject any purchase order issued by You. AHG may accept any purchase order by confirming the order (whether by written confirmation, invoice or otherwise) or by delivering the Goods, whichever occurs first. No purchase order is binding on AHG unless accepted by AHG.

PRICES. You shall purchase the Goods from AHG at the prices set forth in AHG's price list in effect at the time that AHG accepts Your purchase order ("Prices"). Prices are exclusive of, and You are solely responsible for, and shall pay, any and all taxes, with respect to, or measured by, the manufacture, sale, shipment, use or Price of the Goods; provided, however, that You shall not be responsible for any taxes imposed on, or with respect to, AHG's income, revenues, gross receipts, personnel or real or personal property or other assets.

PAYMENT TERMS: AHG accepts payment by Visa, MasterCard, AMEX, Discover, money order, wire transfer and COD. Upon approval, credit terms may be available.

CREDIT PURCHASES: If You wish to apply for an AHG 30-day open account (NET-30), contact Your AHG sales representative and request a credit application.

SHIPPING/HANDLING: You will pay for all shipping charges and insurance costs. AHG offers shipping via UPS next day air, 2-3 day air, and ground. There is a handling charge of \$1.00 for all orders. For each purchase order accepted by AHG, AHG may, in its sole discretion, without liability or penalty, make partial shipments of Goods to You. Each shipment will constitute a separate sale and You will pay for the units shipped whether such shipment is in whole or partial fulfillment of a purchase order.

TRANSFER OF TITLE & RISK OF LOSS: Title passes to You upon delivery of the Goods to

the address You specified in the purchase order. Risk of loss or damage to the Goods passes to You upon AHG's tender of such units to the carrier at AHG's location in Chatsworth, CA.

STATEMENT OF POLICY: You must comply with the Statement of Policy and Guidelines for Using Aderans' Trademarks and Copyrights (the "Statement of Policy") which was provided to You and which may be modified or updated by AHG from time to time in its sole discretion.

RETURN POLICY: Returns will not be accepted unless pre-authorized by (AHG). Requests must be made within 30 days from receipt of Goods. Upon approval and receipt of the authorization for return label, Goods meeting the following conditions may be returned for an exchange or direct credit to Your account (freight prepaid by Buyer). NO cash refunds! If an item is to be exchanged, new shipping and handling charges will be added.

1. A copy of Your invoice must accompany all returns. The authorization for return label must be placed on the outside of the box (complete with the authorization number) and Your return address. If not, the box will be refused.

2. Returned Goods must be in MINT CONDITION. Mint condition is defined by AHG as: no missing tags or labels, the hair net is not removed, item(s) are not combed/fluffed or tried on by a customer. All returns must be in original shipping box. There is a restocking fee of \$10.00 for EACH piece returned.

3. AHG has carefully designed its product packaging to protect the product integrity. AHG is not responsible for damage to or problems with any product where the product and/or shipment packaging has been changed per Your request. No returns will be accepted under these conditions.

4. Shipping and handling fees are non-refundable.

5. Any DISCONTINUED items are not returnable.

6. AHG is not responsible for lost return packages.

It is recommended that You keep proper Proof-of-Delivery. Goods not meeting the above stipulations will be refused. AHG will not accept returns more than 30 days after receipt of Goods. If there is a factory defect or an incorrectly shipped item due to our error, a full exchange or credit will be applied directly to Your account. Note: If an item is returned for a "defective" credit and upon examination found not to be defective, credit will only be given for the item's original price (providing it still meets the above standards), and a \$10.00 restocking charge will be applied. Any additional product not authorized for return will be sent back.

NOTE: Colors shown in this catalog may not reflect actual color of product. RENÉ OF PARIS is a trademark or registered trademark of Aderans Hair Goods, Inc. and/or Aderans Co., Ltd. in the United States and other countries.

CHRISTINE HEADWEAR and the Christine Headwear logo are trademarks and/or registered trademarks of The Headwear Company in the United States and other countries.



www.reneofparis.com



FRONT COVER: KIRBY IN CARAMEL BISCOTTI
BACK COVER: NIKI IN SALT AND PEPPER

THE ORCHID COLLECTION BY RENE OF PARIS
Distributed by Aderans Hair Goods
9135 Independence Ave | Chatsworth, CA 91311 USA
Toll Free: 800.353.7363 | Fax: 818.885.0134

ROP ORCHID CATALOG 2023



2111684