

2023 EDITION

THE
ALEXANDER
COUTURE COLLECTION

ALEXANDER

SOPHISTICATED FUSION OF LIFESTYLE FASHION AND EDITORIAL GLAMOUR..

Introducing the highly anticipated 2023 Alexander Couture Collection - a sophisticated fusion of lifestyle fashion and editorial glamour.

Our exquisite selection of **human hair and heat-friendly** wigs have been expertly crafted to help you express your **unique style and personality**.

With a focus on quality and attention to detail, our collection offers a diverse range of styles and colors to suit any occasion.

Whether you're looking for a **bold statement** or a subtle enhancement, our wigs are designed to make you feel confident and beautiful.

Experience the ultimate in luxury and style with the

2023 ALEXANDER COUTURE COLLECTION

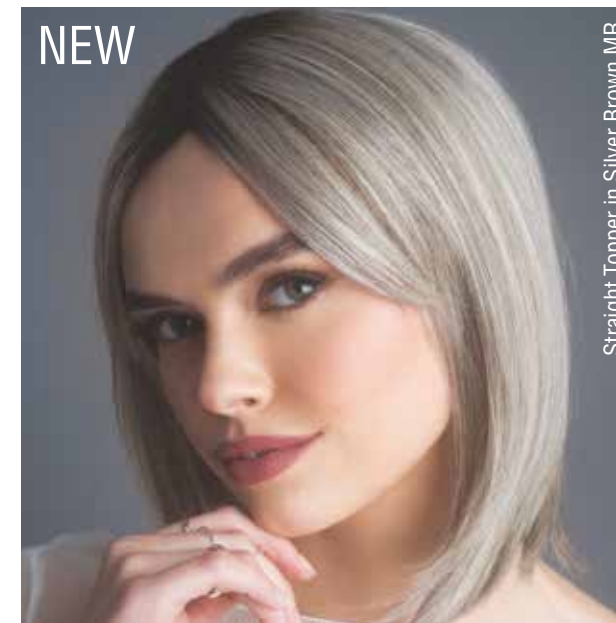


TABLE OF CONTENTS

Available Colors	4
New Styles	6-13
Available Styles	14-32
Accessories	34-35

AVAILABLE COLORS

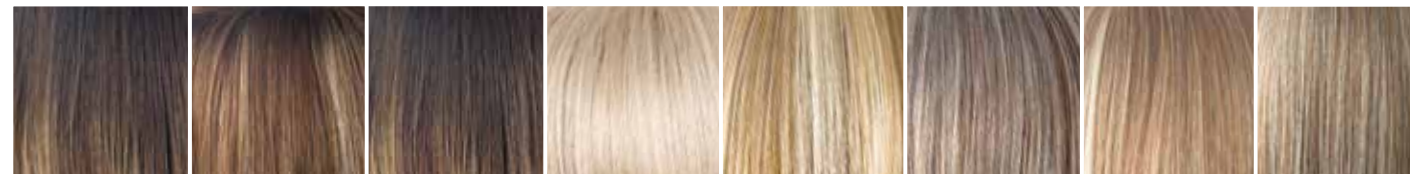
BRUNETTES



HYBRANT BRUNETTES



HYBRANT BRUNETTES



LR BRUNETTES

BLONDS



MELTED BLONDS

HYBRANT BLONDS

LR BLONDS



LR BLONDS

REDS

HYBRANT REDS



HYBRANT REDS

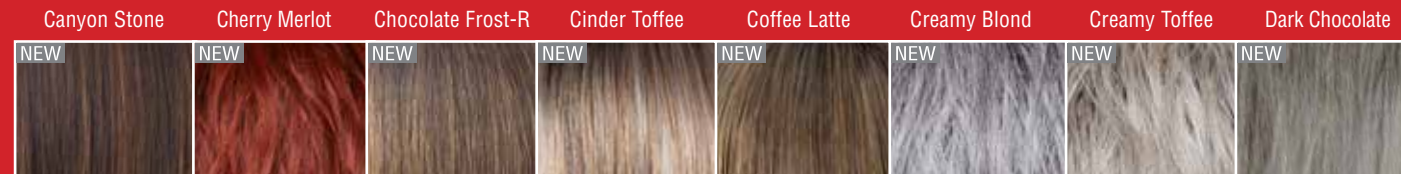
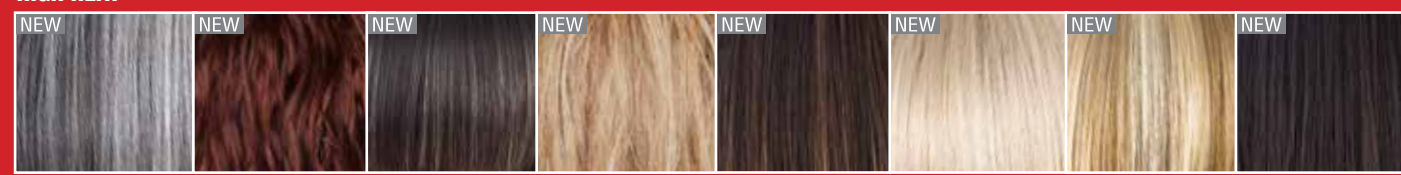
LR REDS

GRAYS

HYBRANT GRAYS



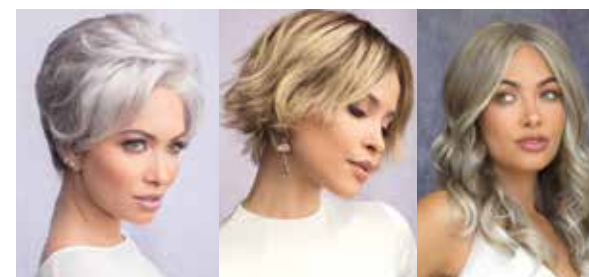
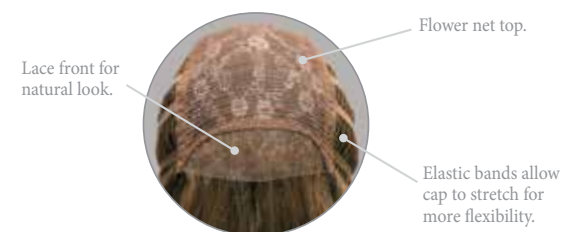
HIGH HEAT



HUMAN HAIR



Lace Front



BETHANY 1028 JOSLIN 1030 AVALON 1032

Lace Front/Lace Part

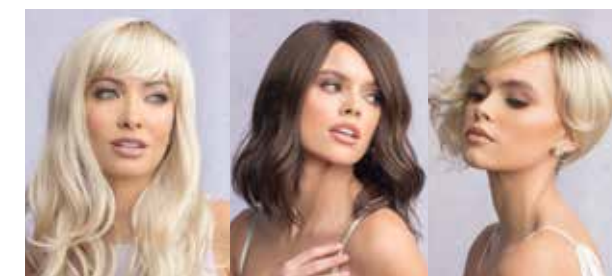


JULIE 1015 SAFI 1019 SUE 1021

Monofilament

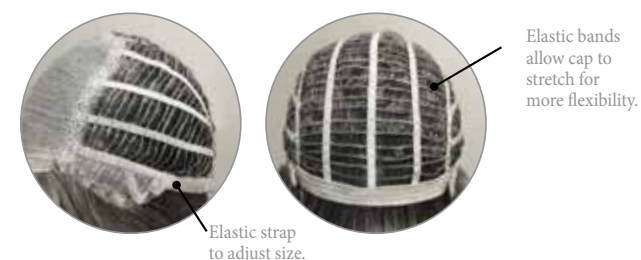


LUCY 1022 ALBEE 1023 ANGELA 1024 BECKY 1025 ASTRID 1026



ALEXANDRA 1027 ZARA 1029 VEE 1020

Machine Made



SUSANNE 1016 GABBY 1017 ANGIE 1018 AMARA 1033

Mono Part

Front to back: 6.7 inches
Side to side: 6.5 inches



STRAIGHT TOPPER 1036 WAVY TOPPER 1037

NEW HIGH HEAT



BROOKLYN

1034



COLOR SHOWN:
Cinder Toffee (Left) **NEW**
Salt & Pepper-MR (Right) **NEW**
Silver Brown-MR
(Right Bottom) **NEW**

Cap: Lace Front / Lace Part
Fringe: 5" (12.7 cm)
Crown: 15" (38 cm)
Nape: 17" (43 cm)
Weight: 6.4 oz (181 g)

HIGH HEAT BRUNETTES:
Chocolate Frost-R
Coffee Latte
Dark Chocolate
Ginger Brown
Marble Brown

HIGH HEAT BLONDS:
Cinder Toffee **NEW**
Creamy Blond
Creamy Toffee
Mochaccino-R

HIGH HEAT MELTED:
Melted Marshmallow

HIGH HEAT REDS:
Cherry Merlot
Henna Red-R **NEW**

HIGH HEAT GRAYS:
Salt & Pepper-MR **NEW**
Silver Brown-MR **NEW**
Canyon Stone
Silver Frost



Introducing the Brooklyn high heat wig, the ultimate choice for those who want to add some extra glam to their look. This stunning wig features long luscious waves that cascade down your shoulders, creating a mesmerizing and eye-catching effect that will leave you feeling like a true diva.

NEW HUMAN HAIR



HARRIET

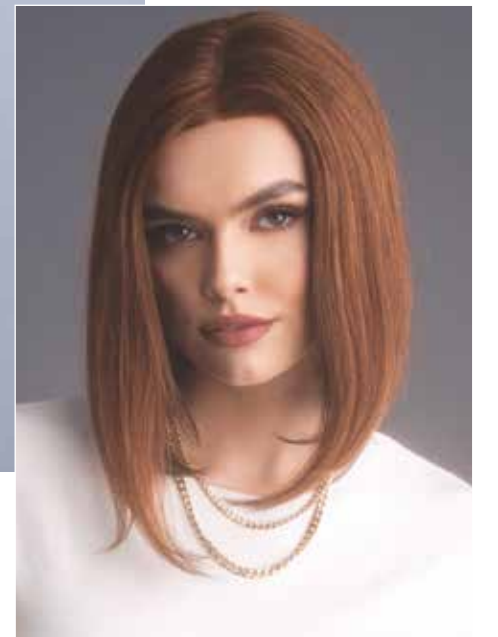
1035



COLOR SHOWN:
Summer Blond (Left) **NEW**
Autumn Teak (Right Top) **NEW**
Beige Brown (Right Bottom) **NEW**

Cap: Lace Front / Lace Part
Front: 12" (30 cm)
Crown: 11" (28 cm)
Nape: 4" (10 cm)
Weight: 3.8 oz (108 g)

HUMAN HAIR: NEW
Ashen Cream
Autumn Teak
Beige Brown
Coco Brown
Sandy Blond-R
Summer Blond
Strawberry Blond



The Harriet human hair wig is the perfect choice for those who want a chic and modern look. With its medium length bob style, this wig is both stylish and versatile. Crafted from high-quality human hair, it offers a natural look and feel that will leave you feeling confident and beautiful.

NEW HIGH HEAT



STRAIGHT MEDIUM TOPPER

1036



COLOR SHOWN:
Salt & Pepper MR (Left) **NEW**
Silver Brown MR (Right) **NEW**

Cap: Mono Part
Fringe: 5" (12.7 cm)
Crown: 12" (30 cm)
Weight: 3.4 oz (95 g)

HIGH HEAT BRUNETTES:

Chocolate Frost-R
Dark Chocolate
Ginger Brown
Marble Brown

HIGH HEAT BLONDS:

Cinder Toffee **NEW**
Creamy Blond
Creamy Toffee
Mochaccino-R

HIGH HEAT MELTED:

Melted Marshmallow

HIGH HEAT REDS:

Cherry Merlot

HIGH HEAT GRAYS:

Salt & Pepper-MR **NEW**
Silver Brown-MR **NEW**
Canyon Stone
Silver Frost

Our Medium Straight Topper is designed to give you a natural-looking solution for thinning hair or bald spots. This topper is soft, silky, and easy to style. The straight texture is perfect for those who prefer a sleek and polished look, and the medium length and density provide natural-looking coverage.

NEW HIGH HEAT



WAVY MEDIUM TOPPER

1037

COLOR SHOWN:
Cinder Toffee (Left) **NEW**
Silver Brown MR (Right) **NEW**

Cap: Mono Part
Fringe: 14" (35 cm)
Crown: 14" (35 cm)
Weight: 4 oz (114 g)

HIGH HEAT BRUNETTES:
Chocolate Frost-R
Dark Chocolate
Ginger Brown
Marble Brown

HIGH HEAT BLONDS:
Cinder Toffee **NEW**
Creamy Blond
Creamy Toffee
Mochaccino-R

HIGH HEAT MELTED:
Melted Marshmallow

HIGH HEAT REDS:
Cherry Merlot

HIGH HEAT GRAYS:
Salt & Pepper-MR **NEW**
Silver Brown-MR **NEW**
Canyon Stone
Silver Frost

Our Medium Wavy Topper is the perfect solution for those looking to add volume and texture to their existing hair or wig. This topper is soft, natural-looking, and easy to style. The wavy texture adds a touch of effortless glamour to any look, while the medium length and density provide natural-looking coverage for thinning hair or bald spots.

HARPER

1031



COLOR SHOWN:
Smoke Ivory

Cap: Lace Front / Lace Part
Fringe: 15.35" (40 cm)
Crown: 17.72" (45 cm)
Nape: 11.81" (30 cm)
Weight: 5.75 oz (163 g)

BRUNETTES:
Dark Chocolate

HYBRANT BRUNETTES:
Chocolate Frost-R
Coffee Latte-R
Iced Mocha-R

LR BRUNETTES:
Milk Tea-LR
Marble Brown-LR

BLONDS:
Creamy Blond
Ice Blond
Spring Honey-T

HYBRANT BLONDS:
Champagne-R
Mochaccino-R
Rose Gold-R

LR BLONDS:
Creamy Toffee-LR

MELTED BLONDS:
Melted Marshmallow

HYBRANT REDS:
Auburn Sugar-R
Razberry Ice-R

LR REDS:
Plumberry Jam-LR

HYBRANT GRAYS:
Smoke Ivory

This beautiful new long hair style is a must have, Both Sleek and Chic, Harper has a middle part with very long layers around the front of the style, and long shattered layers throughout the back giving movement and flow.

AVAILON

1032



COLOR SHOWN:
Ice Blond

Cap: Lace front
Fringe: 9.84" (25 cm)
Crown: 15.35" (40 cm)
Nape: 14.17" (36 cm)
Weight: 5.82 oz (165 g)

BRUNETTES:
Dark Chocolate

HYBRANT BRUNETTES:
Chocolate Frost-R
Coffee Latte-R
Iced Mocha-R
Maple Sugar-R
Marble Brown-R

LR BRUNETTES:
Milk Tea-LR

BLONDS:
Creamy Blond
Ice Blond

HYBRANT BLONDS:
Champagne-R
Spring Honey-R

LR BLONDS:
Creamy Toffee-LR

MELTED BLONDS:
Melted Marshmallow

HYBRANT REDS:
Auburn Sugar-R
Razberry Ice-R

LR REDS:
Plumberry Jam-LR

HYBRANT GRAYS:
Smoke Ivory

A gorgeous center part lace front long wig, with a beautiful curl pattern. This would be right at home on a red carpet.

AMARA

1033



COLOR SHOWN:
Creamy Blond

Cap: Machine Made
Fringe: 1.97" - 3.35" (5-8.5 cm)
Crown: 3.14" (8 cm)
Nape: 1.57" (4 cm)
Weight: 2.01 oz (57g)

BRUNETTES:
Dark Chocolate

HYBRANT BRUNETTES:
Chocolate Frost-R
Coffee Lattee-R
Iced Mocha-R
Maple Sugar-R
Marble Brown-R
Mochaccino-R

BLONDS:
Creamy Blond
Ice Blond

HYBRANT BLONDS:
Champagne-R
Creamy Toffee-R
Nutmeg-F
Spring Honey-R
Sugar Cane-R

HYBRANT REDS:
Razberry Ice-R

GRAYS:
Platinum Pearl
Sandy Silver
Silver Stone™
60

HYBRANT GRAYS:
Smoke Ivory

PASTELS:
Bubblemum-R

JOSLIN

1030



COLOR SHOWN:
Creamy Toffee-LR

Cap: Lace Front
Fringe: 5.51" (14 cm)
Crown: 6.29" (16 cm)
Nape: 3.93" (10 cm)
Weight: 3.13 oz (80-89 g)

BRUNETTES:
Coffee Latte
Dark Chocolate

HYBRANT BRUNETTES:
Chocolate Frost-R
Iced Mocha-R
Maple Sugar-R

LR BRUNETTES:
Marble Brown-LR

BLONDS:
Creamy Blond

HYBRANT BLONDS:
Champagne-R
Sugar Cane-R
Nutmeg-F

LR BLONDS:
Creamy Toffee-LR

HYBRANT REDS:
Crimson -R
Irish Spice-R
Razberry Ice-R

GRAYS:
Silver Stone™



Flirty and fun, Joslin is a layered textured must have.

A modern twist to the much loved "pixi cut" by adding a long side stylish fringe, with the machine-made cap always making sure the texture and body look the best with minimal effort.

1029



Mid length wavy, super fashionable style.

COLOR SHOWN:
Coffee Latte (Top)
Moonstone (Bottom)

Cap: Lace Front / Lace Part
Fringe: 11.81" (30 cm)
Crown: 11.81" (30 cm)
Nape: 5.12" (13 cm)
Weight: 4.66-5.01 oz (132-142 g)

BRUNETTES:
Coffee Latte
Dark Chocolate
Ginger Brown

LR BRUNETTES:
Marble Brown-LR

HYBRANT BLONDS:
Champagne-R

LR BLONDS:
Creamy Toffee-LR
Mochaccino-LR
Spring Honey LR

MELTED BLONDS:
Melted Marshmallow

HYBRANT REDS:
Auburn Sugar-R
Crimson-LR

LR REDS:
Plumberry Jam-LR
Razberry Ice- LR

HYBRANT GRAYS:
Moonstone



1028



Flirty and fun, Joslin is a layered textured must have.

COLOR SHOWN:
Silver Stone™ (Top)
Creamy Blond (Bottom)

Cap: Lace front
Fringe: 5.91" (15 cm)
Crown: 5.12" (13 cm)
Nape: 1.58" (4 cm)
Weight: 2.12-2.34 oz (62-67 g)

BRUNETTES:
Dark Chocolate
Marble Brown

BLONDS:
Creamy Blond
Creamy Toffee
Frosti Blond
Spring Honey
Strawberry Swirl

HYBRANT BLONDS:
Champagne-R

GRAYS:
Silver Stone™
60



1027



A beautiful long piece with natural waves and a full fringe keeps this stunning new design a must have.



COLOR SHOWN:
Champagne-R

Cap: Lace Front / Lace Part
 Fringe: 4.33" (11 cm)
 Crown: 16.54" (42 cm)
 Nape: 16.54" (42 cm)
 Weight: 5.33 oz (151 g)

BRUNETTES:
 Coffee Latte
 Dark Chocolate

HYBRANT BRUNETTES:
 Iced Mocha-R

LR BRUNETTES:
 Marble Brown-LR

BLONDS:
 Creamy Blond

HYBRANT BLONDS:
 Champagne-R

LR BLONDS:
 Creamy Toffee-LR
 Mochaccino-LR
 Spring Honey LR

LR REDS:
 Plumberry Jam-LR
 Crimson-LR

MELTED:
 Melted Plum

HYBRANT GRAYS:
 Illumina-R

1026



This look is effortlessly chic, sexy and versatile. A modern take on a classic shape and a cut as timeless as the bob deserves.



COLOR SHOWN:
60

Cap: Lace front
 Fringe: 5.91" (15 cm)
 Crown: 5.12" (13 cm)
 Nape: 1.58" (4 cm)
 Weight: 2.12-2.34 oz (62-67 g)

BRUNETTES:
 Coffee Latte
 Dark Chocolate
 Ginger Brown
 Iced Mocha

HYBRANT BRUNETTES:
 Chocolate Frost-R
 Marble Brown-R

BLONDS:
 Creamy Blond

HYBRANT BLONDS:
 Champagne-R
 Creamy Toffee-R
 Mochaccino-R
 Spring Honey R
 Sugar Cane-R

MELTED BLONDS:
 Melted Marshmallow

LR REDS:
 Plumberry Jam-LR

GRAYS:
 Silver Stone™
 60

HYBRANT GRAYS:
 Illumina-R

BECKY

1025



Very classy and elegant, this short layered style with gentle feminine flicks in the nape is both very wearable and soft.



COLOR SHOWN:
Silver Stone™

Cap: Monofilament
Fringe: 5.91" (15 cm)
Crown: 7.87" (20 cm)
Nape: 3.94" (10 cm)
Weight: 3.2 oz (91 g)

BRUNETTES:

Coffee Latte
Dark Chocolate
Ginger Brown

HYBRANT BRUNETTES:

Iced Mocha-R
Marble Brown-R

BLONDS:

Creamy Blond

HYBRANT BLONDS:

Champagne-R
Creamy Toffee-R
Mochaccino-R
Nutmeg-F
Spring Honey-R
Sugar Cane-R

HYBRANT REDS:

Auburn Sugar-R

GRAYS:

Silver Stone™
60

ANGELA

1024



Flirty long layers with wispy fringe.



COLOR SHOWN:
Plumberry Jam-LR

Cap: Monofilament
Fringe: 3.93"- 4.72"
(10 cm - 12 cm)
Crown: 14.96" (38 cm)
Nape: 11.81" (30 cm)
Weight: 5.39 oz (153 g)

BRUNETTES:

Coffee Latte
Dark Chocolate

HYBRANT BRUNETTES:

Iced Mocha-R
Marble Brown-R

BLONDS:

Creamy Blond

HYBRANT BLONDS:

Champagne-R
Creamy Toffee-R
Mochaccino-R
Spring Honey-R

LR REDS:

Plumberry Jam-LR

ALBERT

1023



A classic short style with feathered layers.



COLOR SHOWN:
Nutmeg-F

Cap: Monofilament
Fringe: 3.54" (9 cm)
Crown: 5.11" (13 cm)
Nape: 2.36" (6 cm)
Weight: 2.15 oz (61 g)

BRUNETTES:
Coffee Latte
Dark Chocolate

HYBRANT BRUNETTES:
Chocolate Frost-R
Iced Mocha-R
Maple Sugar-R

GRAYS:
Silver Stone™

BLONDS:
Creamy Blond

HYBRANT BLONDS:
Champagne-R
Creamy Toffee-R
Nutmeg-F
Sugar Cane-R

HYBRANT REDS:
Crimson-R
Raspberry Ice-R

TRICKY

1022



Sleek medium length style with flipped ends.



COLOR SHOWN:
Marble Brown-R

Cap: Monofilament
Fringe: 5.51" (14 cm)
Crown: 11.02" (28 cm)
Nape: 8.26" (21 cm)
Weight: 5.36 oz (152 g)

BRUNETTES:
Coffee Latte
Dark Chocolate
Ginger Brown

HYBRANT BRUNETTES:
Marble Brown-R

BLONDS:
Creamy Blond

HYBRANT BLONDS:
Champagne-R
Creamy Toffee-R
Mochaccino-R
Spring Honey-R

HYBRANT REDS:
Irish Spice-R

LR REDS:
Plumberry Jam-LR

STYL

1021



Classic Lace-Front/Lace-Part bob with fringe.

COLOR SHOWN:
Mochaccino-R

Cap: Lace Front / Lace Part
Fringe: 3.54" (9 cm)
Crown: 9.05" (23 cm)
Nape: 1.57" (4 cm)
Weight: 2.89 oz (82 g)

BRUNETTES:
Coffee Latte
Dark Chocolate
Ginger Brown

HYBRANT BRUNETTES:
Chocolate Frost-R

BLONDS:
Creamy Blond

LR BLONDS:
Creamy Toffee-LR

HYBRANT BLONDS:
Champagne-R
Mochaccino-R
Spring Honey-R

LR BRUNETTES:
Marble Brown-LR

LR REDS:
Plumberry Jam-LR

HYBRANT REDS:
Razberry Ice-R



VALERIE

1020



Runway inspired asymmetric cut with bouncy curls.

COLOR SHOWN:
Champagne-R

Cap: Lace Front / Lace Part
Fringe: 5.51" - 9.05"
(14 cm - 23 cm)
Crown: 7.48" (19 cm)
Nape: 1.57" (4 cm)
Weight: 2.64 oz (75 g)

BRUNETTES:
Dark Chocolate
Coffee Latte

HYBRANT BRUNETTES:
Marble Brown-R

HYBRANT GRAYS:
Illumina-R

LR REDS:
Plumberry Jam-LR

BLONDS:
Creamy Blond

HYBRANT BLONDS:
Champagne-R
Creamy Toffee-R
Mochaccino-R
Spring Honey-R

LR BLONDS:
Macadamia-LR



SALE

1019



Salon inspired bob with beach waves.

COLOR SHOWN:
Spring Honey-LR

Cap: Lace Front / Lace Part
Fringe: 10.23" - 11.02"
(26 cm - 28 cm)
Crown: 9.84" (25 cm)
Nape: 2.36" (6 cm)
Weight: 3.52 oz (100 g)

BRUNETTES:

Coffee Latte
Dark Chocolate
Ginger Brown

LR BRUNETTES:

Marble Brown-LR

HYBRANT REDS:

Auburn Sugar-R

MELTED BLONDS:

Melted Marshmallow

HYBRANT BLONDS:

Champagne-R
Creamy Toffee-R

LR BLONDS:

Mochaccino-LR
Spring Honey-LR

LR REDS:

Razberry Ice-LR
Plumberry Jam-LR



ANGLE

1018



Sleek A-line cut with full fringe.

COLOR SHOWN:
Maple Sugar-R

Cap: Machine Made
Fringe: 3.93" (10 cm)
Crown: 6.29" (16 cm)
Nape: 1.57" (4 cm)
Weight: 3.35 oz (95 g)

BRUNETTES:

Dark Chocolate
Coffee Latte

HYBRANT BRUNETTES:

Chocolate Frost-R
Iced Mocha-R
Marble Brown-R
Maple Sugar-R

BLONDS:

Creamy Blond

HYBRANT BLONDS:

Creamy Toffee-R
Mochaccino-R
Spring Honey-R

LR BLONDS:

Macadamia-LR



GABBY

1017



Fashion forward pixie with tapered nape.



COLOR SHOWN:
Champagne-R

Cap: Machine Made
Fringe: 2.36" (6 cm)
Crown: 4.33" (11 cm)
Nape: 2.36" (6 cm)
Weight: 2.04 oz (58 g)

BRUNETTES:
Dark Chocolate
Marble Brown

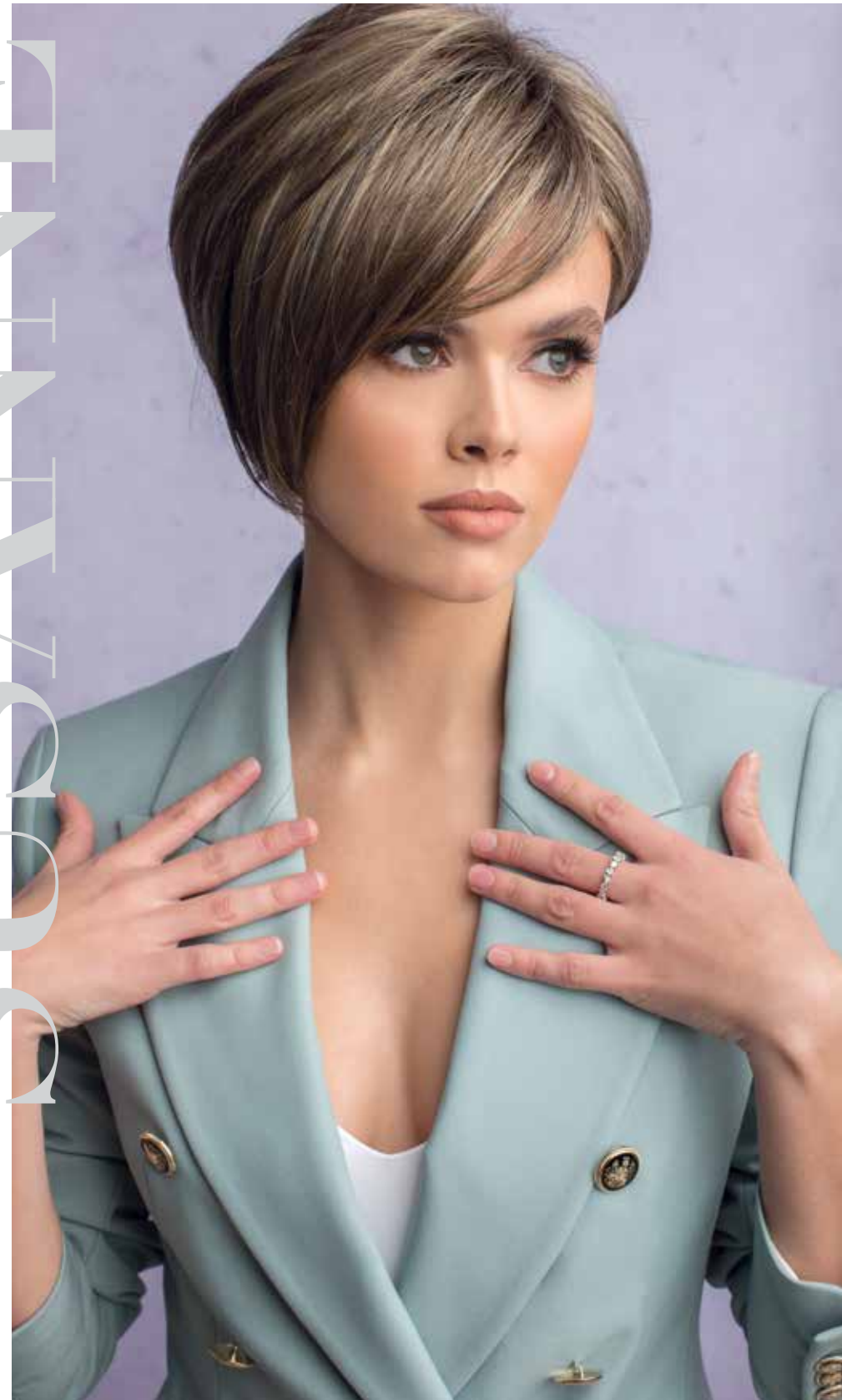
BLENDS:
Creamy Blond
Creamy Toffee
Frosti Blond
Strawberry Swirl
Spring Honey

HYBRANT BLENDS:
Champagne-R

GRAYS:
Silver Stone™
60

SUSANNE

1016



This classic cut has short layers with side swept fringe and tapered nape.



COLOR SHOWN:
Chocolate Frost-R

Cap: Machine Made
Fringe: 5.51" - 7.08" (14-18 cm)
Crown: 4.72" (12 cm)
Nape: 2.36" (6 cm)
Weight: 2.46 oz (70 g)

BRUNETTES:
Dark Chocolate

HYBRANT BRUNETTES:
Chocolate Frost-R
Coffee Latte-R
Iced Mocha-R
Maple Sugar-R

BLENDS:
Creamy Blond

HYBRANT BLENDS:
Champagne-R
Creamy Toffee-R
Nutmeg-F

HYBRANT REDS:
Raspberry Ice-R

GRAYS:
Silver Stone™

HILARY

1015



Playful Lace-Front/Lace-Part bob with spiral curls.



COLOR SHOWN:

Melted Marshmallow (Top)
Dark Chocolate (Bottom)

Cap: Lace Front / Lace Part
Fringe: 9.44" (24 cm)
Crown: 12.99" (33 cm)
Nape: 5.51" (14 cm)
Weight: 4.26 oz (121 g)

BRUNETTES:

Coffee Latte
Dark Chocolate
Ginger Brown

HYBRANT BRUNETTES:

Marble Brown-R

HYBRANT BLONDS:

Creamy Toffee-R
Mochaccino-R
Spring Honey-R

LR BLONDS:

Macadamia-LR

MELTED:

Melted Marshmallow

REDS:

Razberry Ice

HYBRANT REDS:

Plumberry Jam-R



COLOR SHOWN:

Harriet in Autumn Teak (Left)
Brooklyn in Silver Brown-MR (Right)

ACCESSORIES



8123
21" MANNEQUIN



8119
17" MANNEQUIN



9580
WIG CAP
Available Colors:
Beige, Black, and Brown



9581
WIG LINER
Open Mesh
Available Colors:
Beige, Black, and Brown



9593
VELVET GRIP
Available Colors:
Beige, Brown



9592
VELVET GRIP
WITH SHORT LACE
Available Colors:
Beige, Brown



9591
ROP FOLDING BRUSH



9587
ROP WIG LIFT COMB



8113
MANNEQUIN HOOK



9561
RENE OF PARIS FLAT IRON



965
WIRE BRUSH



Convenient "snap together" stand for wig storage or service.

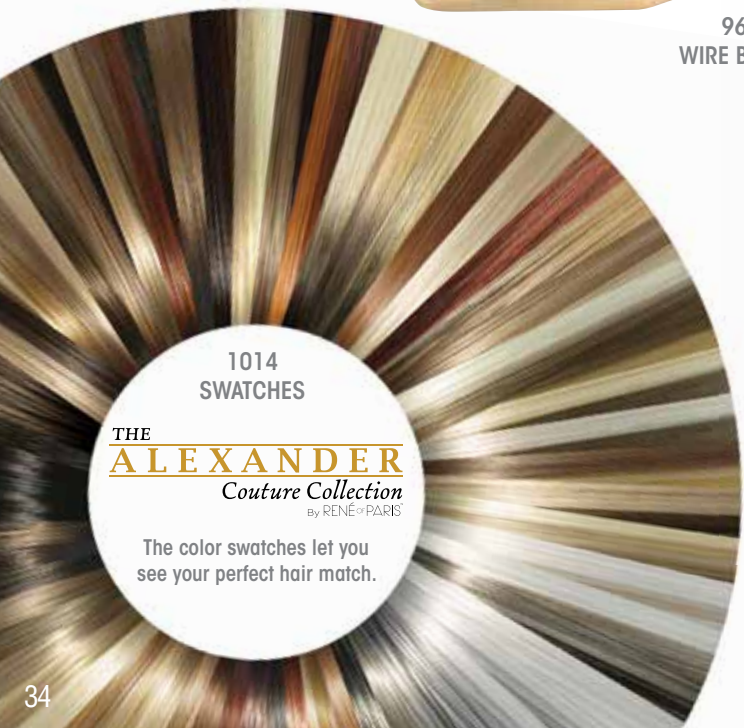
9582 WIG STAND PACKAGE

3pc package contains colors: Black, Blue & Gray

Sold separately: 9583 BLACK, BLUE, GRAY



965
WIRE BRUSH



1014
SWATCHES

THE
ALEXANDER
Couture Collection
By RENE OF PARIS

The color swatches let you see your perfect hair match.

RENE OF PARIS™

MAINTENANCE TOOLS

Rene of Paris Prepare Shampoo

This luxurious shampoo is formulated with the ultimate in moisture replenishing cleansers. Rene of Paris Prepare Shampoo helps maintain the smoothness, strength and polish of your wig/hairpiece.

The gentle combination of plant and vegetable extracts, along with natural essential oils and vitamins, provides a gentle but thorough cleansing of your wig/hairpiece. The results will revolutionize how you feel.

Rene of Paris Dual Conditioner

Rene of Paris Conditioner for synthetic wigs revitalizes dull hair leaving it softer, shinier and easy to manage.

Rene of Paris Revive Liquid Enhancement

The finest advanced liquid developed for synthetic fiber hair. Rene of Paris Revive Liquid Enhancement will revive your wig/hair piece and give it the brand new feel.

Not only helps eliminate frizz while adding luster, texture and volume, but also protects your wig/hairpiece from the daily stresses.

Rene of Paris Protect Holding Spray

The final stop in maintaining and styling your wig/hairpiece. This holding spray adds shine while gently, yet firmly, holding your desired style.



ROP Prepare Shampoo
9950 | 8 oz.
9954 | 2 oz.

ROP Light Conditioner
9953 | 8 oz.
9955 | 2 oz.

ROP Protect Holding Spray
9952 | 8 oz.
9956 | 2 oz.

ROP Revive Liquid Enhancement
9951 | 8 oz.

We are delighted that you have chosen to become one of our valued customers. We appreciate your business as well as any inquiries regarding the following:

APPLICABILITY:

1. The following terms and conditions ("Terms") are the only terms which govern the sale of the goods ("Goods") by Aderans Hair Goods, Inc. ("AHG") to its customers (each referred to hereafter as "Buyer," or "You"). Notwithstanding anything herein to the contrary, if a written contract signed by both parties is in existence covering the sale of the Goods covered hereby, the terms and conditions of said contract shall prevail to the extent they are inconsistent with these Terms.

2. These Terms, together with the applicable invoice and the Statement of Policy defined below (collectively, this "Agreement"), comprise the entire agreement between the parties, and supersede all prior or contemporaneous understandings, agreements, negotiations, representations and warranties, and communications, both written and oral. These Terms prevail over any of Buyer's general terms and conditions of purchase regardless whether or when Buyer has submitted its purchase order or such terms. Acceptance of Buyer's purchase order or fulfillment of Buyer's order does not constitute acceptance of any of Buyer's terms and conditions and does not serve to modify or amend these Terms.

ACCEPTANCE OF PURCHASE ORDER. AHG has the right, in its sole discretion, to accept or reject any purchase order issued by You. AHG may accept any purchase order by confirming the order (whether by written confirmation, invoice or otherwise) or by delivering the Goods, whichever occurs first. No purchase order is binding on AHG unless accepted by AHG.

PRICES. You shall purchase the Goods from AHG at the prices set forth in AHG's price list in effect at the time that AHG accepts Your purchase order ("Prices"). Prices are exclusive of, and You are solely responsible for, and shall pay, any and all taxes, with respect to, or measured by, the manufacture, sale, shipment, use or Price of the Goods; provided, however, that You shall not be responsible for any taxes imposed on, or with respect to, AHG's income, revenues, gross receipts, personnel or real or personal property or other assets.

PAYMENT TERMS: AHG accepts payment by Visa, MasterCard, AMEX, Discover, money order, wire transfer and COD. Upon approval, credit terms may be available.

CREDIT PURCHASES: If You wish to apply for an AHG 30-day open account (NET -30), contact Your AHG sales representative and request a credit application.

SHIPPING/HANDLING: You will pay for all shipping charges and insurance costs. AHG offers shipping via UPS next day air, 2-3 day air, and ground. There is a handling charge of \$1.00 for all orders. For each purchase order accepted by AHG, AHG may, in its sole discretion, without liability or penalty, make partial shipments of Goods to You. Each shipment will constitute a separate sale and You will pay for the units shipped whether such shipment is in whole or partial fulfillment of a purchase order.

TRANSFER OF TITLE & RISK OF LOSS: Title passes to You upon delivery of the Goods

to the address You specified in the purchase order. Risk of loss or damage to the Goods passes to You upon AHG's tender of such units to the carrier at AHG's location in Chatsworth, CA.

STATEMENT OF POLICY: You must comply with the Statement of Policy and Guidelines for Using Aderans' Trademarks and Copyrights (the "Statement of Policy") which was provided to You and which may be modified or updated by AHG from time to time in its sole discretion.

RETURN POLICY: Returns will not be accepted unless pre-authorized by (AHG). Requests must be made within 30 days from receipt of Goods. Upon approval and receipt of the authorization for return label, Goods meeting the following conditions may be returned for an exchange or direct credit to Your account (freight prepaid by Buyer). NO cash refunds! If an item is to be exchanged, new shipping and handling charges will be added.

1. A copy of Your invoice must accompany all returns. The authorization for return label must be placed on the outside of the box (complete with the authorization number) and Your return address. If not, the box will be refused.

2. Returned Goods must be in MINT CONDITION. Mint condition is defined by AHG as: no missing tags or labels, the hair net is not removed, item(s) are not combed/fluffed or tried on by a customer. All returns must be in original shipping box. There is a restocking fee of \$10.00 for EACH piece returned.

3. AHG has carefully designed its product packaging to protect the product integrity. AHG is not responsible for damage to or problems with any product where the product and/or shipment packaging has been changed per Your request. No returns will be accepted under these conditions.

4. Shipping and handling fees are non-refundable.

5. Any DISCONTINUED items are not returnable.

6. AHG is not responsible for lost return packages.

It is recommended that You keep proper Proof-of-Delivery. Goods not meeting the above stipulations will be refused. AHG will not accept returns more than 30 days after receipt of Goods. If there is a factory defect or an incorrectly shipped item due to our error, a full exchange or credit will be applied directly to Your account. Note: If an item is returned for a "defective" credit and upon examination found not to be defective, credit will only be given for the item's original price (providing it still meets the above standards), and a \$10.00 restocking charge will be applied. Any additional product not authorized for return will be sent back.

NOTE: Colors shown in this catalog may not reflect actual color of product. RENE OF PARIS is a trademark or registered trademark of Aderans Hair Goods, Inc. and/or Aderans Co., Ltd. in the United States and other countries.

CHRISTINE HEADWEAR and the Christine Headwear logo are trademarks and/or registered trademarks of The Headwear Company in the United States and other countries.



FRONT COVER: HARRIET IN SANDY BLOND-R
BACK COVER: BROOKLYN IN HENNA RED-R

www.reneofparis.com

FOLLOW US ON:



2023 THE ALEXANDER COUTURE
COLLECTON BY RENE OF PARIS™

Distributed by Aderans Hair Goods
9135 Independence Avenue
Chatsworth, CA 91311 USA
Toll Free: 800.353.7363
Fax: 818.885.0134

THE ALEXANDER COUTURE COLLECTION
BY RENE OF PARIS™ 2023



2111581