



THE

ALEXANDER

Couture Collection

By RENÉ of PARIS™

COLLECTION 2021



THE
ALEXANDER
Couture Collection
By RENÉ of PARIS™

HIGH FASHION MEETS LIFESTYLE..

With the successful launch of the Alexander Couture Collection, we are excited to introduce six new styles. Discover elegant, fashion forward looks with Zara, Bethany, Joslin, Alexandra, Becky and Astrid. The Alexander Couture Collection is designed to bring out the best version of you.

Alexander Turnbull



NEW!
BETHANY
1028
Page 8-9



NEW!
ZARA
1029
Page 10-11



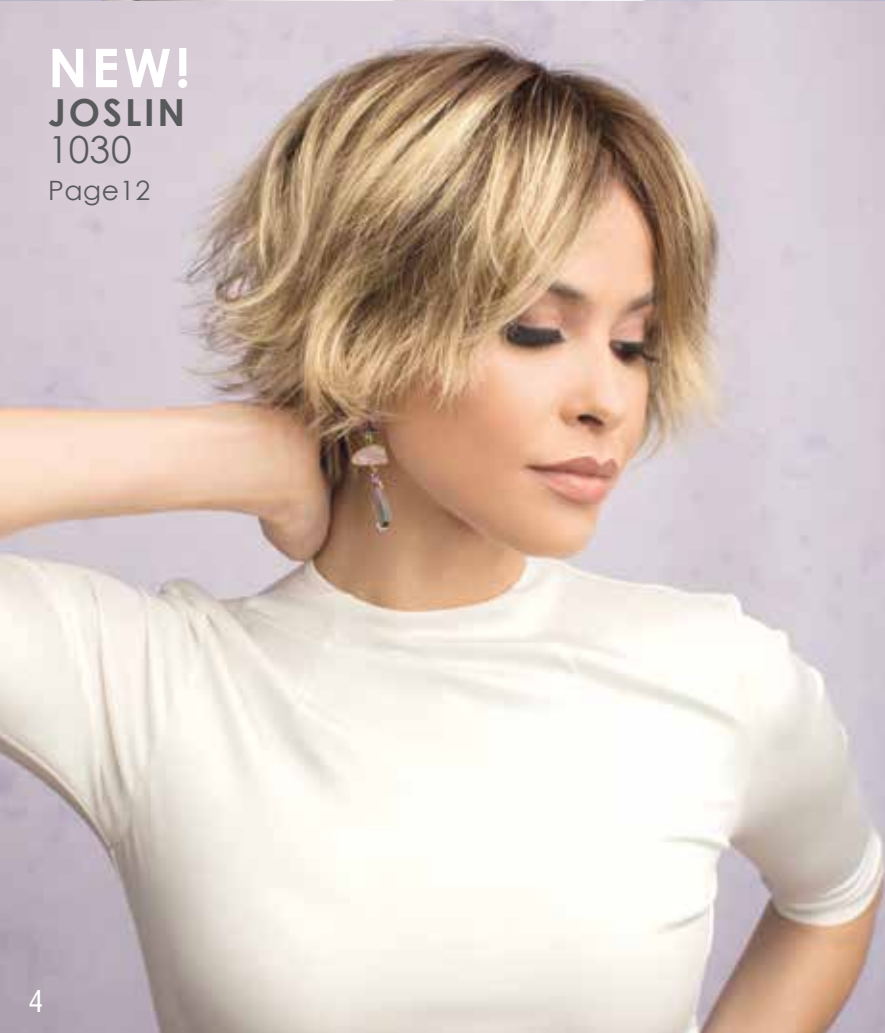
NEW!
ALEXANDRA
1027
Page 15



NEW!
BECKY
1025
Page 13



25
ANGELA 1024



NEW!
JOSLIN
1030
Page 12



16
JULIE 1015



17
SUSANNE 1016



18
GABBY 1017



NEW!
ASTRID
1026
Page 14



19
ANGIE 1018



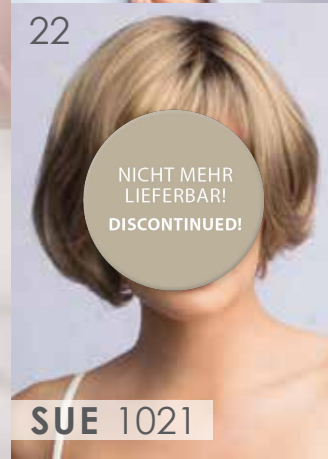
20
SAFI 1019



21
VEE 1020

TABLE OF CONTENTS

Available Colors	6
New Styles	8-15
Available Styles	16-25
Accessories	26-27



22
SUE 1021



23
LUCY 1022



24
ALBEE 1023

AVAILABLE COLORS

BRUNETTES

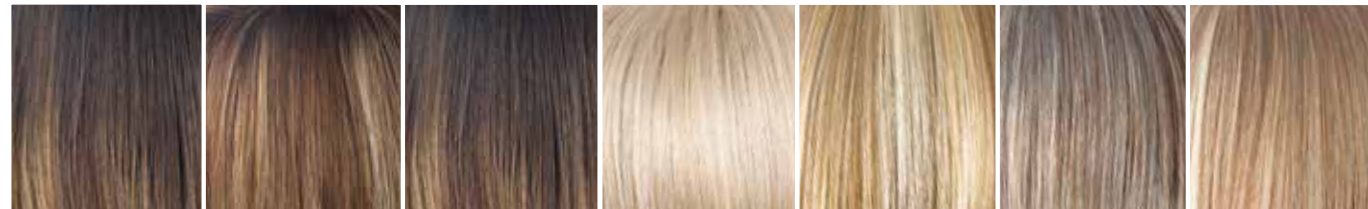


Coffee Latte Dark Chocolate Ginger Brown Marble Brown Chocolate Frost-R Coffee Latte-R Iced Mocha-R

HYBRANT BRUNETTES

LR BRUNETTES

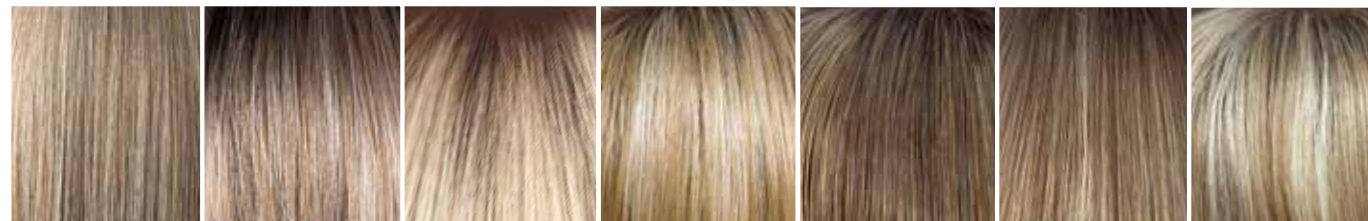
BLONDS



Marble Brown-R Maple Sugar-R Marble Brown-LR Creamy Blond Creamy Toffee Frosti Blond Strawberry Swirl

MELTED BLONDS

HYBRANT BLONDS

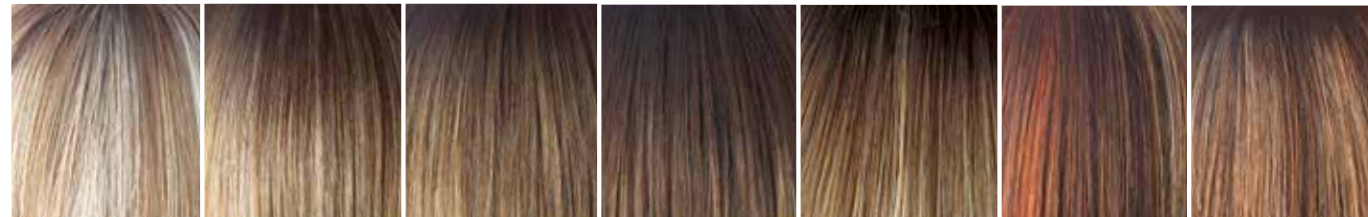


Spring Honey Melted Marshmallow Champagne-R Creamy Toffee-R Mochaccino-R Spring Honey-R Sugar Cane-R

LR BLONDS

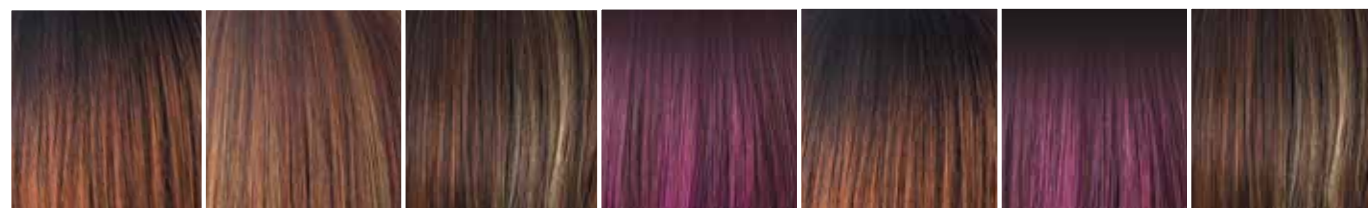
REDS

HYBRANT REDS



Nutmeg-F Cream Toffee-LR Macadamia-LR Mochaccino-LR Spring Honey-LR Raspberry Ice Auburn Sugar-R

LR REDS



Crimson-R Irish Spice-R Raspberry Ice-R Plumberry Jam-R Crimson-LR Plumberry Jam-LR Raspberry Ice-LR

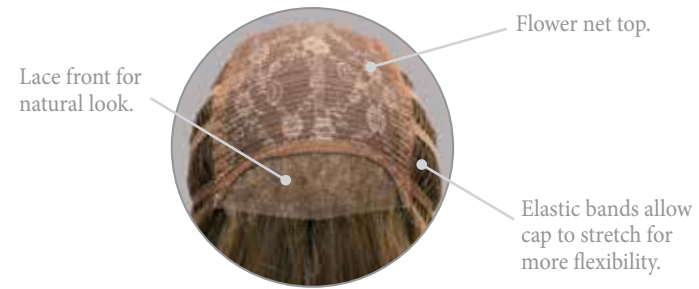
GRAYS

HYBRANT GRAYS



Silver Stone™ 60 Illumina-R Moonstone

Lace Front



BETHANY 1028 JOSLIN 1030

Lace Front/Lace Part



JULIE 1015 SAFI 1019 SUE 1021

Monofilament

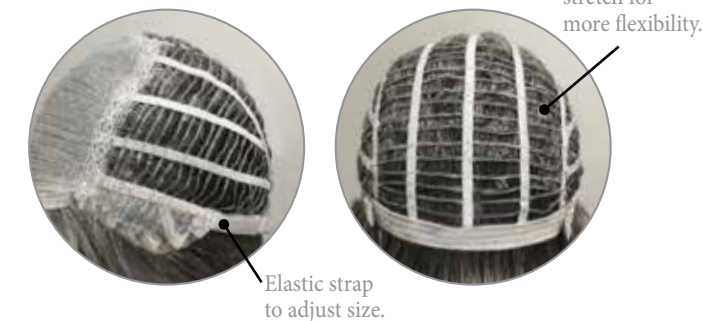


VEE 1020 LUCY 1022 ALBEE 1023



ANGELA 1024 BECKY 1025 ASTRID 1026

Machine Made



SUSANNE 1016 GABBY 1017 ANGIE 1018

NEW



BETHANY 1028

A voluminous brushed up pixie with a blowout texture. This style will give you a sleek and classy look.

COLOR SHOWN:
Silver Stone™ (Left)
Creamy Blond (Right)

Cap: Lace front
Fringe: 5.91" (15 cm)
Crown: 5.12" (13 cm)
Nape: 1.58" (4 cm)
Weight: 2.12-2.34 oz (62-67g)

BRUNETTES:
Dark Chocolate
Marble Brown

BLONDS:
Creamy Blond
Creamy Toffee
Frosti Blond
Spring Honey
Strawberry Swirl

HYBRANT BLONDS:
Champagne-R

GRAYS:
Silver Stone™
60

NEW



ZARA 1029

Mid length wavy,
super fashionable
style.

COLOR SHOWN:
Coffee Latte (Left)
Moonstone (Right)

Cap: Lace Front / Lace Part
Fringe: 11.81" (30 cm)
Crown: 11.81" (30 cm)
Nape: 5.12" (13 cm)
Weight: 4.66-5.01 oz (132-142g)

BRUNETTES:
Coffee Latte
Dark Chocolate
Ginger Brown

LR BRUNETTES:
Marble Brown-LR

HYBRANT BLONDS:
Champagne-R

LR BLONDS:
Creamy Toffee-LR
Mochaccino-LR
Spring Honey LR

MELTED BLONDS:
Melted Marshmallow

REDS:
Raspberry Ice

HYBRANT REDS:
Auburn Sugar-R
Crimson-LR

LR REDS:
Plumberry Jam-LR
Raspberry Ice- LR

HYBRANT GRAYS:
Moonstone

JOSLIN 1030

Flirty and fun, Joslin is a layered textured must have.

COLOR SHOWN:
Creamy Toffee-LR

Cap: Lace Front
Fringe: 5.51" (14 cm)
Crown: 6.29" (16 cm)
Nape: 3.93" (10 cm)
Weight: 3.13 oz (80-89 g)

BRUNETTES:
Coffee Latte
Dark Chocolate

HYBRANT BRUNETTES:
Chocolate Frost-R
Iced Mocha-R
Maple Sugar-R

LR BRUNETTES:
Marble Brown-LR

BLONDS:
Creamy Blond

HYBRANT BLONDS:
Champagne-R
Sugar Cane-R
Nutmeg-F

LR BLONDS:
Creamy Toffee-LR

HYBRANT REDS:
Crimson -R
Irish Spice-R
Raspberry Ice-R

GRAYS:
Silver Stone™

NEW NEW



BECKY 1025

Very classy and elegant, this short layered style with gentle feminine flicks in the nape is both very wearable and soft.

COLOR SHOWN:
Silver Stone™

Cap: Monofilament
Fringe: 5.91" (15 cm)
Crown: 7.87" (20 cm)
Nape: 3.94" (10 cm)
Weight: 3.2 oz (91 g)

BRUNETTES:
Coffee Latte
Dark Chocolate
Ginger Brown

HYBRANT BRUNETTES:
Iced Mocha-R
Marble Brown-R

BLONDS:
Creamy Blond

HYBRANT BLONDS:
Champagne-R
Creamy Toffee-R
Mochaccino-R
Nutmeg-F
Spring Honey-R
Sugar Cane-R

HYBRANT REDS:
Auburn Sugar-R

GRAYS:
Silver Stone™
60

ASTRID 1026

This look is effortlessly chic, sexy and versatile. A modern take on a classic shape and a cut as timeless as the bob deserves.

COLOR SHOWN:
60

Cap: Monofilament
Fringe: 3.15" (8 cm)
Crown: 10.23" (26 cm)
Nape: 4.72" (12 cm)
Weight: 4.06 oz (115 g)

BRUNETTES:

Coffee Latte
Dark Chocolate
Ginger Brown
Iced Mocha

HYBRANT

BRUNETTES:
Chocolate Frost-R
Marble Brown-R

BLONDS:

Creamy Blond

HYBRANT BLONDS:

Champagne-R
Creamy Toffee-R
Mochaccino-R
Spring Honey-R
Sugar Cane-R

MELTED BLONDS:

Melted Marshmallow

LR REDS:

Plumberry Jam-LR

GRAYS:

Silver Stone™
60

HYBRANT GRAYS:

Illumina-R

NEW NEW



ALEXANDRA 1027

A beautiful long piece with natural waves and a full fringe keeps this stunning new design a must have.

COLOR SHOWN:
Champagne-R

Cap: Lace Front / Lace Part
Fringe: 4.33" (11 cm)
Crown: 16.54" (42 cm)
Nape: 16.54" (42 cm)
Weight: 5.33 oz (151g)

BRUNETTES:

Coffee Latte
Dark Chocolate

HYBRANT

BRUNETTES:
Iced Mocha-R

LR BRUNETTES:

Marble Brown-LR

BLONDS:

Creamy Blond

HYBRANT BLONDS:

Champagne-R

LR BLONDS:

Creamy Toffee-LR
Mochaccino-LR
Spring Honey-LR

LR REDS:

Plumberry Jam-LR
Crimson-LR

MELTED:

Melted Plum

HYBRANT GRAYS:

Illumina-R



JULIE 1015

Playful Lace-Front/Lace-Part bob with spiral curls.

COLOR SHOWN:

Melted Marshmallow (Top)
Dark Chocolate (Bottom)

Cap: Lace Front / Lace Part
Fringe: 9.44" (24 cm)
Crown: 12.99" (33 cm)
Nape: 5.51" (14 cm)
Weight: 4.26 oz (121 g)

BRUNETTES:

Coffee Latte
Dark Chocolate
Ginger Brown

HYBRANT BRUNETTES:

Marble Brown-R

HYBRANT BLONDS:

Creamy Toffee-R
Mochaccino-R
Spring Honey-R

LR BLONDS:

Macadamia-LR

MELTED:

Melted Marshmallow

REDS:

Razberry Ice

HYBRANT REDS:

Plumberry Jam-R



SUSANNE 1016

This classic cut has short layers with side swept fringe and tapered nape.

COLOR SHOWN:

Chocolate Frost-R

Cap: Machine Made
Fringe: 5.51" - 7.08" (14-18 cm)
Crown: 4.72" (12 cm)
Nape: 2.36" (6 cm)
Weight: 2.46 oz (70 g)

BRUNETTES:

Dark Chocolate

HYBRANT BRUNETTES:

Chocolate Frost-R
Coffee Latte-R
Iced Mocha-R
Maple Sugar-R

BLONDS:

Creamy Blond

HYBRANT BLONDS:

Champagne-R
Creamy Toffee-R
Nutmeg-F

HYBRANT REDS:

Razberry Ice-R

GRAYS:

Silver Stone™





NICHT MEHR
LIEFERBAR!
DISCONTINUED!



GABBY 1017

Fashion forward pixie with tapered nape.

COLOR SHOWN:
Champagne-R

Cap: Machine Made
Fringe: 2.36" (6 cm)
Crown: 4.33" (11 cm)
Nape: 2.36" (6 cm)
Weight: 2.04 oz (58 g)

BRUNETTES:
Dark Chocolate
Marble Brown

BLONDS:
Creamy Blond
Creamy Toffee
Frosti Blond
Strawberry Swirl
Spring Honey

HYBRANT BLONDS:
Champagne-R

GRAYS:
Silver Stone™
60

ANGIE 1018

Sleek A-line cut with full fringe.

COLOR SHOWN:
Maple Sugar-R

Cap: Machine Made
Fringe: 3.93" (10 cm)
Crown: 6.29" (16 cm)
Nape: 1.57" (4 cm)
Weight: 3.35 oz (95 g)

BRUNETTES:
Dark Chocolate
Coffee Latte

**HYBRANT
BRUNETTES:**
Chocolate Frost-R
Iced Mocha-R
Marble Brown-R
Maple Sugar-R

BLONDS:
Creamy Blond

HYBRANT BLONDS:
Creamy Toffee-R
Mochaccino-R
Spring Honey-R

LR BLONDS:
Macadamia-LR



SAFI 1019

Salon inspired bob with beach waves.

COLOR SHOWN:
Spring Honey-LR

Cap: Lace Front / Lace Part
Fringe: 10.23" - 11.02" (26 cm - 28 cm)
Crown: 9.84" (25 cm)
Nape: 2.36" (6 cm)
Weight: 3.52 oz (100 g)

- BRUNETTES:**
Coffee Latte
Dark Chocolate
Ginger Brown
- LR BRUNETTES:**
Marble Brown-LR
- HYBRANT REDS:**
Auburn Sugar-R
- MELTED BLONDS:**
Melted Marshmallow
- HYBRANT BLONDS:**
Champagne-R
Creamy Toffee-R
- LR BLONDS:**
Mochaccino-LR
Spring Honey-LR
- LR REDS:**
Razberry Ice-LR
Plumberry Jam-LR



NICHT MEHR LIEFERBAR!
DISCONTINUED!



VEE 1020

Runway inspired asymmetric cut with bouncy curls.

COLOR SHOWN:
Champagne-R

Cap: LaceFront/LacePart
Fringe: 5.51" - 9.05" (14 cm - 23 cm)
Crown: 7.48" (19 cm)
Nape: 1.57" (4 cm)
Weight: 2.64 oz (75 g)

- BRUNETTES:**
Dark Chocolate
Coffee Latte
- HYBRANT BRUNETTES:**
Marble Brown-R
- HYBRANT GRAYS:**
Illumina-R
- LR REDS:**
Plumberry Jam-LR
- BLONDS:**
Creamy Blond
- HYBRANT BLONDS:**
Champagne-R
Creamy Toffee-R
Mochaccino-R
Spring Honey-R
- LR BLONDS:**
Macadamia-LR



NICHT MEHR LIEFERBAR!
DISCONTINUED!





NICHT MEHR
LIEFERBAR!
DISCONTINUED!



SUE 1021

Classic Lace-Front/Lace-Part bob with fringe.

COLOR SHOWN:
Mochaccino-R

Cap: Lace Front / Lace Part
Fringe: 3.54" (9 cm)
Crown: 9.05" (23 cm)
Nape: 1.57" (4 cm)
Weight: 2.89 oz (82 g)

BRUNETTES:
Coffee Latte
Dark Chocolate
Ginger Brown

**HYBRANT
BRUNETTES:**
Chocolate Frost-R

BLONDS:
Creamy Blond

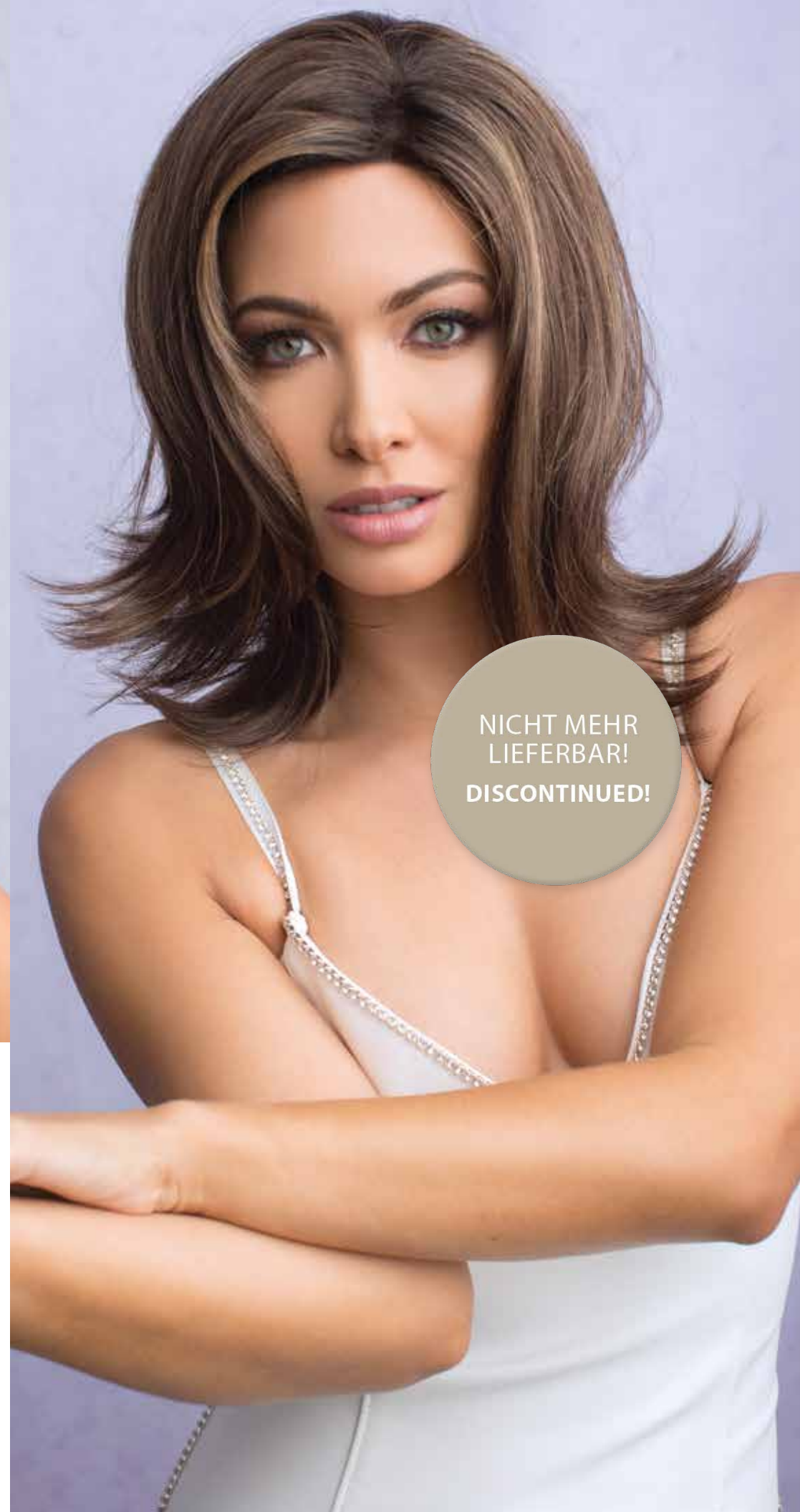
LR BLONDS:
Creamy Toffee-LR

HYBRANT BLONDS:
Champagne-R
Mochaccino-R
Spring Honey-R

LR BRUNETTES:
Marble Brown-LR

LR REDS:
Plumberry Jam-LR

HYBRANT REDS:
Razberry Ice-R



NICHT MEHR
LIEFERBAR!
DISCONTINUED!

LUCY 1022

Sleek medium length
style with flipped ends.

COLOR SHOWN:
Marble Brown-R

Cap: Monofilament
Fringe: 5.51" (14 cm)
Crown: 11.02" (28 cm)
Nape: 8.26" (21 cm)
Weight: 5.36 oz (152 g)

BRUNETTES:
Coffee Latte
Dark Chocolate
Ginger Brown

**HYBRANT
BRUNETTES:**
Marble Brown-R

BLONDS:
Creamy Blond

HYBRANT BLONDS:
Champagne-R
Creamy Toffee-R
Mochaccino-R
Spring Honey-R

HYBRANT REDS:
Irish Spice-R

LR REDS:
Plumberry Jam-LR



ALBEE 1023

A classic short style with feathered layers.

COLOR SHOWN:
Nutmeg-F

Cap: Monofilament
Fringe: 3.54" (9 cm)
Crown: 5.11" (13 cm)
Nape: 2.36" (6 cm)
Weight: 2.15 oz (61 g)

BRUNETTES:
Coffee Latte
Dark Chocolate

HYBRANT BRUNETTES:
Chocolate Frost-R
Iced Mocha-R
Maple Sugar-R

GRAYS:
Silver Stone™

BLONDS:
Creamy Blond

HYBRANT BLONDS:
Champagne-R
Creamy Toffee-R
Nutmeg-F
Sugar Cane-R

HYBRANT REDS:
Crimson-R
Raspberry Ice-R



ANGELA 1024

Flirty long layers with wispy fringe.

COLOR SHOWN:
Plumberry Jam-LR

Cap: Monofilament
Fringe: 3.93"- 4.72" (10 cm - 12 cm)
Crown: 14.96" (38 cm)
Nape: 11.81" (30 cm)
Weight: 5.39 oz (153 g)

BRUNETTES:
Coffee Latte
Dark Chocolate

HYBRANT BRUNETTES:
Iced Mocha-R
Marble Brown-R

BLONDS:
Creamy Blond

HYBRANT BLONDS:
Champagne-R
Creamy Toffee-R
Mochaccino-R
Spring Honey-R

LR REDS:
Plumberry Jam-LR



THE
ALEXANDER

Couture Collection
By RENÉ of PARIS™



2021 THE ALEXANDER COUTURE
COLLECTON BY RENE OF PARIS™

Distributed by Aderans Hair Goods
9135 Independence Avenue
Chatsworth, CA 91311 USA
Toll Free: 800.353.7363
Fax: 818.885.0134

FRONT COVER: ZARA IN CREAMY TOFFEE-LR
BACK COVER: ALEXANDRA IN CRIMSON-LR

www.reneofparis.com

FOLLOW US ON:



THE ALEXANDER COUTURE COLLECTION
BY RENE OF PARIS™ 2021



2110745