



RENÉ OF PARIS™  
HI-FASHION COLLECTION 2022





RENÉ of PARIS™  
HI-FASHION  
COLLECTION 2022

---

Meet this season's  
starting line-up

Introducing our new 2022  
Rene of Paris Hi-Fashion  
styles: Sage, Carson,  
Tara, and Wren along  
with our new colors Milky  
Opal-R and Maple Frost.  
These picture-perfect  
styles will have you  
feeling confident and  
stylish all year long.

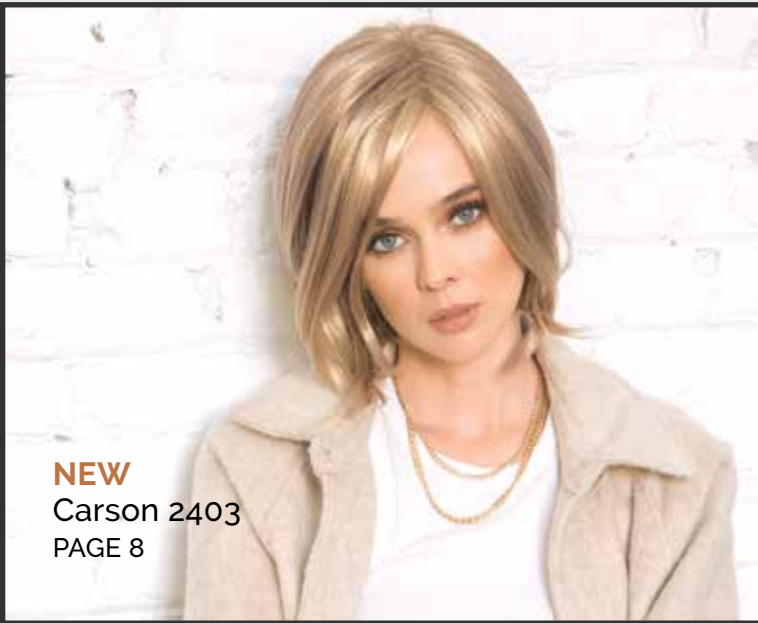
---

STYLES SHOWN (from left to right):  
Tara in Silver Stone-R, Sage in Rose Gold-R,  
Wren in Watermelon-R, Sage in Milk Tea-LR,  
Wren in Champagne-R, Carson in Maple Frost.



# RENÉ OF PARIS™

- 6 Available Colors
- 8 New Styles
- 16 Wigs
- 42 Halos
- 44 Top Pieces
- 46 Accessories



**NEW**  
Carson 2403  
PAGE 8



**NEW**  
Sage 2400  
PAGE 10

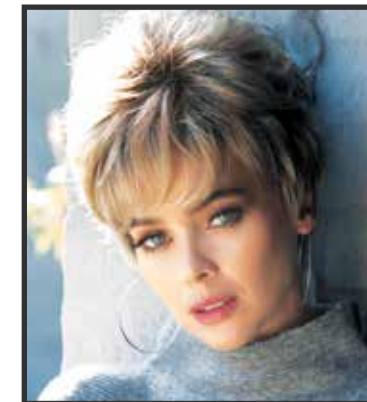


**NEW**  
Tara 2402  
PAGE 12



**NEW**  
Wren 2401  
PAGE 14

- 16 ADELINE 2389
- 17 AMAL 2371
- 18 ANASTASIA 2388
- 19 AUDREY 2350
- 19 BAILEY 2346
- 20 CAMERON 2362
- 21 CHEYENNE 2391



- 25 INDIA 2390
- 26 JADE 2313
- 27 JOEY 2325
- 28 KAI 2383
- 28 KOURTNEY 2367
- 29 LAINE 2317
- 29 LAYLA 2394
- 30 LENNOX 2395
- 30 LIZZY 2347
- 31 MAX 2397
- 31 MISHA 2363

- 22 COCO 2318
- 23 DAKOTA 2387
- 23 EVANNA 2378
- 24 FELICITY 2353
- 24 GIA 2359



- 32 NAKIA 2393
- 33 NOLAN 2399
- 34 NICO 2392
- 34 RAE 2386
- 35 RYLEE 2384
- 35 RINA 23841
- 36 SAMY 2340
- 37 SHANNON 2342
- 38 SHANE 2398
- 38 SIERRA 2328
- 39 TORI 2356

- 40 TYLER 2341
- 41 WYATT 2396
- 41 ZOE 2349
- 42 LONG HALO 737
- 43 HALO BOB 736
- 43 ROP HALO 733
- 43 WAVY BOB HALO 738
- 44 LONG TP 732
- 44 MEDIUM TP 731
- 45 NEW ADDITION 770
- 45 EVANNA TP 771
- 45 MODERN TP 772



# AVAILABLE COLORS

## BRUNETTES



Black Espresso Cappuccino Dark Chocolate Blueberry Burst Caramel Brown Chocolate Frost Mocha Brown Coffee Latte



Java Frost Ginger Brown Toasted Brown Medium Brown Iced Mocha Light Chocolate Almond Rocka Marble Brown Maple Sugar

## HYBRANT BRUNETTES



Coffee Latte-R Chocolate Frost-R Marble Brown-R Iced Mocha-R Almond Rocka-R Maple Sugar-R **NEW** Maple Frost Honey Brown-R

## BLONDS

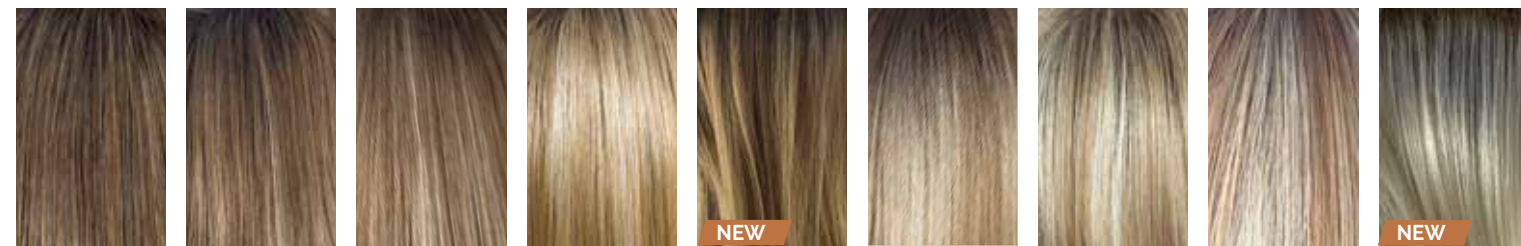


Honey Wheat Mochaccino Butter Pecan Harvest Gold Vanilla Bean Chai Cream Creamy Toffee Strawberry Swirl Frosti Blond



Ice Blond Spring Honey/ Spring Honey-T Vanilla Lush Caramel Cream Gold Blond Sugar Cane Creamy Blond Peach Gold Platinum Pearl

## HYBRANT BLONDS



Mochaccino-R Honey Wheat-R Spring Honey-R Creamy Toffee-R **NEW** Desert Sand-R Rose Gold-R Sugar Cane-R Nutmeg-R/F **NEW** Seashell Blond-R

## REDS



Champagne-R **NEW** Milky Opal-R Burgundy Rosa Garnet Glaze Red Pepper Cayenne Spice Rusty Red Red Brown Auburn Sugar



Chestnut Ginger Highlight Raspberry Ice Irish Spice Coconut Spice Copper Glaze Apricot Frost Honeycomb Brown

## HYBRANT UNDERLIGHTS



Honeycomb Brown

## HYBRANT REDS



Plumberry Jam-R **NEW** Shaded Amber Raspberry Ice-R Almond Spice-R Auburn Sugar-R Midnite Pearl Sandy Silver™ Silver Stone™ 60

## GRAYS



Midnite Pearl Sandy Silver™ Silver Stone™ 60

## HYBRANT GRAYS



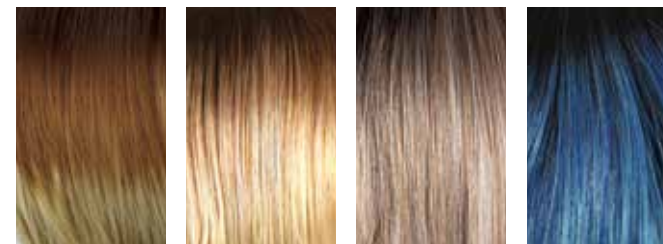
Smoky Gray-R Illumina-R Moonstone **NEW** Silver Stone-R Watermelon-R Pastel Pink Pastel Rainbow-R Pastel Blue-R Snowy Sapphire-R

## PASTELS



Watermelon-R Pastel Pink Pastel Rainbow-R Pastel Blue-R Snowy Sapphire-R

## MELTED



Melted Coconut Melted Sunset Melted Marshmallow Melted Ocean

## MELTED COLORS

Melt into the new year with our dazzling gradient tones. Modern, natural salon-like finish. Now available in 4 contemporary colors.

## LR COLORS (LONG ROOTED)

Offer a dramatic ombré style root with a gradual lightening toward the ends.

## LR BLONDS



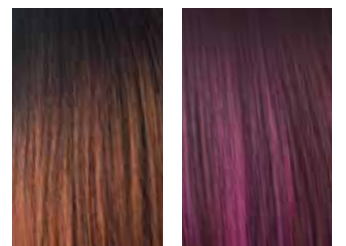
Mochaccino-LR Macadamia-LR Banana Split-LR Creamy Toffee-LR

## LR BRUNETTES



Marble Brown-LR Kandy Brown-LR Milk Tea-LR

## LR REDS



Crimson-LR Plumberry Jam-LR





## Carson 2403

A mid length bob with slight movement that frames the face beautifully.

Cap Construction:  
Lace front + lace part  
Fringe: 9.8" (25 cm)  
Crown: 9.8" (25 cm)  
Nape: 4.3" (11 cm)  
Weight: 3.1 oz (89 g)

**Colors Shown:**  
Spring Honey-T (left)  
Mochaccino-R (right)

**Available Colors:**  
**Brunettes:**  
Dark Chocolate  
Ginger Brown

**Hybrant Brunettes:**  
Honey Brown-R  
Marble Brown-R  
Maple Frost **NEW**

**LR Brunettes:**  
Milk Tea-LR

**Blonds:**  
Ice Blond  
Spring Honey-T

**Hybrant Blonde:**  
Champagne-R  
Seashell Blond-R **NEW**  
Desert Sand-R **NEW**  
Mochaccino-R  
Creamy Toffee-R  
Rose Gold-R

**Hybrant Reds:**  
Shaded Amber **NEW**

**Melted:**  
Melted Marshmallow

**Hybrant Grays:**  
Moonstone  
Silver Stone-R **NEW**





## Sage 2400

Long wavy style with curtain bangs that flatter your face.

**Cap Construction:**  
Lace front + lace part  
Fringe: 6" (15.2 cm)  
Crown: 15" (38.1 cm)  
Nape: 15" (38.1 cm)  
Weight: 6.05 oz (171.5 g)

**Colors Shown:**  
Shaded Amber (left) **NEW**  
Moonstone (right)

**Available Colors:**  
**Brunettes:**  
Dark Chocolate  
Ginger Brown

**Hybrant Brunettes:**  
Honey Brown-R  
Marble Brown-R

**Blonds:**  
Ice Blond

**Hybrants Blonds:**  
Mochaccino-R  
Milky Opal-R **NEW**  
Champagne-R  
Creamy Toffee-R  
Spring Honey-R  
Rose Gold-R

**LR Blonds:**  
Milk Tea-LR

**Hybrant Reds:**  
Shaded Amber **NEW**

**Hybrant Grays:**  
Moonstone

**Melted:**  
Melted Coconut  
Melted Marshmallow

**Pastels:**  
Watermelon-R  
Pastel Rainbow-R





## Tara 2402

Wavy bob that gives you that fresh out of salon look.

Cap Construction:  
Lace front + lace part  
Fringe: 9.8" (25 cm)  
Crown: 9" (23 cm)  
Nape: 1.9" (5 cm)  
Weight: 3.1 oz (89 g)

Colors Shown:  
Maple Frost (left) **NEW**  
Seashell Blond-R (right) **NEW**

Available Colors:  
**Brunettes:**  
Dark Chocolate  
Ginger Brown

**Hybrant Brunettes:**  
Honey Brown-R  
Marble Brown-R  
Maple Frost **NEW**

**LR Brunettes:**  
Milk Tea-LR

**Blonds:**  
Ice Blond  
Spring Honey-T

**Hybrant Blonde:**  
Champagne-R  
Seashell Blond-R **NEW**  
Desert Sand-R **NEW**  
Mochaccino-R  
Creamy Toffee-R  
Rose Gold-R

**Hybrant Reds:**  
Shaded Amber **NEW**

**Melted:**  
Melted Marshmallow

**Grays:**  
Hybrant Grays:  
Moonstone  
Silver Stone-R **NEW**







## Wren 2401

Long tousled beach wave with a feathered fringe.

Cap Construction:  
Machine-made  
Fringe: 4.25" (10.7 cm)  
Crown: 15" (38.1 cm)  
Nape: 17" (43.1 cm)  
Weight: 5.46 oz (154.7 g)

**Colors Shown:**  
Milky Opal-R (left) **NEW**  
Melted Coconut (right)

**Available Colors:**  
**Brunettes:**  
Dark Chocolate  
Ginger Brown

**Hybrant Brunettes:**  
Honey Brown-R  
Marble Brown-R

**Blonds:**  
Ice Blond

**Hybrants Blonds:**  
Mochaccino-R  
Milky Opal-R **NEW**  
Champagne-R  
Creamy Toffee-R  
Spring Honey-R  
Rose Gold-R  
Spring Honey-R

**LR Blonds:**  
Milk Tea-LR

**Hybrant Reds:**  
Shaded Amber **NEW**

**Hybrant Grays:**  
Moonstone

**Melted:**  
Melted Coconut  
Melted Marshmallow

**Pastels:**  
Watermelon-R  
Pastel Rainbow-R





## Amal 2371

Shaggy bob with loose romantic curls and softly layered fringe.

**Cap Construction:**  
Machine-made  
Fringe: 7.5" (19 cm)  
Crown: 10.3" (26 cm)  
Nape: 4.2" (10.5 cm)  
Weight: 3.6 oz (103 g)

**Color Shown:**  
Coffee Latte

**Available Colors:**  
**Brunettes:**  
Cappuccino  
Coffee Latte  
Ginger Brown

**Blonds:**  
Spring Honey  
Creamy Blond

**Hybrant Blonds:**  
Creamy Toffee-R

**LR Blonds:**  
Macadamia-LR

**Reds:**  
Chestnut

**Grays:**  
Silver Stone™



## Adeline 2389

Short, flirty bob with side swept fringe and tousled waves. Featuring a lace front with lace part cap.

**Cap Construction:**  
Lace front + lace part  
Fringe: 7.5" (19.05 cm)  
Crown: 11" (27.94cm)  
Nape: 4" (10.16 cm)  
Weight: 3.17 oz (90g)

**Color Shown:**  
Smoky Gray-R

**Available Colors:**  
**Brunettes:**  
Mocha Brown

**Hybrant Brunettes:**  
Honey Brown-R

**Blonds:**  
Ice Blond

**LR Blonds:**  
Creamy Toffee-LR

**Hybrant Underlights:**  
Honeycomb Brown

**LR Reds:**  
Plumberry Jam-LR

**Melted Tones:**  
Melted Sunset  
Melted Marshmallow  
Melted Ocean

**Pastels:**  
Pastel Blue-R  
Pastel Pink

**Grays:**  
Silver Stone™

**Hybrant Grays:**  
Smoky Gray-R







## Anastasia 2388

Short, jazzy bob with side swept fringe and textured layers.

Cap Construction:  
Machine-made  
Fringe: 4.5" (11.43 cm)  
Crown: 5.5 (13.97 cm)  
Nape: 3" (7.62 cm)  
Weight: 2.68 oz (76g)

**Color Shown:**  
Rusty Red

**Available Colors:**  
**Brunettes:**  
Dark Chocolate  
Caramel Brown  
Mocha Brown  
Ginger Brown

**Hybrant Brunettes:**  
Honey Brown-R  
Marble Brown-R

**Blonds:**  
Ice Blond

**Hybrant Blonds:**  
Mochaccino-R  
Spring Honey-R  
Creamy Toffee-R  
Rose Gold-R

**Reds:**  
Rusty Red

**Hybrant Reds:**  
Plumerry Jam-R

**Melted Tones:**  
Melted Sunset  
Melted Marshmallow

**Pastels:**  
Pastel Blue-R  
Pastel Pink

**Hybrant Grays:**  
Smoky Gray-R



## Audrey 2350

Smooth layered bob with angled sides.

Cap Construction:  
Machine-made  
Fringe: 4.75" (12 cm)  
Crown: 6" (15 cm)  
Nape: 2.25" (6 cm)  
Weight: 2.93 oz (83 g)

**Color Shown:**  
Nutmeg-R

**Available Colors:**  
**Brunettes:**  
Espresso  
Cappucino  
Dark Chocolate  
Coffee Latte

Ginger Brown  
Marble Brown  
Iced Mocha  
Chocolate Frost  
Toasted Brown  
Maple Sugar

**Hybrant Brunettes:**  
Iced Mocha-R  
Maple Sugar-R

**Blonds:**  
Mochaccino  
Vanilla Bean  
Spring Honey  
Creamy Toffee  
Creamy Blond

**Hybrant Blonds:**  
Mochaccino-R  
Nutmeg-R  
Creamy Toffee-R

**Reds:**  
Auburn Sugar  
Chestnut  
Copper Glaze

**Grays:**  
Sandy Silver™  
Silver Stone™

## Bailey 2346

Easy flowing layers define this trendy look.

Cap Construction:  
Machine-made  
Fringe: 3.5" (9 cm)  
Crown: 6.5" (16.5 cm)  
Nape: 6.5" (16.5 cm)  
Weight: 3.49 oz (99 g)

**Color Shown:**  
Mochaccino-R

**Available Colors:**  
**Brunettes:**  
Cappucino  
Dark Chocolate  
Coffee Latte  
Ginger Brown  
Marble Brown

Iced Mocha  
Toasted Brown  
Maple Sugar

**Hybrant Brunettes:**  
Iced Mocha-R  
Maple Sugar-R

**Blonds:**  
Butter Pecan  
Mochaccino  
Strawberry Swirl  
Vanilla Lush  
Spring Honey  
Creamy Toffee  
Creamy Blond

**Hybrant Blonds:**  
Mochaccino-R  
Nutmeg-R  
Creamy Toffee-R

**Reds:**  
Ginger Highlight  
Red Pepper  
Auburn Sugar  
Chestnut  
Irish Spice  
Copper Glaze  
Apricot Frost

**Hybrant Reds:**  
Auburn Sugar-R





## Cameron 2362

Casual movement characterizes this irresistible bob.

Cap Construction:  
Machine-made  
Fringe: 5" (13 cm)  
Crown: 6.5" (16.5 cm)  
Nape: 4" (10 cm)  
Weight: 3.21 oz (91 g)

**Color Shown:**  
Creamy Toffee

**Available Colors:**  
**Brunettes:**  
Espresso  
Cappuccino  
Dark Chocolate  
Coffee Latte  
Java Frost  
Almond Rocka  
Ginger Brown

Marble Brown  
Iced Mocha  
Chocolate Frost  
Toasted Brown  
Maple Sugar

**Hybrant Brunettes:**  
Iced Mocha-R  
Maple Sugar-R

**Blonds:**  
Mochaccino  
Honey Wheat  
Chai Cream  
Spring Honey  
Sugar Cane  
Creamy Toffee  
Creamy Blond

**Hybrant Blonds:**  
Mochaccino-R  
Nutmeg-R  
Creamy Toffee-R

**Reds:**  
Cayenne Spice  
Auburn Sugar  
Razberry Ice  
Chestnut  
Copper Glaze  
Coconut Spice

**Hybrant Reds:**  
Auburn Sugar-R



## Cheyenne 2391

Sleek shoulder length blunt cut bob. Featuring a lace front with lace part cap.

Cap Construction:  
Lace front + lace part  
Fringe: 13" (33.02cm)  
Crown: 14" (35.56)  
Nape: 5" (12.7cm)  
Weight: 4.76 oz (135g)

**Color Shown:**  
Honey Brown-R

**Available Colors:**  
**Brunettes:**  
Dark Chocolate  
Caramel Brown  
Mocha Brown  
Ginger Brown

**Hybrant Brunettes:**  
Honey Brown-R

**LR Brunettes:**  
Marble Brown-LR

**Blonds:**  
Ice Blond

**Hybrant Blonds:**  
Spring Honey-R  
Rose Gold-R

**LR Blonds:**  
Mochaccino-LR  
Creamy Toffee-LR

**Hybrant Underlights:**  
Honeycomb Brown

**Reds:**  
Rusty Red

**LR Reds:**  
Plumberry Jam-LR

**Melted Tones:**  
Melted Sunset  
Melted Marshmallow  
Melted Ocean

**Pastels:**  
Pastel Blue-R  
Pastel Pink  
Pastel Rainbow-R

**Grays:**  
Silver Stone™

**Hybrant Grays:**  
Smoky Gray-R





## COCO 2318

A carefree style with charming texture.

**Cap Construction:**  
Machine-made  
Fringe: 4" (10 cm)  
Crown: 5" (12.5 cm)  
Nape: 2" (5 cm)  
Weight: 2.58 oz (73 g)

**Color Shown:**  
Dark Chocolate

**Available Colors:**

**Brunettes:**  
Dark Chocolate  
Coffee Latte  
Ginger Brown  
Marble Brown  
Iced Mocha  
Maple Sugar

**Hybrant Brunettes:**  
Iced Mocha-R  
Maple Sugar-R

**Blonds:**  
Harvest Gold  
Mochaccino  
Frosti Blond  
Vanilla Lush  
Caramel Cream  
Spring Honey  
Creamy Toffee  
Creamy Blond

**Hybrant Blonds:**  
Mochaccino-R  
Nutmeg-R  
Creamy Toffee-R

**Reds:**  
Auburn Sugar  
Chestnut  
Copper Glaze

**Hybrant Reds:**  
Auburn Sugar-R

**Grays:**  
Silver Stone™



## Dakota 2387

Sleek medium length style with razored layers that frame the face and a long side swept fringe.

**Cap Construction:**  
Lace front + lace part  
Fringe: 8" (20.3 cm)  
Crown: 14" (35.6 cm)  
Nape: 11" (28 cm)  
Weight: 4.03 oz (114 g)

**Color Shown:**  
Pastel Pink

**Available Colors:**  
**Brunettes:**  
Mocha Brown  
Ginger Brown

**LR Brunettes:**  
Marble Brown-LR

**Blonds:**  
Ice Blond

**Hybrant Blonds:**  
Rose Gold-R  
Spring Honey-R

**LR Blonds:**  
Mochaccino-LR

**LR Reds:**  
Plumbrery Jam-LR

**Melted Tones:**  
Melted Marshmallow

**Pastels:**  
Pastel Blue-R  
Pastel Pink



## Evanna 2378

Salon finish beach wave curls fall shoulder length in this trendy bob.

**Cap Construction:**  
Lace front + monopart  
Fringe: 11.5" (29.2 cm)  
Crown: 11.5" (29.2 cm)  
Nape: 5.5" (14 cm)  
Weight: 3.56 oz (101 g)

**Color Shown:**  
Champagne-R

**Available Colors:**  
**Brunettes:**  
Mocha Brown  
Ginger Brown  
Caramel Brown  
Dark Chocolate

**LR Brunettes:**  
Marble Brown-LR

**Hybrant Under Lights:**  
Honeycomb Brown

**Blonds:**  
Ice Blond

**Hybrant Blonds:**  
Rose Gold-R  
Champagne-R

**LR Blonds:**  
Mochaccino-LR  
Creamy Toffee-LR

**Reds:**  
Rusty Red

**LR Reds:**  
Plumbrery Jam-LR

**Melted Tones:**  
Melted Sunset  
Melted Marshmallow  
Melted Ocean

**Pastels:**  
Pastel Blue-R  
Pastel Pink  
Pastel Rainbow-R





## Felicity 2353

A luxurious look with layered soft waves.

Cap Construction:  
Machine-made  
Fringe: 5.25" (13.5 cm)  
Crown: 10" (25.5 cm)  
Nape: 14" (35.25 cm)  
Weight: 4.48 oz (127 g)

**Color Shown:**  
Auburn Sugar

**Available Colors:**

**Brunettes:**  
Cappucino  
Dark Chocolate  
Coffee Latte  
Ginger Brown  
Marble Brown  
Iced Mocha  
Toasted Brown  
Maple Sugar

**Blonds:**  
Mochaccino  
Vanilla Lush  
Spring Honey  
Creamy Toffee

**Reds:**  
Ginger Highlight  
Auburn Sugar  
Chestnut  
Copper Glaze  
Irish Spice



## Gia 2359

A chic tapered look with effortless elegance.

Cap Construction:  
Machine-made  
Fringe: 6" (15 cm)  
Crown: 3.25" (8.5 cm)  
Nape: 2" (5 cm)  
Weight: 2.26 oz (64 g)

**Color Shown:**  
Champagne-R

**Available Colors:**

**Brunettes:**  
Dark Chocolate  
Coffee Latte  
Chocolate Frost  
Almond Rocka  
Ginger Brown  
Marble Brown  
Iced Mocha  
Maple Sugar

**Hybrant Brunettes:**  
Marble Brown-R  
Maple Sugar-R

**Blonds:**  
Mochaccino  
Honey Wheat  
Chai Cream  
Spring Honey  
Sugar Cane  
Creamy Toffee  
Creamy Blond

**Hybrant Blonds:**  
Champagne-R  
Mochaccino-R  
Creamy Toffee-R

**Reds:**  
Cayenne Spice  
Auburn Sugar  
Razberry Ice  
Chestnut  
Copper Glaze  
Coconut Spice

**Grays:**  
Sandy Silver™  
Silver Stone™



## India 2390

Add volume with this beautiful shoulder length style with side swept fringe and loose wavy layers.

Cap Construction:  
Lace front + lace part  
Fringe: 10" (25.4cm)  
Crown: 10" (25.4cm)  
Nape: 9" (22.86cm)  
Weight: 3.77 (107g)

**Color Shown:**  
Pastel Blue-R

**Available Colors:**

**Brunettes:**  
Caramel Brown  
Mocha Brown

**Hybrant Brunettes:**  
Honey Brown-R

**LR Brunettes:**  
Marble Brown-LR

**Blonds:**  
Ice Blond

**Hybrant Blonds:**  
Spring Honey-R

**LR Blonds:**  
Creamy Toffee-LR  
Mochaccino-LR

**Reds:**  
Rusty Red

**LR Reds:**  
Plumberry Jam-LR

**Hybrant Grays:**  
Smoky Gray-R

**Hybrant Underlights:**  
Honeycomb Brown

**Melted Tones:**  
Melted Sunset  
Melted Marshmallow  
Melted Ocean

**Pastels:**  
Pastel Pink  
Pastel Blue-R







## Jade 2313

Feathery layers lend a "retro" finish to a classic shoulder length cut.

Cap Construction:  
Machine-made  
Fringe: 5.5" (14 cm)  
Crown: 8" (20.5 cm)  
Nape: 9" (23 cm)  
Weight: 3.99 oz (113 g)

**Color Shown:**  
Iced Mocha

**Available Colors:**

**Brunettes:**  
Espresso  
Dark Chocolate  
Coffee Latte  
Ginger Brown  
Marble Brown  
Iced Mocha  
Maple Sugar

**Blonds:**

Harvest Gold  
Mochaccino  
Vanilla Lush  
Vanilla Bean  
Spring Honey  
Creamy Toffee  
Creamy Blond



## Joey 2325

A free-spirited mix of textured curls that can be tamed or tousled.

Cap Construction:  
Open Top Aero-Light Cap  
Fringe: 3.75" (9.5 cm)  
Crown: 4" (10 cm)  
Nape: 3.25" (8 cm)  
Weight: 2 oz (56 g)

**Color Shown:**  
Spring Honey

**Available Colors:**

**Brunettes:**  
Dark Chocolate  
Ginger Brown  
Marble Brown  
Toasted Brown  
Maple Sugar

**Blonds:**

Harvest Gold  
Frosti Blond  
Strawberry Swirl  
Spring Honey  
Creamy Toffee

**Grays:**

Sandy Silver™  
Silver Stone™

*Aero-Light*  
Cap





## Kai 2383

Sharp, blunt cut bob for sleek sophistication.

Cap Construction:  
Lace front + lace part  
Fringe: 11" (28 cm)  
Crown: 12" (30.5 cm)  
Nape: 2.25" (5.7 cm)  
Weight: 3.53 oz (100 g)

**Color Shown:**  
Melted Ocean

**Available Colors:**  
**Brunettes:**  
Mocha Brown  
Ginger Brown  
Dark Chocolate

**LR Brunettes:**  
Marble Brown-LR

**Blonds:**  
Ice Blond

**Hybrant Blonds:**  
Rose Gold-R  
Spring Honey-R  
Nutmeg-R

**LR Blonds:**  
Mochaccino-LR  
Creamy Toffee-LR

**LR Reds:**  
Plumberry Jam-LR

**Melted Tones:**  
Melted Sunset  
Melted Marshmallow  
Melted Ocean

**Pastels:**  
Pastel Blue-R  
Pastel Pink

**Grays:**  
Silver Stone™



## Kourtney 2367

Bouncy layers enhance femininity and style versatility.

Cap Construction:  
Machine-made  
Fringe: 5.25" (13.5 cm)  
Crown: 9" (23 cm)  
Nape: 7.75" (19.5 cm)  
Weight: 3.4 oz (97 g)

**Color Shown:**  
Spring Honey

**Available Colors:**  
**Brunettes:**  
Cappuccino  
Dark Chocolate  
Coffee Latte  
Java Frost  
Ginger Brown  
Marble Brown  
Toasted Brown

**Blonds:**  
Mochaccino  
Honey Wheat  
Spring Honey  
Sugar Cane  
Creamy Toffee  
Creamy Blond

**Reds:**  
Auburn Sugar  
Chestnut



## Laine 2317

Soft layers with razored edges flatters this classic design.

Cap Construction:  
Machine-made  
Fringe: 9" (23 cm)  
Crown: 14" (35.5 cm)  
Nape: 9" (23 cm)  
Weight: 4.83 oz (137 g)

**Color Shown:**  
Almond Spice-R

**Available Colors:**  
**Brunettes:**  
Espresso  
Cappuccino  
Coffee Latte  
Ginger Brown  
Marble Brown  
Maple Sugar

**Hybrant Brunettes:**  
Iced Mocha-R

**Blonds:**  
Mochaccino  
Spring Honey  
Creamy Toffee  
Creamy Blond

**Hybrant Blonds:**  
Honey Wheat-R  
Creamy Toffee-R

**Reds:**  
Chestnut

**Hybrant Reds:**  
Almond Spice-R

## Layla 2394

Complete your look with this gorgeous and dimensional beach wave style.

Cap Construction:  
Lace front + lace part  
Fringe: 15.5" (39.4cm)  
Crown: 17.5" (44.5cm)  
Nape: 13" (33 cm)  
Weight: 5.33 oz (151g)

**Color Shown:**  
Rose Gold-R

**Available Colors:**  
**Brunettes:**  
Caramel Brown  
Dark Chocolate  
Ginger Brown  
Mocha Brown

**Hybrant Brunettes:**  
Honey Brown-R

**LR Brunettes:**  
Marble Brown-LR  
Milk Tea-LR

**Hybrant Underlights:**  
Honeycomb Brown

**Blonds:**  
Ice Blond

**Hybrant Blonds:**  
Spring Honey-R  
Rose Gold-R

**LR Blonds:**  
Creamy Toffee-LR  
Mochaccino-LR

**Melted:**  
Melted Marshmallow  
Melted Sunset

**Reds:**  
Rusty Red

**LR Reds:**  
Plumberry Jam-LR

**Pastels:**  
Pastel Blue-R  
Pastel Pink  
Pastel Rainbow-R

**Hybrant Grays:**  
Smoky Gray-R





## Lennox 2395

Create a trendy look with this timeless, long layered style with natural feathered ends.

Cap Construction:  
Lace front + lace part  
Fringe: 13" (33cm)  
Crown: 18" (45.7 cm)  
Nape: 16.5" (42 g)  
Weight: 6.38 oz (181 g)

**Color Shown:**  
Pastel Rainbow-R

**Available Colors:**  
**Brunettes:**  
Dark Chocolate  
Ginger Brown  
Mocha Brown

**LR Brunettes:**  
Marble Brown-LR  
Milk Tea-LR

**Hybrant Underlights:**  
Honeycomb Brown

**Blonds:**  
Ice Blond

**Hybrant Blonds:**  
Spring Honey-R  
Rose Gold-R

**LR Blonds:**  
Creamy Toffee-LR  
Mochaccino-LR

**LR Reds:**  
Plumberry Jam-LR

**Melted:**  
Melted Marshmallow

**Pastels:**  
Pastel Pink  
Pastel Rainbow-R



## Lizzy 2347

Short and saucy with razor finished layers. Just spike it up and go!

Cap Construction:  
Machine-made  
Fringe: 3.5" (9 cm)  
Crown: 3.5" (9 cm)  
Nape: 2" (5 cm)  
Weight: 2.01 oz (57 g)

**Color Shown:**  
Maple Sugar

**Available Colors:**  
**Brunettes:**  
Espresso  
Coffee Latte  
Ginger Brown  
Marble Brown  
Iced Mocha  
Toasted Brown  
Maple Sugar

**Hybrant Brunettes:**  
Iced Mocha-R  
Maple Sugar-R

**Blonds:**  
Harvest Gold  
Mochaccino  
Strawberry Swirl  
Spring Honey  
Creamy Blond

**Hybrant Blonds:**  
Mochaccino-R  
Nutmeg-R  
Creamy Toffee-R

**Reds:**  
Burgundy Rosa  
Ginger Highlight  
Auburn Sugar  
Razberry Ice  
Chestnut  
Copper Glaze

**Grays:**  
Silver Stone™



## Max 2397

Soft wave, tapered short style. Customized volume with a contemporary twist.

Cap Construction:  
Lace front + lace part  
Fringe: 5.5" (14 cm)  
Crown: 5.5" (14 cm)  
Nape: 1.75" (4.4 cm)  
Weight: 2.4 oz (69 g)

**Color Shown:**  
Snowy Sapphire-R

**Available Colors:**  
**Brunettes:**  
Dark Chocolate  
Medium Brown

**Hybrant Brunettes:**  
Marble Brown-R

**Blonds:**  
Ice Blond

**Hybrant Blonds:**  
Spring Honey-R  
Rose Gold-R  
Creamy Toffee-R  
Mochaccino-R

**Melted:**  
Melted Marshmallow

**Pastels:**  
Watermelon-R

**Grays:**  
Silver Stone™

**Hybrant Grays:**  
Snowy Sapphire-R



## Misha 2363

Long tresses with fringe are both timeless and flattering.

Cap Construction:  
Machine-made  
Fringe: 4.25" (11 cm)  
Crown: 9.75" (25 cm)  
Nape: 11.5" (29.5 cm)  
Weight: 5.11 oz (145 g)

**Color Shown:**  
Chestnut

**Available Colors:**  
**Brunettes:**  
Espresso  
Cappucino  
Dark Chocolate  
Coffee Latte  
Java Frost  
Almond Rocka  
Ginger Brown  
Maple Sugar

**Blonds:**  
Mochaccino  
Chai Cream  
Spring Honey  
Creamy Toffee  
Creamy Blond

**Reds:**  
Garnet Glaze  
Chestnut  
Coconut Spice





## Nakia 2393

Natural soft waves which soften face lines and are flattering for everyone.

Cap Construction:  
Machine-made  
Fringe: 4.5" (11.4cm)  
Crown: 13" (33 cm)  
Nape: 10" (25.4 cm)  
Weight: 4.16 oz (118 g)

**Colors Shown:**  
Milk Tea-LR (left)  
Dark Chocolate (right)

**Available Colors:**  
**Brunettes:**  
Caramel Brown  
Dark Chocolate  
Ginger Brown  
Mocha Brown

**Hybrant Brunettes:**  
Honey Brown-R

**LR Brunettes:**  
Marble Brown-LR  
Milk Tea-LR

**Hybrant Underlights:**  
Honeycomb Brown

**Blonds:**  
Ice Blond

**Hybrant Blonds:**  
Spring Honey-R  
Rose Gold-R

**LR Blonds:**  
Creamy Toffee-LR  
Mochaccino-LR

**Reds:**  
Rusty Red

**LR Reds:**  
Plumberry Jam-LR

**Melted:**  
Melted Marshmallow  
Melted Sunset

**Pastels:**  
Pastel Blue-R  
Pastel Pink  
Pastel Rainbow-R

**Hybrant Grays:**  
Smoky Gray-R

## Nolan 2399

Silky smooth, salon finish straight. Pull off an instantly stunning appearance.

Cap Construction:  
Lace Front + lace part  
Fringe: 9.8-11" (25-28 cm)  
Crown: 13" (33 cm)  
Nape: 13.8" (35 cm)  
Weight: 4.9-5.3 oz (140-150 g)

**Colors Shown:**  
Milk Tea-LR (left)  
Dark Chocolate (right)

**Available Colors:**  
**Brunettes:**  
Dark Chocolate  
Coffee Latte

**Hybrant Brunettes:**  
Marble Brown-R

**LR Brunettes:**  
Milk Tea-LR  
Candy Brown-LR

**Blonds:**  
Spring Honey-T  
Creamy Blond  
Peach Gold

**Hybrant Blonds:**  
Rose Gold-R  
Mochaccino-R  
Nutmeg-R  
Champagne-R  
Creamy Toffee-R

**Reds:**  
Red Brown

**Hybrant Reds:**  
Auburn Sugar-R

**LR Reds:**  
Plumberry Jam-LR

**Hybrant Grays:**  
Moonstone

**Melted:**  
Melted Marshmallow  
Melted Coconut

**Pastels:**  
Watermelon-R





## Nico 2392

A sleek and effortless chin-length bob style for all face shapes

**Cap Construction:**  
Machine-made  
Fringe: 3.25" (8.26cm)  
Crown: 11" (28 cm)  
Nape: 2" (5.1 cm)  
Weight: 3.53 oz (100 g)

**Color Shown:**  
Smoky Gray-R

**Available Colors:**  
**Brunettes:**  
Dark Chocolate  
Ginger Brown  
Mocha Brown

**Hybrant Brunettes:**  
Marble Brown-R

**Blonds:**  
Ice Blond

**Hybrant Blonds:**  
Spring Honey-R  
Rose Gold-R  
Creamy Toffee-R  
Mochaccino-R

**Melted:**  
Melted Marshmallow

**LR Reds:**  
Plumberry Jam-LR

**Pastels:**  
Pastel Blue-R  
Pastel Pink  
Pastel Rainbow-R

**Grays:**  
Silver Stone™

**Hybrant Grays:**  
Smoky Gray-R



## Rae 2386

Sexy a-line cut with tapered nape and loose wavy layers that frame the face to the chin.

**Cap Construction:**  
Lace front + lace part  
Fringe: 8.5" (21.6 cm)  
Crown: 7.5" (19.05 cm)  
Nape: 3" (7.62 cm)  
Weight: 2.93 oz (83 g)

**Color Shown:**  
Plumberry Jam-LR

**Available Colors:**  
**Brunettes:**  
Mocha Brown  
Ginger Brown

**Hybrant Underlight:**  
Honeycomb Brown

**LR Brunettes:**  
Marble Brown-LR

**Blonds:**  
Ice Blond

**Hybrant Blonds:**  
Rose Gold-R  
Spring Honey-R

**LR Blonds:**  
Mochaccino-LR  
Creamy Toffee-LR

**LR Reds:**  
Plumberry Jam-LR

**Melted Tones:**  
Melted Marshmallow

**Pastels:**  
Pastel Blue-R  
Pastel Pink  
Pastel Rainbow-R

**Grays:**  
Silver Stone™



## Rylee 2384

Lusciously long, wavy locks fall alluringly towards the waist while long layers add beautiful dimension and movement to this stunningly sexy style.

**Cap Construction:**  
Lace front + lace part  
Fringe: 14" (35.6 cm)  
Crown: 16" (40.6cm)  
Nape: 20" (50.8 cm)  
Weight: 5.23 oz (148 g)

**Color Shown:**  
Mochaccino-LR

**Available Colors:**  
**Brunettes:**  
Mocha Brown  
Ginger Brown

**Hybrant Underlight:**  
Honeycomb Brown

**LR Brunettes:**  
Marble Brown-LR

**Blonds:**  
Ice Blond

**Hybrant Blonds:**  
Rose Gold-R

**LR Blonds:**  
Mochaccino-LR  
Creamy Toffee-LR

**LR Reds:**  
Plumberry Jam-LR

**Melted Tones:**  
Melted Marshmallow

**Pastels:**  
Pastel Pink  
Pastel Rainbow-R



## Rina 2381

Feathery layers with graduated back and soft wispy fringe.

**Cap Construction:**  
Machine-made  
Fringe: 4" (10.2 cm)  
Crown: 4" (10.2 cm)  
Nape: 2" (5.1 cm)  
Weight: 2.19 oz (62 g)

**Color Shown:**  
Rose Gold-R

**Available Colors:**  
**Brunettes:**  
Mocha Brown  
Ginger Brown  
Caramel Brown

**Blonds:**  
Ice Blond

**Hybrant Blonds:**  
Mochaccino-R  
Creamy Toffee-R  
Rose Gold-R

**Reds:**  
Rusty Red

**Grays:**  
Silver Stone™





## Samy 2340

A spiky, short cut with tapered nape and sides.

Cap Construction:  
Machine-made  
Fringe: 4" (10 cm)  
Crown: 4" (10 cm)  
Nape: 2" (5 cm)  
Weight: 2.15 oz (61 g)

**Color Shown:**  
60

**Available Colors:**

**Brunettes:**  
Dark Chocolate  
Coffee Latte  
Ginger Brown  
Marble Brown  
Iced Mocha  
Toasted Brown  
Maple Sugar

**Blonds:**  
Frosti Blond  
Mochaccino  
Vanilla Bean  
Spring Honey  
Creamy Toffee

**Reds:**  
Copper Glaze

**Grays:**  
Sandy Silver™  
Silver Stone™  
60



## Shannon 2342

A structured chin length bob with tapered ends.

Cap Construction:  
Machine-made  
Fringe: 4.5" (11.5 cm)  
Crown: 7.5" (19 cm)  
Nape: 4" (10 cm)  
Weight: 3.17 oz (90 g)

**Color Shown:**  
Creamy Blond

**Available Colors:**

**Brunettes:**  
Espresso  
Cappuccino  
Dark Chocolate  
Coffee Latte  
Ginger Brown  
Marble Brown  
Medium Brown  
Toasted Brown  
Maple Sugar  
Light Chocolate

**Blonds:**  
Mochaccino  
Strawberry Swirl  
Spring Honey  
Creamy Toffee  
Creamy Blond

**Reds:**  
Ginger Highlight  
Razberry Ice







## Shane 2398

Cheek length, A-line bob. Natural volume on crown achieves a pleasant silhouette.

**Cap Construction:**  
Lace front + lace part  
Fringe: 6.5" (16.5 cm)  
Crown: 5.5" (14 cm)  
Nape: 1" (2.5 cm)  
Weight: 2.6 oz (74 g)

**Color Shown:**  
Melted Marshmallow

**Available Colors:**  
**Brunettes:**  
Dark Chocolate  
Ginger Brown  
Medium Brown

**Hybrant Brunettes:**  
Marble Brown-R

**LR Brunettes:**  
Milk Tea-LR

**Blonds:**  
Ice Blond

**Hybrant Blonds:**  
Spring Honey-R  
Rose Gold-R  
Mochaccino-R  
Creamy Toffee-R

**Melted:**  
Melted Marshmallow

**LR Reds:**  
Plumberry Jam-LR

**Pastels:**  
Pastel Rainbow-R  
Watermelon-R

**Grays:**  
Silver Stone™



## Sierra 2328

A buoyant arrangement of tousled texture and body.

**Cap Construction:**  
Open Top Aero-Light Cap  
Fringe: 5" (12.5 cm)  
Crown: 3.5" (9 cm)  
Nape: 3.5" (9 cm)  
Weight: 2.22 oz (63 g)

**Color Shown:**  
Toasted Brown

**Available Colors:**  
**Brunettes:**  
Dark Chocolate  
Coffee Latte  
Ginger Brown  
Marble Brown  
Iced Mocha  
Toasted Brown

*Aero-Light*  
Cap

**Blonds:**  
Harvest Gold  
Mochaccino  
Frosti Blond  
Strawberry Swirl  
Spring Honey  
Creamy Toffee

**Reds:**  
Auburn Sugar  
Chestnut



## Tori 2356

A striking angled bob with blunt fringe.

**Cap Construction:**  
Machine-made  
Fringe: 4" (10 cm)  
Crown: 7" (17.5 cm)  
Nape: 2" (5 cm)  
Weight: 3 oz (85 g)

**Color Shown:**  
Toasted Brown

**Available Colors:**  
**Brunettes:**  
Black  
Espresso  
Cappuccino  
Dark Chocolate  
Coffee Latte  
Ginger Brown

Marble Brown  
Iced Mocha  
Chocolate Frost  
Toasted Brown  
Maple Sugar

**Hybrant Brunettes:**  
Iced Mocha-R  
Maple Sugar-R

**Blonds:**  
Butter Pecan  
Mochaccino  
Strawberry Swirl  
Vanilla Lush  
Spring Honey  
Creamy Toffee  
Creamy Blond

**Hybrant Blonds:**  
Mochaccino-R  
Nutmeg-R  
Creamy Toffee-R

**Reds:**  
Ginger Highlight  
Auburn Sugar  
Razberry Ice  
Chestnut  
Irish Spice  
Copper Glaze

**Hybrant Reds:**  
Auburn Sugar-R





## Tyler 2341

Tapered layers and flipped ends combine to create a sophisticated style.

Cap Construction:  
Open Top Aero-Light Cap  
Fringe: 3.5" (9 cm)  
Crown: 3.5" (9 cm)  
Nape: 2.25" (5.5 cm)  
Weight: 2.01 oz (57 g)

**Color Shown:**  
Coffee Latte

**Available Colors:**  
**Brunettes:**  
Dark Chocolate  
Coffee Latte  
Ginger Brown  
Marble Brown  
Iced Mocha  
Maple Sugar

**Blonds:**  
Harvest Gold  
Mochaccino  
Strawberry Swirl  
Spring Honey  
Creamy Toffee  
Creamy Blond

**Reds:**  
Ginger Highlight  
Auburn Sugar  
Copper Glaze

**Grays:**  
Silver Stone™  
60

*Aero-Light  
Cap*



## Wyatt 2396

Chin length textured bob with a trendy, side swept fringe. This modern style creates natural volume and movement.

Cap Construction:  
Machine-made  
Fringe: 5" (12.7 cm)  
Crown: 9" (23 cm)  
Nape: 3" (7.6 cm)  
Weight: 3.0 oz (84 g)

**Color Shown:**  
Watermelon-R

**Available Colors:**  
**Brunettes:**  
Dark Chocolate  
Ginger Brown  
Medium Brown

**LR Brunettes:**  
Marble Brown-LR  
Milk Tea-LR

**Blonds:**  
Ice Blond

**Hybrant Blonds:**  
Spring Honey-R  
Rose Gold-R

**LR Blonds:**  
Creamy Toffee-LR  
Mochaccino-LR

**Melted:**  
Melted Marshmallow  
Melted Coconut

**LR Reds:**  
Plumberry Jam-LR

**Pastels:**  
Pastel Rainbow-R  
Watermelon-R

**Grays:**  
Silver Stone™

**Hybrant Grays:**  
Snowy Sapphire-R



## Zoe 2349

A modern pixie enhanced by multiple layers and textures.

Cap Construction:  
Machine-made  
Fringe: 3.5" (9 cm)  
Crown: 3.25" (8.5 cm)  
Nape: 2" (5 cm)  
Weight: 1.8 oz (51 g)

**Color Shown:**  
Midnite Pearl

**Available Colors:**  
**Brunettes:**  
Dark Chocolate  
Coffee Latte  
Ginger Brown  
Marble Brown  
Iced Mocha  
Maple Sugar

**Blonds:**  
Harvest Gold  
Mochaccino  
Strawberry Swirl  
Spring Honey  
Creamy Blond

**Reds:**  
Ginger Highlight  
Auburn Sugar

**Grays:**  
Midnight Pearl  
Sandy Silver™  
Silver Stone™  
60





## HALO COLLECTION

Comfy, light and stylish Halos were designed to be worn under a hat, scarf or wrap. A detachable fringe gives you a choice to change up your look to complement any outfit. A great alternative to a full wig.

### Long Halo 737

Our popular long style is now available in Halo! Use it as a regular Halo or as an alternative way to change your look for a day.

Overall: 16.1" (41 cm)  
Weight: 3.7 oz (104 g)

\*Detachable bangs  
\*Turban not included

**Color Shown:**  
Dark Chocolate

**Turban shown:**  
1011-0255 Mantra  
Long Scarf

**Available Colors:**  
**Brunettes:**  
Cappucino  
Dark Chocolate  
Ginger Brown  
Maple Sugar  
Marble Brown  
Toasted Brown  
Honey Brown

**Hybrant Brunettes:**  
Marble Brown-R

**Blonds:**  
Creamy Blond  
Creamy Toffee  
Mochaccino  
Spring Honey



Circumference: 53.5 cm



### Halo Bob 736

A refreshingly original halo hair piece complete with chin length layers and a detachable fringe.

Overall: 10" (24.4 cm)  
Weight: 2.9 oz (82 g)  
\*Detachable Bangs  
\*Turban not included

**Color Shown:**  
Creamy Blond

**Available Colors:**  
**Brunettes:**  
Cappucino  
Dark Chocolate  
Coffee Latte  
Ginger Brown

Marble Brown  
Toasted Brown  
Maple Sugar

**Blonds:**  
Mochaccino  
Spring Honey  
Creamy Toffee  
Creamy Blond

**Reds:**  
Coconut Spice



Circumference: 53.5 cm

### ROP Halo 733

A comfy and stylish Halo with detachable fringe. Can be worn under a hat or scarf to complement any outfit!

Overall: 14" (35.5 cm)  
Weight: 2.9 oz (82 g)

\*Detachable bangs  
\*Turban not included

**Color Shown:**  
Toasted Brown

**Available Colors:**  
**Brunettes:**  
Cappucino  
Dark Chocolate  
Ginger Brown  
Marble Brown  
Toasted Brown  
Maple Sugar

**Blonds:**  
Mochaccino  
Spring Honey  
Creamy Toffee



Circumference: 53.5 cm

### Wavy Bob Halo 738

This soft wave bob compliments your face and neck line with a stylish look.

Overall: 10" (3.9 cm)  
Weight: 2.5 oz (72 g)

\*Detachable bangs  
\*Hat not included

**Color Shown:**  
Honey Brown

**Turban shown (inset):**  
2102-0335 Lotus Turban - Printed

**Available Colors:**  
**Brunettes:**  
Cappucino  
Dark Chocolate  
Ginger Brown  
Maple Sugar  
Marble Brown  
Toasted Brown

**Hybrant Brunettes:**  
Honey Brown

**Blonds:**  
Creamy Blond  
Creamy Toffee  
Mochaccino  
Spring Honey



Circumference: 53.5 cm





## HAIR ENHANCEMENT

Boost your confidence and look your best. Our quality hair enhancements are designed to create instant transformation that will make you shine.

Light, breathable base constructions matched with touchable hair in a variety of beautifully rich colors provide the ultimate versatility and comfort.

### Long TP 732

Adds long luxurious coverage from the fringe to the crown.

**Base Construction:**  
Machine-made  
Hair Length: 18" (45.5 cm)  
Weight: 2.5 oz (70 g)

**Color Shown:**  
Iced Mocha-R

**Available Colors:**  
**Brunettes:**  
Expresso  
Dark Chocolate  
Ginger Brown  
Medium Brown

**Hybrant Brunettes:**  
Coffee Latte-R  
Iced Mocha-R  
Maple Sugar-R

**Blonds:**  
Harvest Gold  
Spring Honey  
Gold Blond

**LR Brunettes:**  
Marble Brown-LR

**Hybrant Blonds:**  
Nutmeg-R  
Creamy Toffee-R

**LR Blonds:**  
Macadamia-LR

**Hybrant Reds:**  
Almond Spice-R



### Medium TP 731

An enhancer that provides extra volume and fullness.

**Base Construction:**  
Machine-made  
Hair Length: 8" (20.5 cm)  
Weight: 1.52 oz (43 g)

**Color Shown:**  
Gold Blond

**Available Colors:**  
**Brunettes:**  
Expresso  
Cappuccino  
Dark Chocolate  
Ginger Brown  
Medium Brown

**Hybrant Brunettes:**  
Coffee Latte-R  
Iced Mocha-R  
Maple Sugar-R

**LR Brunettes:**  
Marble Brown-LR

**Blonds:**  
Harvest Gold  
Spring Honey  
Gold Blond

**Hybrant Blonds:**  
Nutmeg-R  
Creamy Toffee-R

**Hybrant Reds:**  
Almond Spice-R

**Grays:**  
Silver Stone™



### New Addition 770

A great enhancer designed to provide extra volume or a fresh look.

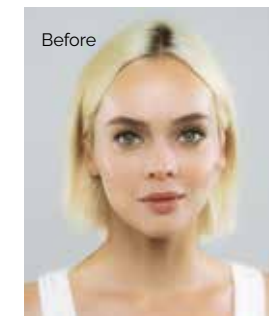
**Base Construction:**  
Machine-made  
Hair Length: 4" (10 cm)  
Crown: 4.5" (11.5 cm)  
Weight: 1 oz (28 g)

**Color Shown:**  
Creamy Toffee

**Available Colors:**  
**Brunettes:**  
Expresso  
Dark Chocolate  
Coffee Latte  
Ginger Brown  
Marble Brown  
Medium Brown  
Light Chocolate

**Blonds:**  
Harvest Gold  
Spring Honey  
Creamy Toffee  
Gold Blond

**Grays:**  
Silver Stone™  
60



### Evanna TP 771

One of our top-selling styles now available as a top piece! Gorgeous salon finish beach waves for a shaggy shoulder-length look.

**Base Construction:**  
Lace front + lace part  
Fringe: 11.5" (29.2 cm)  
Crown: 11.5" (29.2 cm)  
Weight: 2.08 oz (59 g)

**Color Shown:**  
Ice Blond

**Available Colors:**  
**Brunettes:**  
Dark Chocolate  
Ginger Brown  
Medium Brown

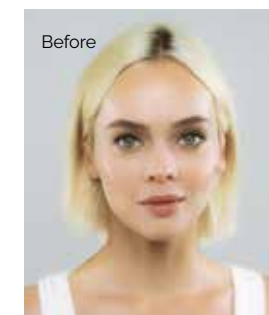
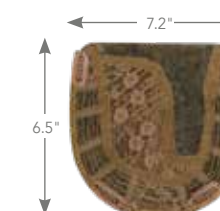
**LR Brunettes:**  
Marble Brown-LR

**Blonds:**  
Ice Blond

**Hybrant Blonds:**  
Rose Gold-R

**LR Blonds:**  
Mochaccino-LR  
Creamy Toffee-LR

**Grays:**  
Silver Stone™



### Modern TP 772

Flawless enhancer adding dimension and density to an everyday look.

**Base Construction:**  
Machine-made  
Fringe: 7.08" (18cm)  
Crown: 3.93 (10cm)  
Weight: 1.44oz (41g)

**Color Shown:**  
Champagne-R

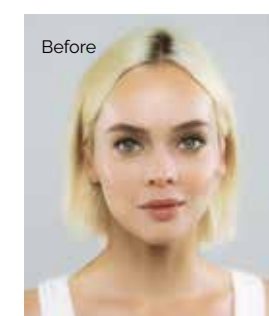
**Available Colors:**  
**Brunettes:**  
Dark Chocolate  
Ginger Brown  
Medium Brown

**Hybrant Brunettes:**  
Marble Brown-R  
Maple Sugar-R

**Blonds:**  
Harvest Gold  
Nutmeg-F  
Spring Honey

**Hybrant Blond:**  
Champagne-R  
Creamy Toffee-R

**Grays:**  
Silver Stone™  
60







# RENÉ of PARIS™

2022 HI-FASHION COLLECTION

Distributed by Aderans Hair Goods

9135 Independence Avenue Chatsworth, CA 91311 USA

Toll Free: 800.353.7363 | Fax: 818.885.0134 | reneofparis.com

FRONT COVER: Sage in Milk Tea-LR

BACK COVER: Tara in Marble Brown-R (left), Sage in Rose Gold-R (right)

FOLLOW US ON:



ROP HI-FASHION CATALOG 2022