



THE

ALEXANDER

*Couture Collection*

By RENÉ of PARIS™

COLLECTION 2021



*THE*  
**ALEXANDER**  
*Couture Collection*  
By RENÉ of PARIS™

**HIGH FASHION MEETS LIFESTYLE..**

With the successful launch of the Alexander Couture Collection, we are excited to introduce six new styles. Discover elegant, fashion forward looks with Zara, Bethany, Joslin, Alexandra, Becky and Astrid. The Alexander Couture Collection is designed to bring out the best version of you.

*Alexander Turnbull*



**NEW!**  
**BETHANY**  
1028  
Page 8-9



**NEW!**  
**ZARA**  
1029  
Page 10-11



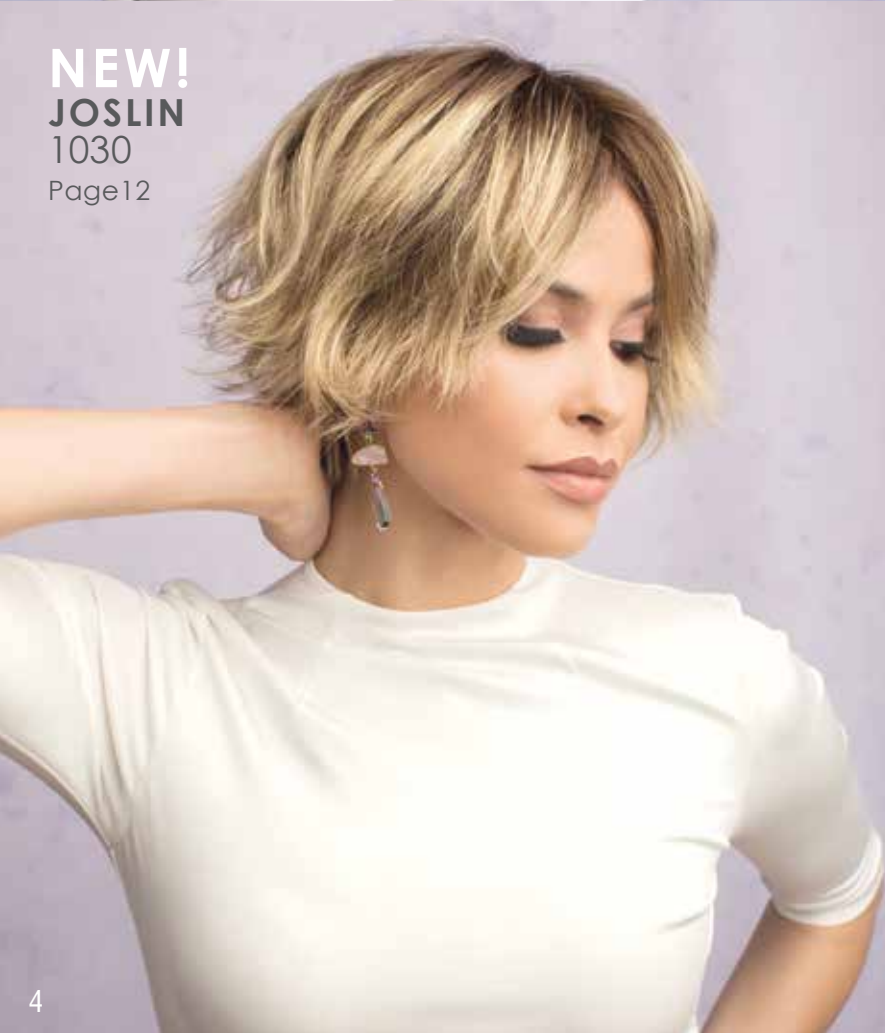
**NEW!**  
**ALEXANDRA**  
1027  
Page 15



**NEW!**  
**BECKY**  
1025  
Page 13



25  
**ANGELA** 1024



**NEW!**  
**JOSLIN**  
1030  
Page 12



16  
**JULIE** 1015



17  
**SUSANNE** 1016



18  
**GABBY** 1017



**NEW!**  
**ASTRID**  
1026  
Page 14



19  
**ANGIE** 1018



20  
**SAFI** 1019



21  
**VEE** 1020

## TABLE OF CONTENTS

Available Colors	6
New Styles	8-15
Available Styles	16-25
Accessories	26-27



22  
**SUE** 1021



23  
**LUCY** 1022



24  
**ALBEE** 1023

# AVAILABLE COLORS

## BRUNETTES

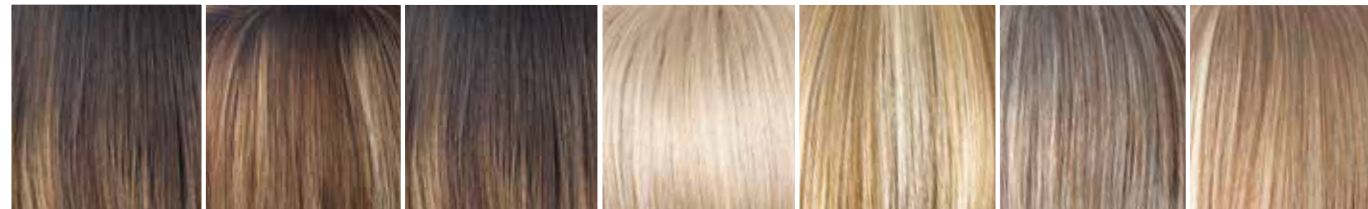


Coffee Latte Dark Chocolate Ginger Brown Marble Brown Chocolate Frost-R Coffee Latte-R Iced Mocha-R

## HYBRANT BRUNETTES

## LR BRUNETTES

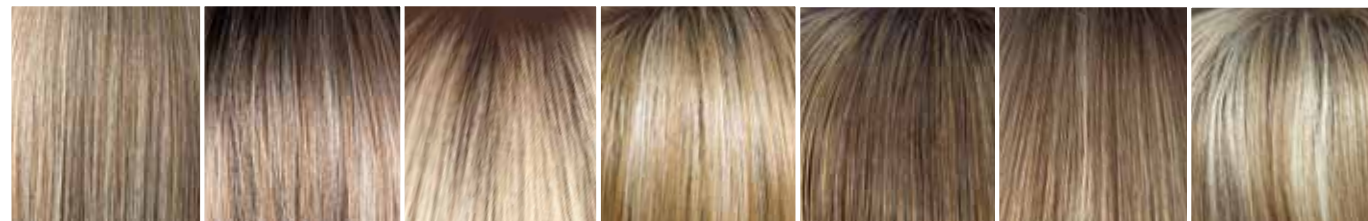
## BLONDS



Marble Brown-R Maple Sugar-R Marble Brown-LR Creamy Blond Creamy Toffee Frosti Blond Strawberry Swirl

## MELTED BLONDS

## HYBRANT BLONDS



Spring Honey Melted Marshmallow Champagne-R Creamy Toffee-R Mochaccino-R Spring Honey-R Sugar Cane-R

## LR BLONDS

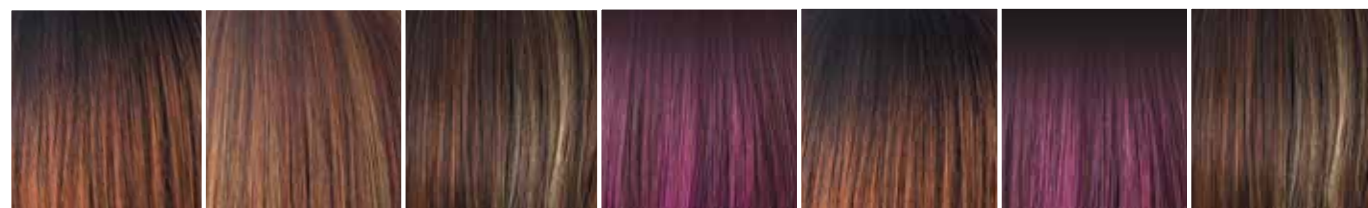
## REDS

## HYBRANT REDS



Nutmeg-F Cream Toffee-LR Macadamia-LR Mochaccino-LR Spring Honey-LR Raspberry Ice Auburn Sugar-R

## LR REDS



Crimson-R Irish Spice-R Raspberry Ice-R Plumberry Jam-R Crimson-LR Plumberry Jam-LR Raspberry Ice-LR

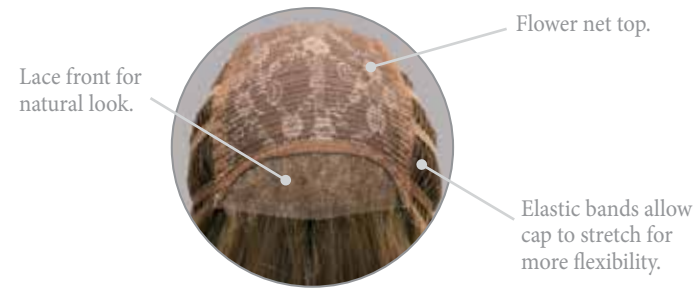
## GRAYS

## HYBRANT GRAYS



Silver Stone™ 60 Illumina-R Moonstone

## Lace Front



BETHANY 1028 JOSLIN 1030

## Lace Front/Lace Part



JULIE 1015 SAFI 1019 SUE 1021



ALEXANDRA 1027 ZARA 1029

## Monofilament

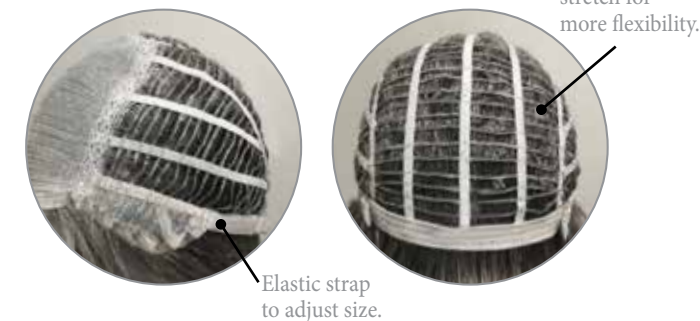


VEE 1020 LUCY 1022 ALBEE 1023



ANGELA 1024 BECKY 1025 ASTRID 1026

## Machine Made



SUSANNE 1016 GABBY 1017 ANGIE 1018

**NEW**



# BETHANY 1028

A voluminous brushed up pixie with a blowout texture. This style will give you a sleek and classy look.

**COLOR SHOWN:**  
Silver Stone™ (Left)  
Creamy Blond (Right)

Cap: Lace front  
Fringe: 5.91" (15 cm)  
Crown: 5.12" (13 cm)  
Nape: 1.58" (4 cm)  
Weight: 2.12-2.34 oz (62-67g)

**BRUNETTES:**  
Dark Chocolate  
Marble Brown

**BLONDS:**  
Creamy Blond  
Creamy Toffee  
Frosti Blond  
Spring Honey  
Strawberry Swirl

**HYBRANT BLONDS:**  
Champagne-R

**GRAYS:**  
Silver Stone™  
60

**NEW**



# ZARA 1029

Mid length wavy,  
super fashionable  
style.

**COLOR SHOWN:**

Coffee Latte (Left)  
Moonstone (Right)

Cap: Lace Front / Lace Part  
Fringe: 11.81" (30 cm)  
Crown: 11.81" (30 cm)  
Nape: 5.12" (13 cm)  
Weight: 4.66-5.01 oz (132-142g)

**BRUNETTES:**

Coffee Latte  
Dark Chocolate  
Ginger Brown

**LR BRUNETTES:**

Marble Brown-LR

**HYBRANT BLONDS:**

Champagne-R

**LR BLONDS:**

Creamy Toffee-LR  
Mochaccino-LR  
Spring Honey LR

**MELTED BLONDS:**

Melted Marshmallow

**REDS:**

Raspberry Ice

**HYBRANT REDS:**

Auburn Sugar-R  
Crimson-LR

**LR REDS:**

Plumerry Jam-LR  
Raspberry Ice- LR

**HYBRANT GRAYS:**

Moonstone

# JOSLIN 1030

Flirty and fun, Joslin is a layered textured must have.

**COLOR SHOWN:**  
Creamy Toffee-LR

Cap: Lace Front  
Fringe: 5.51" (14 cm)  
Crown: 6.29" (16 cm)  
Nape: 3.93" (10 cm)  
Weight: 3.13 oz (80-89 g)

**BRUNETTES:**  
Coffee Latte  
Dark Chocolate

**HYBRANT BRUNETTES:**  
Chocolate Frost-R  
Iced Mocha-R  
Maple Sugar-R

**LR BRUNETTES:**  
Marble Brown-LR

**BLONDS:**  
Creamy Blond

**HYBRANT BLONDS:**  
Champagne-R  
Sugar Cane-R  
Nutmeg-F

**LR BLONDS:**  
Creamy Toffee-LR

**HYBRANT REDS:**  
Crimson -R  
Irish Spice-R  
Razberry Ice-R

**GRAYS:**  
Silver Stone™

**NEW NEW**



# BECKY 1025

Very classy and elegant, this short layered style with gentle feminine flicks in the nape is both very wearable and soft.

**COLOR SHOWN:**  
Silver Stone™

Cap: Monofilament  
Fringe: 5.91" (15 cm)  
Crown: 7.87" (20 cm)  
Nape: 3.94" (10 cm)  
Weight: 3.2 oz (91 g)

**BRUNETTES:**  
Coffee Latte  
Dark Chocolate  
Ginger Brown

**HYBRANT BRUNETTES:**  
Iced Mocha-R  
Marble Brown-R

**BLONDS:**  
Creamy Blond

**HYBRANT BLONDS:**  
Champagne-R  
Creamy Toffee-R  
Mochaccino-R  
Nutmeg-F  
Spring Honey-R  
Sugar Cane-R

**HYBRANT REDS:**  
Auburn Sugar-R

**GRAYS:**  
Silver Stone™  
60

# ASTRID 1026

This look is effortlessly chic, sexy and versatile. A modern take on a classic shape and a cut as timeless as the bob deserves.

**COLOR SHOWN:**  
60

Cap: Monofilament  
Fringe: 3.15" (8 cm)  
Crown: 10.23" (26 cm)  
Nape: 4.72" (12 cm)  
Weight: 4.06 oz (115 g)

**BRUNETTES:**

Coffee Latte  
Dark Chocolate  
Ginger Brown  
Iced Mocha

**HYBRANT**

**BRUNETTES:**  
Chocolate Frost-R  
Marble Brown-R

**BLONDS:**

Creamy Blond

**HYBRANT BLONDS:**

Champagne-R  
Creamy Toffee-R  
Mochaccino-R  
Spring Honey-R  
Sugar Cane-R

**MELTED BLONDS:**

Melted Marshmallow

**LR REDS:**

Plumberry Jam-LR

**GRAYS:**

Silver Stone™  
60

**HYBRANT GRAYS:**

Illumina-R

**NEW NEW**



# ALEXANDRA 1027

A beautiful long piece with natural waves and a full fringe keeps this stunning new design a must have.

**COLOR SHOWN:**  
Champagne-R

Cap: Lace Front / Lace Part  
Fringe: 4.33" (11 cm)  
Crown: 16.54" (42 cm)  
Nape: 16.54" (42 cm)  
Weight: 5.33 oz (151g)

**BRUNETTES:**

Coffee Latte  
Dark Chocolate

**HYBRANT**

**BRUNETTES:**  
Iced Mocha-R

**LR BRUNETTES:**

Marble Brown-LR

**BLONDS:**

Creamy Blond

**HYBRANT BLONDS:**

Champagne-R

**LR BLONDS:**

Creamy Toffee-LR  
Mochaccino-LR  
Spring Honey-LR

**LR REDS:**

Plumberry Jam-LR  
Crimson-LR

**MELTED:**

Melted Plum

**HYBRANT GRAYS:**

Illumina-R





# JULIE 1015

Playful Lace-Front/Lace-Part bob with spiral curls.

**COLOR SHOWN:**

Melted Marshmallow (Top)  
Dark Chocolate (Bottom)

Cap: Lace Front / Lace Part  
Fringe: 9.44" (24 cm)  
Crown: 12.99" (33 cm)  
Nape: 5.51" (14 cm)  
Weight: 4.26 oz (121 g)

**BRUNETTES:**

Coffee Latte  
Dark Chocolate  
Ginger Brown

**HYBRANT BRUNETTES:**

Marble Brown-R

**HYBRANT BLONDS:**

Creamy Toffee-R  
Mochaccino-R  
Spring Honey-R

**LR BLONDS:**

Macadamia-LR

**MELTED:**

Melted Marshmallow

**REDS:**

Razberry Ice

**HYBRANT REDS:**

Plumberry Jam-R



# SUSANNE 1016

This classic cut has short layers with side swept fringe and tapered nape.

**COLOR SHOWN:**

Chocolate Frost-R

Cap: Machine Made  
Fringe: 5.51" - 7.08" (14-18 cm)  
Crown: 4.72" (12 cm)  
Nape: 2.36" (6 cm)  
Weight: 2.46 oz (70 g)

**BRUNETTES:**

Dark Chocolate

**HYBRANT BRUNETTES:**

Chocolate Frost-R  
Coffee Latte-R  
Iced Mocha-R  
Maple Sugar-R

**BLONDS:**

Creamy Blond

**HYBRANT BLONDS:**

Champagne-R  
Creamy Toffee-R  
Nutmeg-F

**HYBRANT REDS:**

Razberry Ice-R

**GRAYS:**

Silver Stone™





## GABBY 1017

Fashion forward pixie with tapered nape.

**COLOR SHOWN:**  
Champagne-R

Cap: Machine Made  
Fringe: 2.36" (6 cm)  
Crown: 4.33" (11 cm)  
Nape: 2.36" (6 cm)  
Weight: 2.04 oz (58 g)

**BRUNETTES:**  
Dark Chocolate  
Marble Brown

**BLONDS:**  
Creamy Blond  
Creamy Toffee  
Frosti Blond  
Strawberry Swirl  
Spring Honey

**HYBRANT BLONDS:**  
Champagne-R

**GRAYS:**  
Silver Stone™  
60

## ANGIE 1018

Sleek A-line cut with full fringe.

**COLOR SHOWN:**  
Maple Sugar-R

Cap: Machine Made  
Fringe: 3.93" (10 cm)  
Crown: 6.29" (16 cm)  
Nape: 1.57" (4 cm)  
Weight: 3.35 oz (95 g)

**BRUNETTES:**  
Dark Chocolate  
Coffee Latte

**HYBRANT  
BRUNETTES:**  
Chocolate Frost-R  
Iced Mocha-R  
Marble Brown-R  
Maple Sugar-R

**BLONDS:**  
Creamy Blond

**HYBRANT BLONDS:**  
Creamy Toffee-R  
Mochaccino-R  
Spring Honey-R

**LR BLONDS:**  
Macadamia-LR



# SAFI 1019

Salon inspired bob with beach waves.

**COLOR SHOWN:**  
Spring Honey-LR

Cap: Lace Front / Lace Part  
Fringe: 10.23" - 11.02" (26 cm - 28 cm)  
Crown: 9.84" (25 cm)  
Nape: 2.36" (6 cm)  
Weight: 3.52 oz (100 g)

**BRUNETTES:**

Coffee Latte  
Dark Chocolate  
Ginger Brown

**LR BRUNETTES:**

Marble Brown-LR

**HYBRANT REDS:**

Auburn Sugar-R

**MELTED BLONDS:**

Melted Marshmallow

**HYBRANT BLONDS:**

Champagne-R  
Creamy Toffee-R

**LR BLONDS:**

Mochaccino-LR  
Spring Honey-LR

**LR REDS:**

Razberry Ice-LR  
Plumerry Jam-LR



# VEE 1020

Runway inspired asymmetric cut with bouncy curls.

**COLOR SHOWN:**  
Champagne-R

Cap: Monofilament  
Fringe: 5.51" - 9.05" (14 cm - 23 cm)  
Crown: 7.48" (19 cm)  
Nape: 1.57" (4 cm)  
Weight: 2.64 oz (75 g)

**BRUNETTES:**

Dark Chocolate  
Coffee Latte

**HYBRANT BRUNETTES:**

Marble Brown-R

**HYBRANT GRAYS:**

Illumina-R

**LR REDS:**

Plumerry Jam-LR

**BLONDS:**

Creamy Blond

**HYBRANT BLONDS:**

Champagne-R  
Creamy Toffee-R  
Mochaccino-R  
Spring Honey-R

**LR BLONDS:**

Macadamia-LR





## SUE 1021

Classic Lace-Front/Lace-Part bob with fringe.

**COLOR SHOWN:**  
Mochaccino-R

Cap: Lace Front / Lace Part  
 Fringe: 3.54" (9 cm)  
 Crown: 9.05" (23 cm)  
 Nape: 1.57" (4 cm)  
 Weight: 2.89 oz (82 g)

**BRUNETTES:**  
 Coffee Latte  
 Dark Chocolate  
 Ginger Brown

**HYBRANT BRUNETTES:**  
 Chocolate Frost-R

**BLONDS:**  
 Creamy Blond

**LR BLONDS:**  
 Creamy Toffee-LR

**HYBRANT BLONDS:**  
 Champagne-R  
 Mochaccino-R  
 Spring Honey-R

**LR BRUNETTES:**  
 Marble Brown-LR

**LR REDS:**  
 Plumberry Jam-LR

**HYBRANT REDS:**  
 Razberry Ice-R

# LUCY 1022

Sleek medium length style with flipped ends.

**COLOR SHOWN:**  
 Marble Brown-R

Cap: Monofilament  
 Fringe: 5.51" (14 cm)  
 Crown: 11.02" (28 cm)  
 Nape: 8.26" (21 cm)  
 Weight: 5.36 oz (152 g)

**BRUNETTES:**  
 Coffee Latte  
 Dark Chocolate  
 Ginger Brown

**HYBRANT BRUNETTES:**  
 Marble Brown-R

**BLONDS:**  
 Creamy Blond

**HYBRANT BLONDS:**  
 Champagne-R  
 Creamy Toffee-R  
 Mochaccino-R  
 Spring Honey-R

**HYBRANT REDS:**  
 Irish Spice-R

**LR REDS:**  
 Plumberry Jam-LR



# ALBEE 1023

A classic short style with feathered layers.

**COLOR SHOWN:**  
Nutmeg-F

Cap: Monofilament  
Fringe: 3.54" (9 cm)  
Crown: 5.11" (13 cm)  
Nape: 2.36" (6 cm)  
Weight: 2.15 oz (61 g)

**BRUNETTES:**  
Coffee Latte  
Dark Chocolate

**HYBRANT BRUNETTES:**  
Chocolate Frost-R  
Iced Mocha-R  
Maple Sugar-R

**GRAYS:**  
Silver Stone™

**BLONDS:**  
Creamy Blond

**HYBRANT BLONDS:**  
Champagne-R  
Creamy Toffee-R  
Nutmeg-F  
Sugar Cane-R

**HYBRANT REDS:**  
Crimson-R  
Raspberry Ice-R



# ANGELA 1024

Flirty long layers with wispy fringe.

**COLOR SHOWN:**  
Plumberry Jam-LR

Cap: Monofilament  
Fringe: 3.93"- 4.72" (10 cm - 12 cm)  
Crown: 14.96" (38 cm)  
Nape: 11.81" (30 cm)  
Weight: 5.39 oz (153 g)

**BRUNETTES:**  
Coffee Latte  
Dark Chocolate

**HYBRANT BRUNETTES:**  
Iced Mocha-R  
Marble Brown-R

**BLONDS:**  
Creamy Blond

**HYBRANT BLONDS:**  
Champagne-R  
Creamy Toffee-R  
Mochaccino-R  
Spring Honey-R

**LR REDS:**  
Plumberry Jam-LR



# ACCESSORIES



8128 18" WHITE MANNEQUIN no logo  
 8129 18" GRAY MANNEQUIN with logo  
 8130 18" BLACK MANNEQUIN with logo  
 8131 18" WHITE MANNEQUIN with logo



8119 17" MANNEQUIN  
 8123 21" MANNEQUIN



9580 WIG CAP  
 Available Colors: Beige, Black, and Brown



9587 ROP WIG LIFT COMB



9591 ROP FOLDING BRUSH



965 WIRE BRUSH



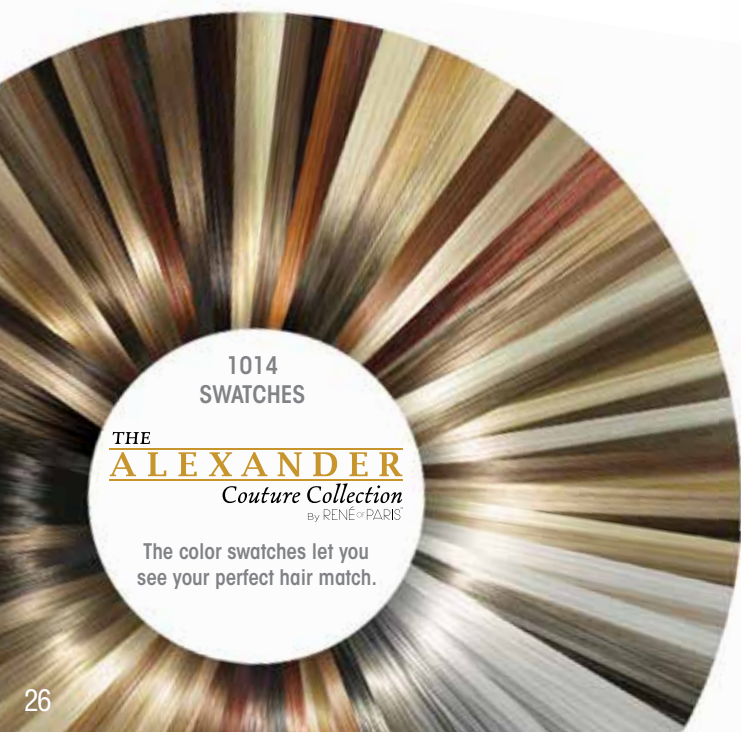
9561 RENE OF PARIS FLAT IRON



9581 WIG LINER Open Mesh  
 Available Colors: Beige, Black, and Brown



8113 MANNEQUIN HOOK



1014 SWATCHES

THE ALEXANDER Couture Collection by RENÉ OF PARIS

The color swatches let you see your perfect hair match.



Convenient "snap together" stand for wig storage or service.

9582 WIG STAND PACKAGE

3pc package contains colors: Black, Blue & Gray

Sold separately: 9583 BLACK, BLUE, GRAY

# RENÉ OF PARIS™

## MAINTENANCE TOOLS

### René of Paris Prepare Shampoo

This luxurious shampoo is formulated with the ultimate in moisture replenishing cleansers. René of Paris Prepare Shampoo helps maintain the smoothness, strength and polish of your wig/hairpiece.

The gentle combination of plant and vegetable extracts, along with natural essential oils and vitamins, provides a gentle but thorough cleansing of your wig/hairpiece. The results will revolutionize how you feel.

### René of Paris Dual Conditioner

René of Paris Conditioner for synthetic wigs revitalizes dull hair leaving it softer, shinier and easy to manage.

### René of Paris Revive Liquid Enhancement

The finest advanced liquid developed for synthetic fiber hair. René of Paris Revive Liquid Enhancement will revive your wig/hair piece and give it the brand new feel.

Not only helps eliminate frizz while adding luster, texture and volume, but also protects your wig/hairpiece from the daily stresses.

### René of Paris Protect Holding Spray

The final stop in maintaining and styling your wig/hairpiece. This holding spray adds shine while gently, yet firmly, holding your desired style.



ROP Prepare Shampoo 9950 | 8 oz. 9954 | 2 oz.  
 ROP Light Conditioner 9953 | 8 oz. 9955 | 2 oz.  
 ROP Protect Holding Spray 9952 | 8 oz. 9956 | 2 oz.  
 ROP Revive Liquid Enhancement 9951 | 8 oz.

We are delighted that you have chosen to become one of our valued customers. We appreciate your business as well as any inquiries regarding the following:

#### APPLICABILITY:

1. The following terms and conditions ("Terms") are the only terms which govern the sale of the goods ("Goods") by Aderans Hair Goods, Inc. ("AHG") to its customers (each referred to hereafter as "Buyer," or "You"). Notwithstanding anything herein to the contrary, if a written contract signed by both parties is in existence covering the sale of the Goods covered hereby, the terms and conditions of said contract shall prevail to the extent they are inconsistent with these Terms.

2. These Terms, together with the applicable invoice and the Statement of Policy defined below (collectively, this "Agreement"), comprise the entire agreement between the parties, and supersede all prior or contemporaneous understandings, agreements, negotiations, representations and warranties, and communications, both written and oral. These Terms prevail over any of Buyer's general terms and conditions of purchase regardless whether or when Buyer has submitted its purchase order or such terms. Acceptance of Buyer's purchase order or fulfillment of Buyer's order does not constitute acceptance of any of Buyer's terms and conditions and does not serve to modify or amend these Terms.

**ACCEPTANCE OF PURCHASE ORDER.** AHG has the right, in its sole discretion, to accept or reject any purchase order issued by You. AHG may accept any purchase order by confirming the order (whether by written confirmation, invoice or otherwise) or by delivering the Goods, whichever occurs first. No purchase order is binding on AHG unless accepted by AHG.

**PRICES.** You shall purchase the Goods from AHG at the prices set forth in AHG's price list in effect at the time that AHG accepts Your purchase order ("Prices"). Prices are exclusive of, and You are solely responsible for, and shall pay, any and all taxes, with respect to, or measured by, the manufacture, sale, shipment, use or Price of the Goods; provided, however, that You shall not be responsible for any taxes imposed on, or with respect to, AHG's income, revenues, gross receipts, personnel or real or personal property or other assets.

**PAYMENT TERMS:** AHG accepts payment by Visa, MasterCard, AMEX, Discover, money order, wire transfer and COD. Upon approval, credit terms may be available.

**CREDIT PURCHASES:** If You wish to apply for an AHG 30-day open account (NET -30), contact Your AHG sales representative and request a credit application.

**SHIPPING/HANDLING:** You will pay for all shipping charges and insurance costs. AHG offers shipping via UPS next day air, 2-3 day air, and ground. There is a handling charge of \$1.00 for all orders. For each purchase order accepted by AHG, AHG may, in its sole discretion, without liability or penalty, make partial shipments of Goods to You. Each shipment will constitute a separate sale and You will pay for the units shipped whether such shipment is in whole or partial fulfillment of a purchase order.

**TRANSFER OF TITLE & RISK OF LOSS:** Title passes to You upon delivery of the Goods

to the address You specified in the purchase order. Risk of loss or damage to the Goods passes to You upon AHG's tender of such units to the carrier at AHG's location in Chatsworth, CA.

**STATEMENT OF POLICY:** You must comply with the Statement of Policy and Guidelines for Using Aderans' Trademarks and Copyrights (the "Statement of Policy") which was provided to You and which may be modified or updated by AHG from time to time in its sole discretion.

**RETURN POLICY:** Returns will not be accepted unless pre-authorized by (AHG). Requests must be made within 30 days from receipt of Goods. Upon approval and receipt of the authorization for return label, Goods meeting the following conditions may be returned for an exchange or direct credit to Your account (freight prepaid by Buyer). NO cash refunds! If an item is to be exchanged, new shipping and handling charges will be added.

1. A copy of Your invoice must accompany all returns. The authorization for return label must be placed on the outside of the box (complete with the authorization number) and Your return address. If not, the box will be refused.
2. Returned Goods must be in MINT CONDITION. Mint condition is defined by AHG as: no missing tags or labels, the hair net is not removed, item(s) are not combed/fluffed or tried on by a customer. All returns must be in original shipping box. There is a restocking fee of \$10.00 for EACH piece returned.
3. AHG has carefully designed its product packaging to protect the product integrity. AHG is not responsible for damage to or problems with any product where the product and/or shipment packaging has been changed per Your request. No returns will be accepted under these conditions.
4. Shipping and handling fees are non-refundable.
5. Any DISCONTINUED items are not returnable.
6. AHG is not responsible for lost return packages.

It is recommended that You keep proper Proof-of-Delivery. Goods not meeting the above stipulations will be refused. AHG will not accept returns more than 30 days after receipt of Goods. If there is a factory defect or an incorrectly shipped item due to our error, a full exchange or credit will be applied directly to Your account. Note: If an item is returned for a "defective" credit and upon examination found not to be defective, credit will only be given for the item's original price (providing it still meets the above standards), and a \$10.00 restocking charge will be applied. Any additional product not authorized for return will be sent back.

**NOTE:** Colors shown in this catalog may not reflect actual color of product. RENÉ OF PARIS is a trademark or registered trademark of Aderans Hair Goods, Inc. and/or Aderans Co., Ltd. in the United States and other countries.

CHRISTINE HEADWEAR and the Christine Headwear logo are trademarks and/or registered trademarks of The Headwear Company in the United States and other countries.

THE  
**ALEXANDER**

*Couture Collection*  
By RENÉ of PARIS™



2021 THE ALEXANDER COUTURE  
COLLECTON BY RENE OF PARIS™

Distributed by Aderans Hair Goods  
9135 Independence Avenue  
Chatsworth, CA 91311 USA  
Toll Free: 800.353.7363  
Fax: 818.885.0134

FRONT COVER: ZARA IN CREAMY TOFFEE-LR  
BACK COVER: ALEXANDRA IN CRIMSON-LR

[www.reneofparis.com](http://www.reneofparis.com)

FOLLOW US ON:



THE ALEXANDER COUTURE COLLECTION  
BY RENE OF PARIS™ 2021



2110745