

TEMPORARY ATTACHMENT – DAILY SOLUTION

STEP BY STEP: SEW IN CLIPS

The hair system is only temporarily attached to the remaining hair by a temporary clip fixation. The clips can always be attached where the hair situation is intact. Long-term stress on the hair is avoided by regularly removing the hair system. Temporary clip attachment is the simplest form of attachment and can be applied to a variety of fabric bases.

If you still have questions or if you are stuck at a step, you can reach us during our business hours at +49 2241 25527-17.

Tip

If you move the clip regularly, your own hair structure remains undamaged and stressed areas can recover.

1.



2.



3.



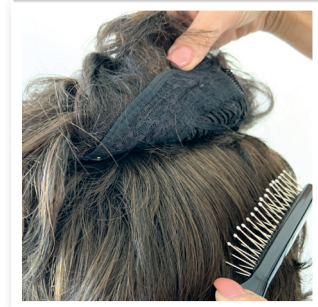
4.



6.



5.



7.



Use products

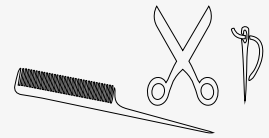


TOUPEE CLIP LARGE
700715 – 700717, 700729

TOUPEE CLIP SMALL
700710 – 700712



Additional materials required:



Steps 1-7

1.

The correct attachment enables the respective an optimal function for respective clips. The silicone web always points inwards.

2.

The clip is carefully sewn onto the base using the existing holes. The number of clips sewn in depends on the size and shape of the base. It is important to ensure that the clips are sewn on where the base could protrude.

3.

The clip opens by fixing the edges and pressing lightly on the center.

4.

Slightly tapping the hair in the fixing area of the clip increases the grip in your own hair.

5.

The hairpiece is placed on the head at the desired location. The hair piece is fixed by folding up the outfit and inserting the open clips into your own hair.

6.

The locking mechanism is activated by lightly pressing on the outside of the clip. A slight click can be heard. The hair piece is also fixed to the hair by the processed silicone band.

7.

The hairpiece can then be integrated into the hair situation.