

# TEMPORARY ATTACHMENT – DAILY SOLUTION

## STEP BY STEP: QUICK TOUCH

The hair system is temporarily attached or fixed to the remaining hair by a temporary attachment. Touch parts can be used to secure hairpieces that do not require strong fixation. The touch fixations can always be attached where the hair situation is intact. Temporary attachment is the simplest form of attachment.

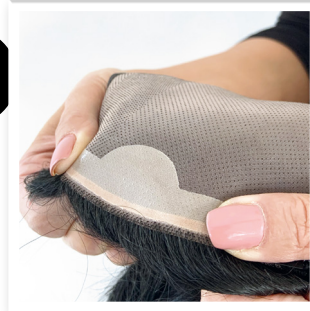
If you still have questions or if you are stuck at a step, you can reach us during our business hours at +49 2241 25527-17.



**Tip**

Carefully remove the touch attachment from your own hair.

**1.**



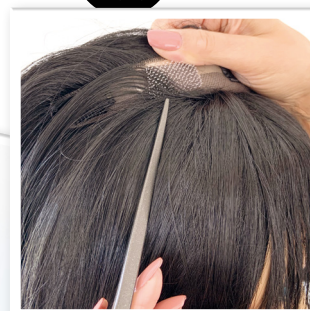
**2.**



**3.**



**6.**



**5.**



**4.**

**Tip**  
With the help of Aderans Purify, the adhesive bond can be easily removed.

**7.**



**Use products**

**QUICK TOUCH**  
700745



**Additional materials required:**



### Steps 1-7

**1.**

Gluing makes sense wherever a base contains PU coating or sewing would lead to damage.

**2.**

By loosening the white protective film on one half, the existing adhesive is exposed.

**3.**

The Quick Touch fixation is attached to the desired location on the hair piece with strong pressure. The second half of the white protective film is removed and firmly pressed again.

**4.**

The number of glued fixations depends on the size and shape of the base. It is important to ensure that the fixations are attached where the base could protrude or slip.

**5.**

The light touching of the hair in the fixing area of the attachment increases the grip in your own hair.

**6.**

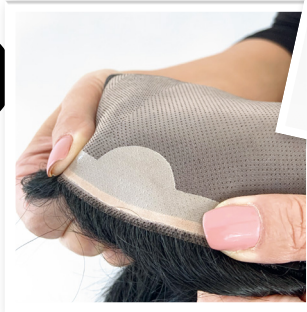
The hairpiece is placed on the head at the desired location.

**7.**

Slight rotational movements fix the attachment of the touch fixations.

# QUICK ALPHA – FOR MORE GRIP WITH ADDITIONAL SLIDING MECHANISM

1.



2.



3.



4.



5.



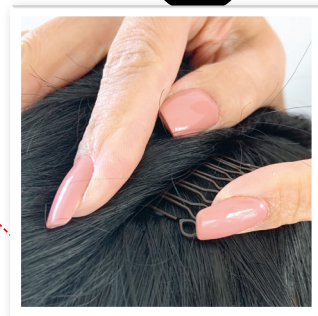
6.



7.



8.



## Steps 1-8

1.

Gluing makes sense wherever a base contains PU coating or sewing would lead to damage.

2.

With the Quick Alpha, the sliding mechanism of the comb is used for higher fixation. By pulling out the comb, the touch combs are exposed.

3.

By loosening the white protective film on one half, the existing adhesive is exposed.

4.

The touch fixation is attached to the desired location on the hair piece with strong pressure. The second half of the white protective film is removed and firmly pressed again.

5.

The number of glued fixations depends on the size and shape of the base. It is important to ensure that the fixations are attached where the base could protrude or slip.

6.

The light touching of the hair in the fixing area of the attachment increases the grip in your own hair.

7.

The hairpiece is placed on the head at the desired location. Slight rotational movements fix the attachment of the touch fixations.

8.

With the Quick Alpha, pushing the comb in increases the hold.

## Use products

QUICK ALPHA  
700746



Additional materials required:



**Tip**

With the help of Aderans Purify, the adhesive bond can be easily removed.

**Tip**

Carefully remove the touch attachment from your own hair.

**Aderans**  
GERMANY